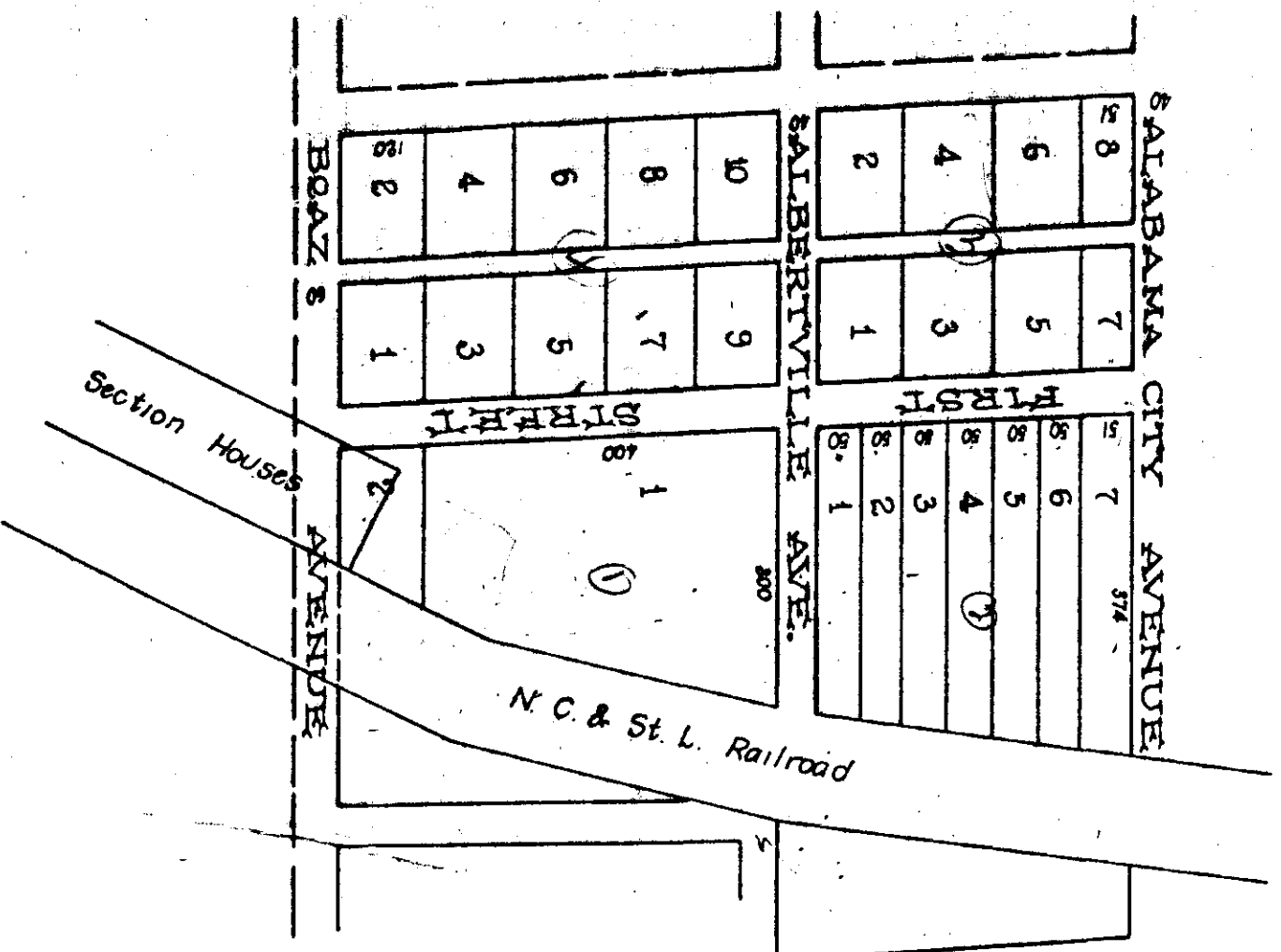
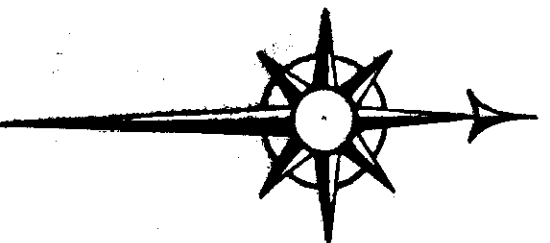


HENDERSON ADDITION TO CARLISLE CITY

ALL LOTS NOT OTHERWISE SPECIFIED ARE 100'x140'-
I. J. Lisenby, C.E.



I. D. G. Henderson, as agent for Carlisle Estate hereby ratify
and adopt the above plat of survey made by I. J. Lisenby, C.E.
6/17/1900

D. G. Henderson
Agent

Filed in office for record on the 17 day of June, A. D. 1901
at 9 o'clock A. M. and recorded the 17 day of June, 1901.
J. H. Lovejoy
Judge of Probate