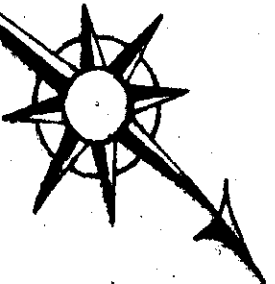


# ORIGINAL SURVEY OF ATTALLA

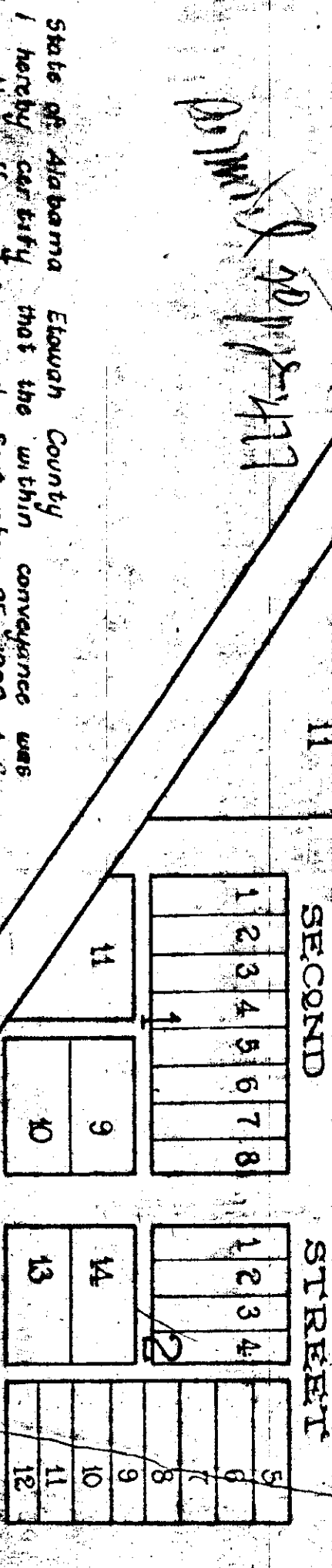
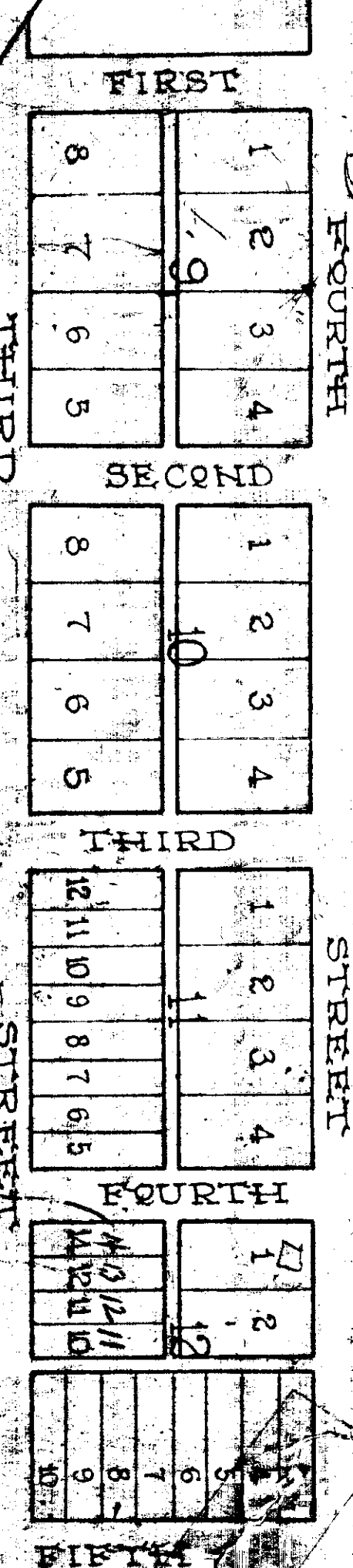
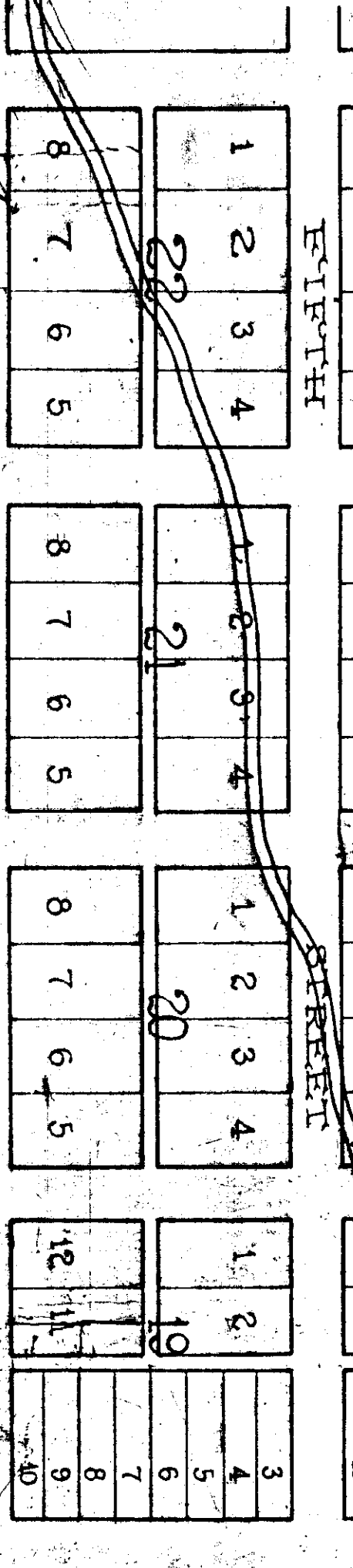
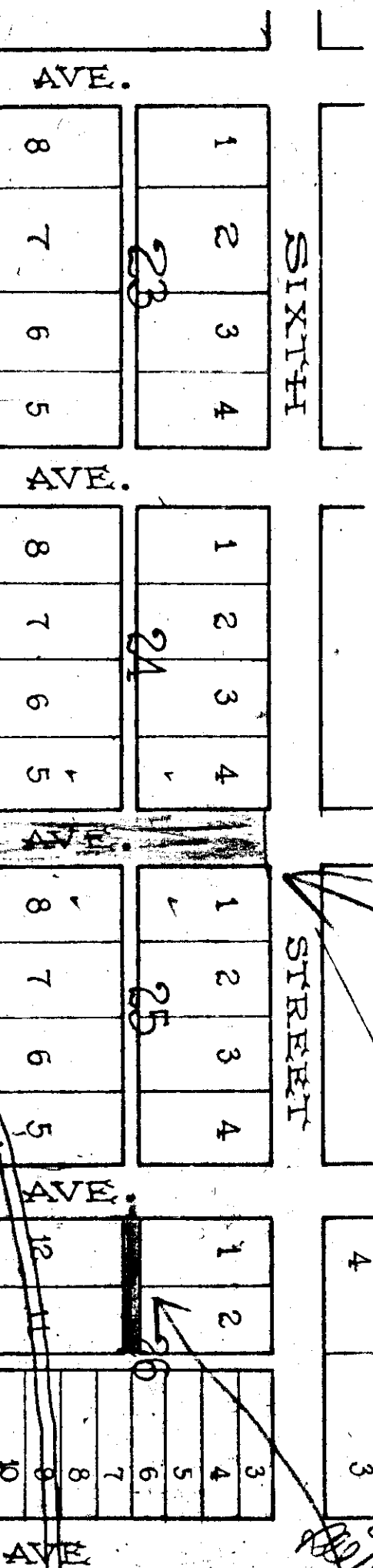


Small's Map 82-84-603

SEE PAGE 227

*See Small's Map 82-84-603*

*Small's Map 82-84-603*



Continued on next page

The State of Alabama Etowah County  
 I hereby certify that the within conveyance was  
 filed in this office for record September 25 1900 at 2  
 o'clock P.M. and recorded in Town Plat Book 4  
 page 226 and returned  
 U. H. Lovejoy, Judge of Probate

I hereby certify that this is the Original Map  
 of the Original Survey of Attalla  
 M. E. Mc Berrie

*Small's Map 82-84-603*