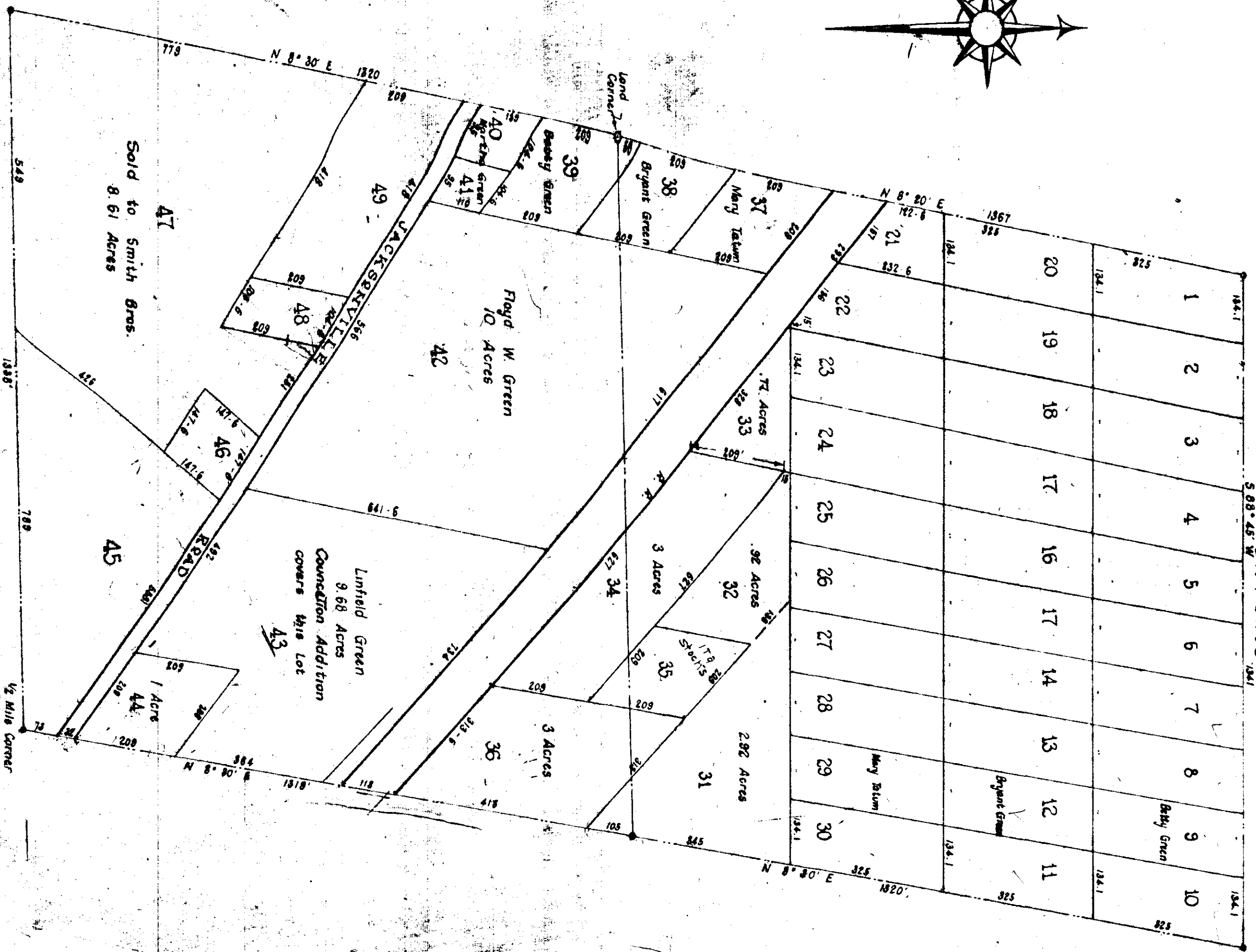
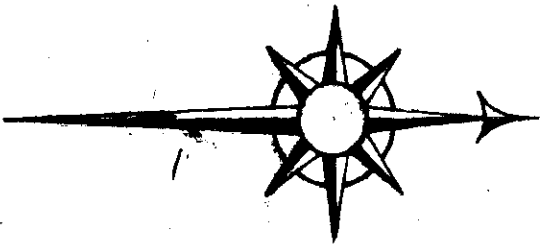


# MRS. MARTHA GREEN PLAT



Map of E 1/2 of NE 1/4 of Section 14 T. 12 R. 6 E  
 that above plat is correct as surveyed by me. This  
 December 10, 1880  
 T. W. Lister, County Surveyor

State of Alabama  
 Etowah County  
 I hereby certify and adopt the within  
 plat made by T. W. Lister, surveyor as correct,  
 of December, 1880.  
 Martha M. Green