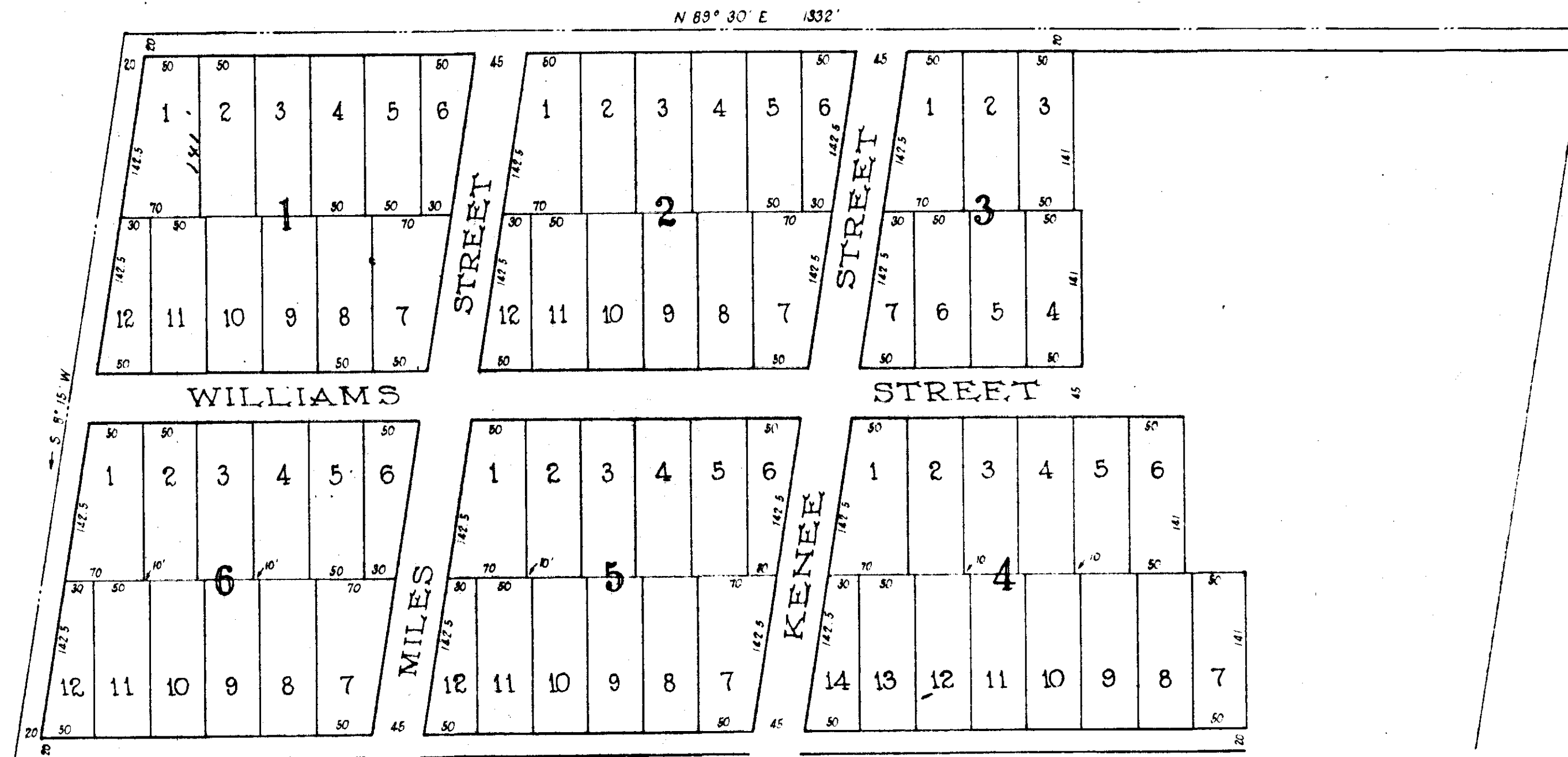
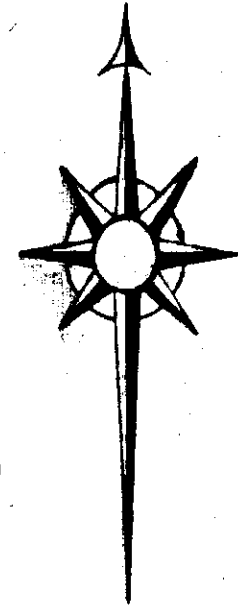


NORRIS ADDITION

ALABAMA CITY, ALA.
 N 1/2 OF FRAC. 1 SEC. 7 Tp 12 R 6 E
 20 ACRES MORE OR LESS
 SURVEYED BY T. W. LISTER, C.E.

- VACATED -
 SEE PAGE 261



Filed in office for record
 on the 14 day of February,
 A. D. 1903 at 4 o'clock P. M.
 and recorded the 20 day
 of February A. D. 1903.
 J. H. Lovejoy
 Judge of Probate