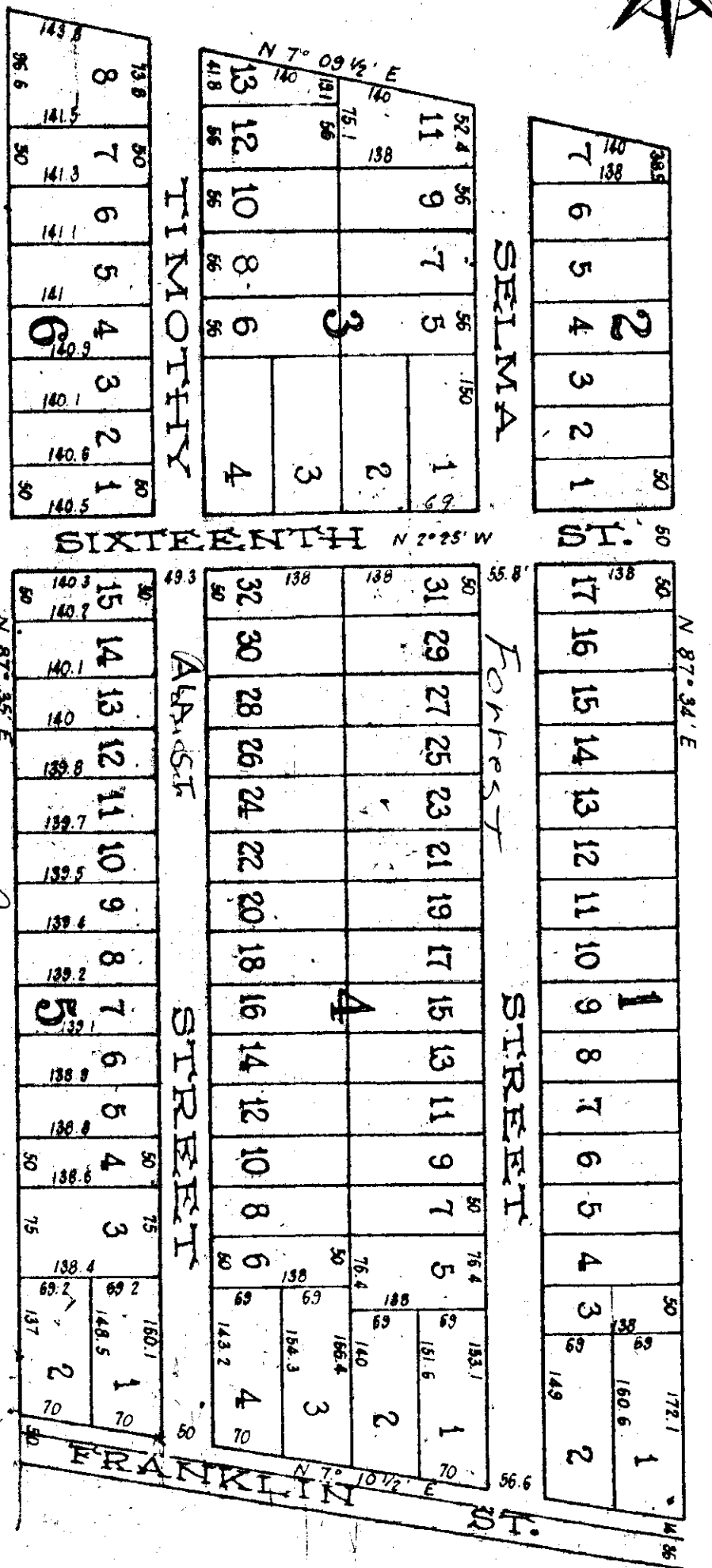
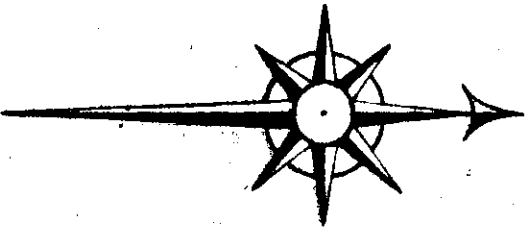


# W. A. CROCHERON

SECOND ADDITION TO GADSDEN, ALABAMA  
 BEING THE SW<sup>1</sup>/<sub>4</sub> OF SE<sup>1</sup>/<sub>4</sub> - NW<sup>1</sup>/<sub>4</sub> OF  
 SECTION 5 TP 12 RANGE 6 EAST  
 ARRANGED AND PLATTED BY  
 P. S. FITZGERALD, C. E.



The State of Alabama, Etowah County  
 I, P. S. Fitzgerald, Surveyor hereby certify that this plat is a  
 correct plat of the property above, as surveyed subdivided and  
 platted by me for record. This 9th day of May, 1889.  
 P. S. Fitzgerald  
 Surveyor.

The State of Alabama, Etowah County  
 W. A. Crocheron, owner of the lands hereon described  
 hereby adopt and ratify the same as correct. This 9th day  
 of May, 1889.  
 W. A. Crocheron

The State of Alabama, Etowah County  
 I, J. A. Tallman, Judge of Probate, hereby certify that  
 W. A. Crocheron whose name is signed to the foregoing declar-  
 ation and who is known to me, acknowledged before me on this  
 day that being informed of the contents of the conveyance he  
 signed the same voluntarily on the day the same bears date.  
 Given under my hand this May 7th, 1889.  
 J. A. Tallman  
 Judge of Probate

Filed in office for record on the 8th day of May 1889,  
 and duly recorded and examined May 24, 1889.  
 J. A. Tallman  
 Judge of Probate