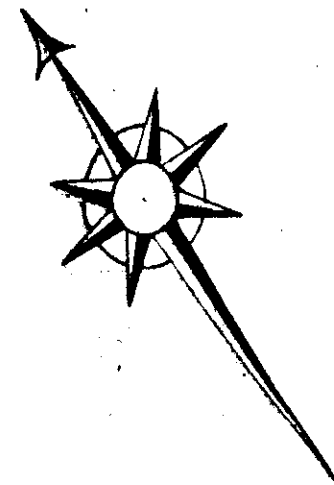
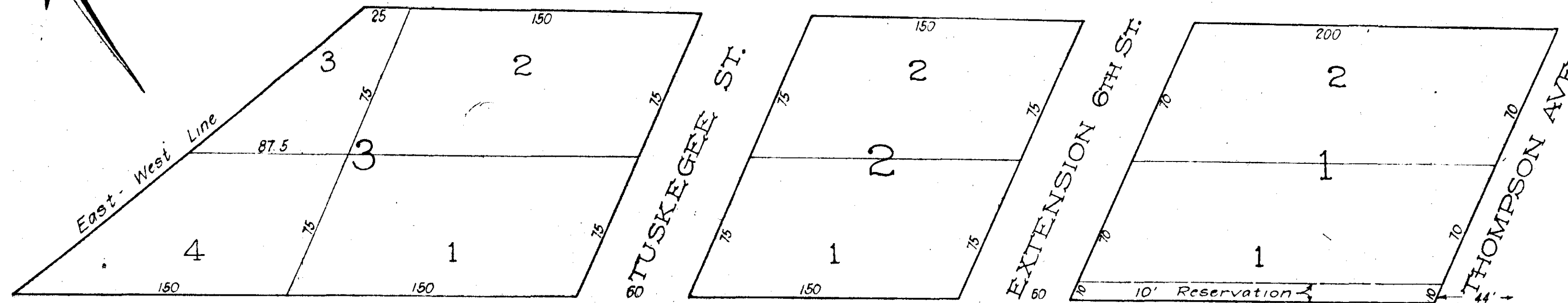


WATKINS AND PRIDMORE
ATTALLA, ALA.



SECTION 34 T 11 R 5 E



State of Alabama
Etowah County

We hereby approve, ratify, and adopt the above
plat or survey as made by Thomas Anderson, Civil
Engineer and acknowledge the same as being our lands
as above surveyed.

Given under our hands May 27, 1887.

T. J. Watkins
J. M. Pridmore

I certify that the above map is correct of
Watkins & Pridmore's Addition to Attalla by survey
made by me this 21st day of May, 1887.

Thos. Anderson, C.E. & Surveyor

Filed for record this 20th day of July, 1887.

J. E. Hamlin, Judge of Probate

Recorded April 24th, 1888.

J. A. Tallman, Judge of Probate