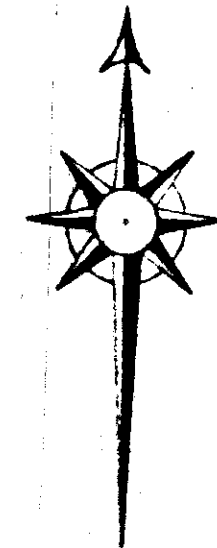
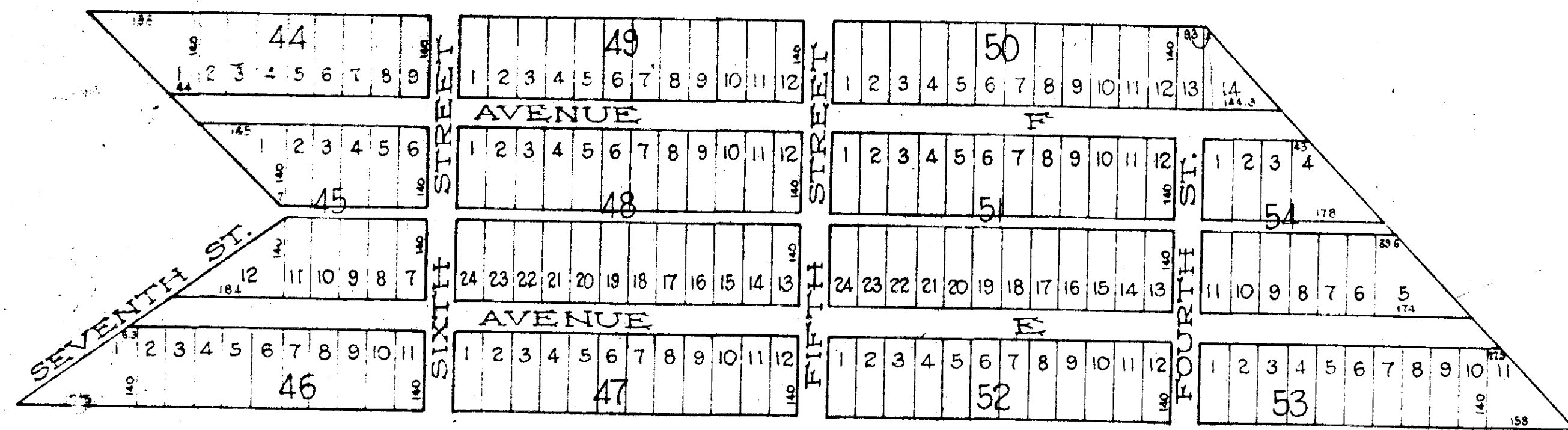


PART OF THE THORNTON TRACT

*Property of The Gadsden Land & Improvement Company
Gadsden, Alabama*



State of Alabama, Etowah County
I, R B Kyle, as president of the Gadsden Land & Improvement Co. hereby ratify and adopt the above plat of Survey made by the said J C Wright, C.E.

R B Kyle

State of Alabama, Etowah County
I, J C Wright, Surveyor, hereby certify that the foregoing map or plat is a true and correct map or plat of the property as surveyed by me February 23, 1888

J C Wright, C E

State of Alabama, Etowah County
I, J A Tallman, Judge of Probate, in and for said county hereby certify that the foregoing plat was filed in my office for record and duly recorded February 23, 1888.

J A Tallman, Judge of Probate