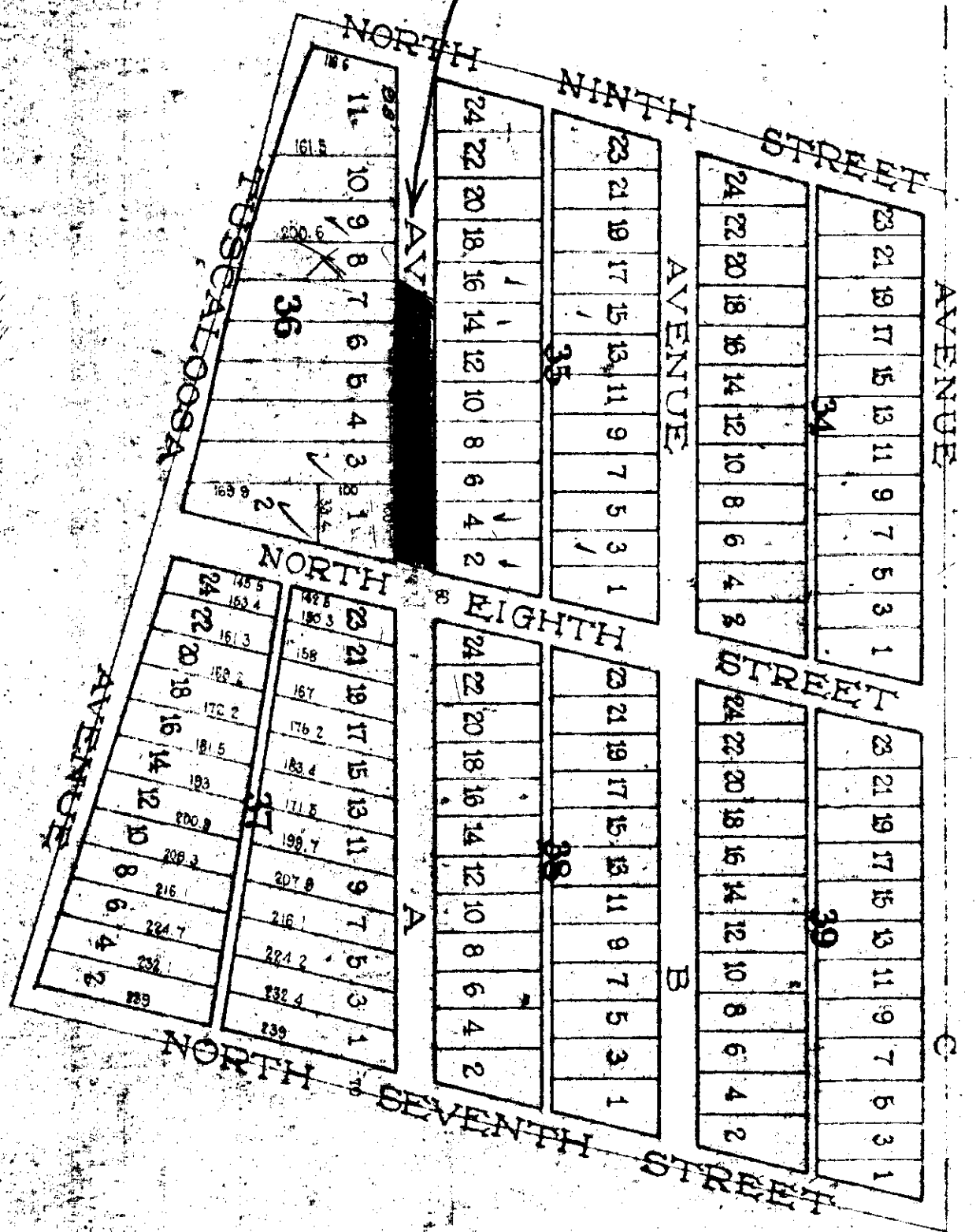


Annulled-
See - 389-472
See Plat B" 334-335



FOR CERTIFICATES FOR THIS PLAT SEE PAGE 31

NOTE: WHERE DIMENSIONS ARE NOT GIVEN CORNER LOTS ARE 50.0 FEET WIDE AT ONE END AND 37.5 FEET AT OTHER OTHER LOTS 50 FEET WIDE AL- SO WHERE DIMENSIONS ARE NOT GIVEN LOTS ARE 140 FEET DEEP. STREETS ARE 50 FEET WIDE EX- CEPT NORTH SEVENTH FROM AVENUE C TO TUSCALOOSA AVENUE WHICH IS INTENDED TO BE 70 FEET WIDE. AVENUES ARE 50 FEET EXCEPT TUSCALOOSA AVENUE WHICH IS IRREGULAR IN WIDTH ALLEYS ARE 12 FEET WIDE. THE LINES OF THE GOVERNMENT SURVEY DOTTED RED; AND THE BOUNDARY LINE OF THE TRACT IN RED.