

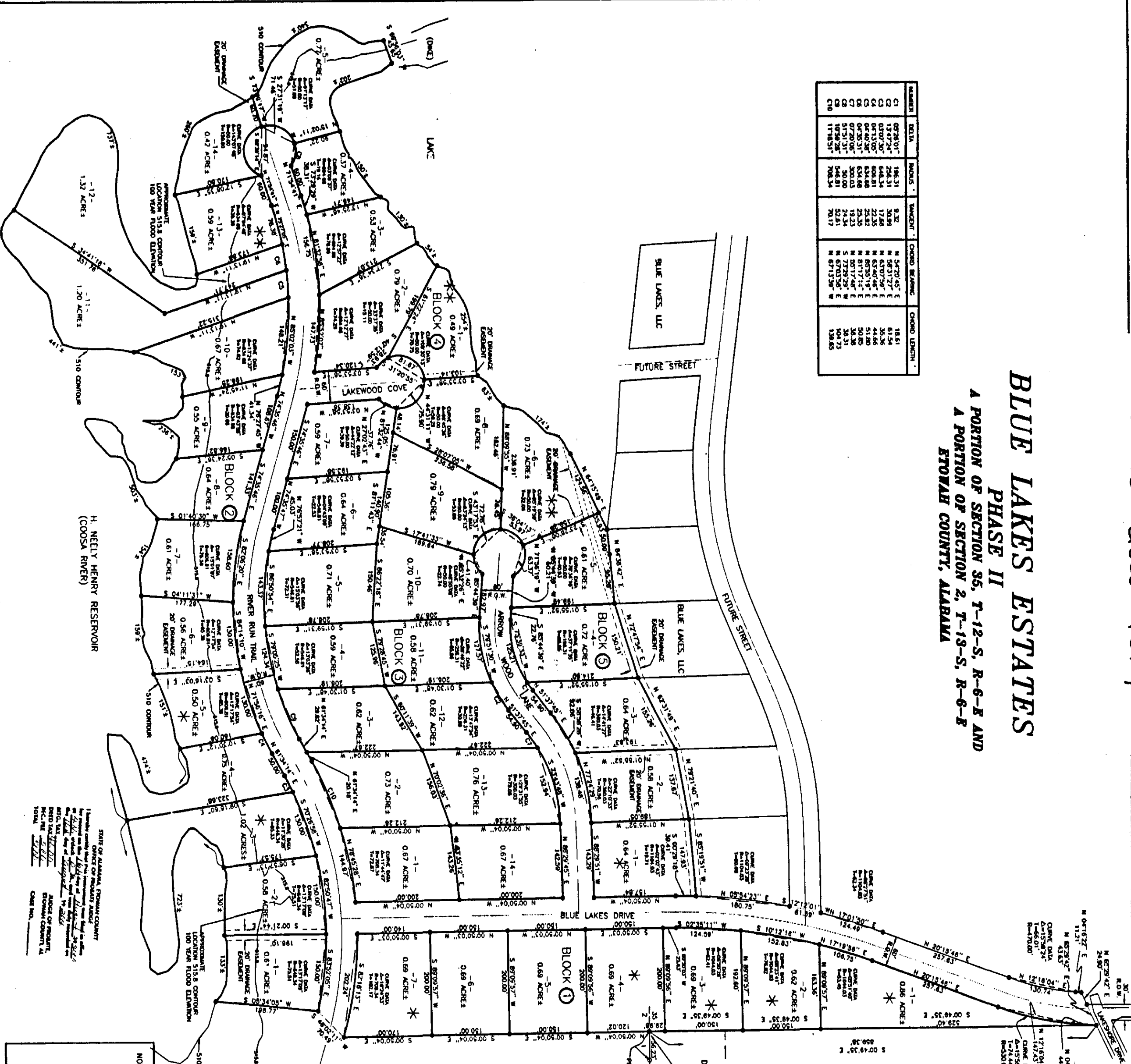
Declaration of Covenants,
Conditions and Restrictions

See Doc #

Misc-2000-4617

BLUE LAKES ESTATES
PHASE II
A PORTION OF SECTION 36, T-12-S, R-6-E AND
A PORTION OF SECTION 2, T-13-S, R-6-E
ETOWAH COUNTY, ALABAMA

PARCEL	AREA	ACRES	SECTION	OWNER	STATUS
1	0.07	0.07	36	Blue Lakes, LLC	Residential
2	0.07	0.07	36	Blue Lakes, LLC	Residential
3	0.07	0.07	36	Blue Lakes, LLC	Residential
4	0.07	0.07	36	Blue Lakes, LLC	Residential
5	0.07	0.07	36	Blue Lakes, LLC	Residential
6	0.07	0.07	36	Blue Lakes, LLC	Residential
7	0.07	0.07	36	Blue Lakes, LLC	Residential
8	0.07	0.07	36	Blue Lakes, LLC	Residential
9	0.07	0.07	36	Blue Lakes, LLC	Residential
10	0.07	0.07	36	Blue Lakes, LLC	Residential
11	0.07	0.07	36	Blue Lakes, LLC	Residential
12	0.07	0.07	36	Blue Lakes, LLC	Residential
13	0.07	0.07	36	Blue Lakes, LLC	Residential
14	0.07	0.07	36	Blue Lakes, LLC	Residential
15	0.07	0.07	36	Blue Lakes, LLC	Residential
16	0.07	0.07	36	Blue Lakes, LLC	Residential
17	0.07	0.07	36	Blue Lakes, LLC	Residential
18	0.07	0.07	36	Blue Lakes, LLC	Residential
19	0.07	0.07	36	Blue Lakes, LLC	Residential
20	0.07	0.07	36	Blue Lakes, LLC	Residential
21	0.07	0.07	36	Blue Lakes, LLC	Residential
22	0.07	0.07	36	Blue Lakes, LLC	Residential
23	0.07	0.07	36	Blue Lakes, LLC	Residential
24	0.07	0.07	36	Blue Lakes, LLC	Residential
25	0.07	0.07	36	Blue Lakes, LLC	Residential
26	0.07	0.07	36	Blue Lakes, LLC	Residential
27	0.07	0.07	36	Blue Lakes, LLC	Residential
28	0.07	0.07	36	Blue Lakes, LLC	Residential
29	0.07	0.07	36	Blue Lakes, LLC	Residential
30	0.07	0.07	36	Blue Lakes, LLC	Residential
31	0.07	0.07	36	Blue Lakes, LLC	Residential
32	0.07	0.07	36	Blue Lakes, LLC	Residential
33	0.07	0.07	36	Blue Lakes, LLC	Residential
34	0.07	0.07	36	Blue Lakes, LLC	Residential
35	0.07	0.07	36	Blue Lakes, LLC	Residential
36	0.07	0.07	36	Blue Lakes, LLC	Residential
37	0.07	0.07	36	Blue Lakes, LLC	Residential
38	0.07	0.07	36	Blue Lakes, LLC	Residential
39	0.07	0.07	36	Blue Lakes, LLC	Residential
40	0.07	0.07	36	Blue Lakes, LLC	Residential
41	0.07	0.07	36	Blue Lakes, LLC	Residential
42	0.07	0.07	36	Blue Lakes, LLC	Residential
43	0.07	0.07	36	Blue Lakes, LLC	Residential
44	0.07	0.07	36	Blue Lakes, LLC	Residential
45	0.07	0.07	36	Blue Lakes, LLC	Residential
46	0.07	0.07	36	Blue Lakes, LLC	Residential
47	0.07	0.07	36	Blue Lakes, LLC	Residential
48	0.07	0.07	36	Blue Lakes, LLC	Residential
49	0.07	0.07	36	Blue Lakes, LLC	Residential
50	0.07	0.07	36	Blue Lakes, LLC	Residential
51	0.07	0.07	36	Blue Lakes, LLC	Residential
52	0.07	0.07	36	Blue Lakes, LLC	Residential
53	0.07	0.07	36	Blue Lakes, LLC	Residential
54	0.07	0.07	36	Blue Lakes, LLC	Residential
55	0.07	0.07	36	Blue Lakes, LLC	Residential
56	0.07	0.07	36	Blue Lakes, LLC	Residential
57	0.07	0.07	36	Blue Lakes, LLC	Residential
58	0.07	0.07	36	Blue Lakes, LLC	Residential
59	0.07	0.07	36	Blue Lakes, LLC	Residential
60	0.07	0.07	36	Blue Lakes, LLC	Residential
61	0.07	0.07	36	Blue Lakes, LLC	Residential
62	0.07	0.07	36	Blue Lakes, LLC	Residential
63	0.07	0.07	36	Blue Lakes, LLC	Residential
64	0.07	0.07	36	Blue Lakes, LLC	Residential
65	0.07	0.07	36	Blue Lakes, LLC	Residential
66	0.07	0.07	36	Blue Lakes, LLC	Residential
67	0.07	0.07	36	Blue Lakes, LLC	Residential
68	0.07	0.07	36	Blue Lakes, LLC	Residential
69	0.07	0.07	36	Blue Lakes, LLC	Residential
70	0.07	0.07	36	Blue Lakes, LLC	Residential
71	0.07	0.07	36	Blue Lakes, LLC	Residential
72	0.07	0.07	36	Blue Lakes, LLC	Residential
73	0.07	0.07	36	Blue Lakes, LLC	Residential
74	0.07	0.07	36	Blue Lakes, LLC	Residential
75	0.07	0.07	36	Blue Lakes, LLC	Residential
76	0.07	0.07	36	Blue Lakes, LLC	Residential
77	0.07	0.07	36	Blue Lakes, LLC	Residential
78	0.07	0.07	36	Blue Lakes, LLC	Residential
79	0.07	0.07	36	Blue Lakes, LLC	Residential
80	0.07	0.07	36	Blue Lakes, LLC	Residential
81	0.07	0.07	36	Blue Lakes, LLC	Residential
82	0.07	0.07	36	Blue Lakes, LLC	Residential
83	0.07	0.07	36	Blue Lakes, LLC	Residential
84	0.07	0.07	36	Blue Lakes, LLC	Residential
85	0.07	0.07	36	Blue Lakes, LLC	Residential
86	0.07	0.07	36	Blue Lakes, LLC	Residential
87	0.07	0.07	36	Blue Lakes, LLC	Residential
88	0.07	0.07	36	Blue Lakes, LLC	Residential
89	0.07	0.07	36	Blue Lakes, LLC	Residential
90	0.07	0.07	36	Blue Lakes, LLC	Residential
91	0.07	0.07	36	Blue Lakes, LLC	Residential
92	0.07	0.07	36	Blue Lakes, LLC	Residential
93	0.07	0.07	36	Blue Lakes, LLC	Residential
94	0.07	0.07	36	Blue Lakes, LLC	Residential
95	0.07	0.07	36	Blue Lakes, LLC	Residential
96	0.07	0.07	36	Blue Lakes, LLC	Residential
97	0.07	0.07	36	Blue Lakes, LLC	Residential
98	0.07	0.07	36	Blue Lakes, LLC	Residential
99	0.07	0.07	36	Blue Lakes, LLC	Residential
100	0.07	0.07	36	Blue Lakes, LLC	Residential



- NOTES:
- (1) ALL LOTS SUBJECT TO A 5' DRAINAGE EASEMENT ALONG EACH LOT LINE.
 - (2) BEYOND 50' FROM FLOOD ELEVATION.
 - (3) * POI PLAN MUST BE SUBMITTED TO ETOWAH COUNTY HEALTH DEPARTMENT AND SUFFICIENT FILL MATERIAL IS REQUIRED ABOVE NATURAL GROUND IN FIELD.
 - (4) POI PLAN MUST BE SUBMITTED TO ETOWAH COUNTY HEALTH DEPARTMENT PRIOR TO INSTALLING SYSTEM WILL BE REQUIRED.

LOT	REQUIREMENT	FILL REQUIRED
LOT 1	14'	14'
LOT 2	14'	14'
LOT 3	14'	14'
LOT 4	14'	14'
LOT 5	14'	14'
LOT 6	14'	14'
LOT 7	14'	14'
LOT 8	14'	14'
LOT 9	14'	14'
LOT 10	14'	14'
LOT 11	14'	14'
LOT 12	14'	14'
LOT 13	14'	14'
LOT 14	14'	14'
LOT 15	14'	14'
LOT 16	14'	14'
LOT 17	14'	14'
LOT 18	14'	14'
LOT 19	14'	14'
LOT 20	14'	14'
LOT 21	14'	14'
LOT 22	14'	14'

CONSENTS AND APPROVALS:

CONSENT OF APPROVAL FOR RECORD:

CONSENT OF THE APPROVAL OF UTILITIES:

HEALTH DEPARTMENT CERTIFICATION:

STATE OF ALABAMA:

ETOWAH COUNTY:

NOTARY PUBLIC:

PLANNING COMMISSION:

LEGEND:

- IRON FOUND
- 1/2" REBAR SET W/CONC
- STAMPED "JBMT CONCRETS"

SCALE: 1" = 100'

DATE: 5-22-18

PROJECT: BLUE LAKES ESTATES PHASE II

PREPARED BY: JBMT

APPROVED BY: [Signatures]

JBMT

Jones, Blair, Waldrop and Tucker, Inc.
Consulting Engineers and Land Surveyors
305 N. Park Street, Suite 200, Etowah, AL 36032
Phone: 205-471-2500 Fax: 205-471-2504