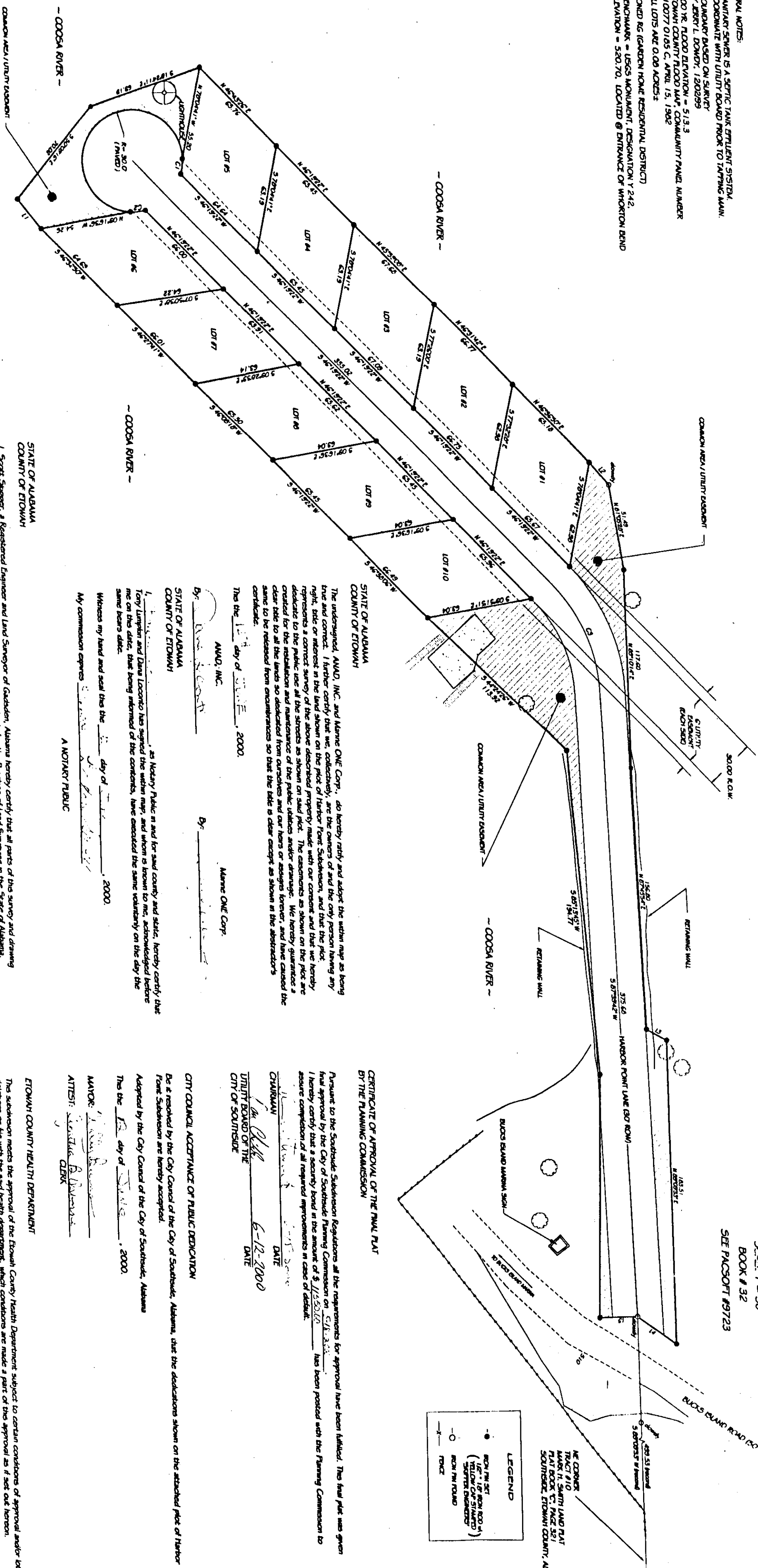


**HARBOR POINT SUBDIVISION**  
 BEING A PORTION OF TRACT #10  
 OF THE MARK 'H' SMITH LANDS  
 AS RECORDED IN PLAT BOOK 'C', PAGE 321  
 BEING A PORTION OF THE  
 NW 1/4 - NE 1/4, SECTION 5, T-13-S, R-6-W  
 SOUTHSIDE, ETOWAH COUNTY, ALABAMA

*Old K pg 104*  
*See Misc doc #*  
*2000-3191*  
*(put on Plat Book)*

PROJECT #99149  
 SCALE 1" = 30'  
 BOOK # 32  
 SEE PLATBOOK #9723

- GENERAL NOTES:  
 1.) SURVEY DONE BY A LICENSED SURVEYOR USING THE FOLLOWING DATA:  
 2.) BENCHMARK USED ON SURVEY  
 BY JOHN L. DOWDY, 1502999  
 3.) LOT 'K' ELEVATION = 513.3  
 4.) ALL LOTS ARE 0.08 ACRES  
 5.) ZONED RG (RESIDENTIAL DISTRICT)  
 6.) BENCHMARK = LEAS MOUNTAIN, DISTANCE 1724.2,  
 ELEVATION = 520.70, LOCATED @ DISTANCE OF WINDY ROAD



**CERTIFICATE OF APPROVAL OF THE FINAL PLAT**  
 BY THE PLANNING COMMISSION

Pursuant to the Subdivision Regulations at the requirements for approval have been fulfilled. The final plat was given final approval by the City Council of the City of Southside, Alabama, dated the date shown on the attached plat of Harbor Point Subdivision as being acceptable.  
 I hereby certify that a security bond in the amount of \$11,550.00 has been provided with the Planning Commission to assure completion of all required improvements in case of default.

CHRYSTIAN \_\_\_\_\_ DATE 6-12-2000  
 Mayor  
 CITY BOARD OF THE  
 CITY OF SOUTHSIDE

**CITY COUNCIL ACCEPTANCE OF PUBLIC DEPOSITION**

Be it resolved by the City Council of the City of Southside, Alabama, that the depositions shown on the attached plat of Harbor Point Subdivision are hereby accepted.  
 Adopted by the City Council of the City of Southside, Alabama  
 This the 12th day of June, 2000.  
 MANOR: Christie A. Babin  
 ATTORNEY: Christie A. Babin  
 CLERK

**ETOWAH COUNTY HEALTH DEPARTMENT**

This subdivision meets the approval of the Etowah County Health Department subject to certain conditions of approval and/or conditions on the plat and health department, when conditions are made a part of this approval as if set out hereon.  
 1.) Solid lots, having access to public water and sanitary sewers, meet connect.  
 Approved by: \_\_\_\_\_ DATE \_\_\_\_\_  
 ETOWAH COUNTY HEALTH DEPARTMENT

PREPARED BY:  
 SKIPPER ENGINEERING, INC.  
 CIVIL ENGINEERING & SURVEYING  
 MOBILE, AL 36688  
 PHONE 252-435-7776  
 SURVEY@SKIPPERINC.COM

*Restrictions*  
*Old K pg 104*  
*misc doc # 2000-5016*  
*put on Plat Book*

LOT	ACRES	DEVELOPER	DEVELOPER'S SHARE	DEVELOPER'S SHARE	DEVELOPER'S SHARE
1	0.08	SKIPPER ENGINEERING, INC.	0.08	0.08	0.08
2	0.08	SKIPPER ENGINEERING, INC.	0.08	0.08	0.08
3	0.08	SKIPPER ENGINEERING, INC.	0.08	0.08	0.08
4	0.08	SKIPPER ENGINEERING, INC.	0.08	0.08	0.08
5	0.08	SKIPPER ENGINEERING, INC.	0.08	0.08	0.08
6	0.08	SKIPPER ENGINEERING, INC.	0.08	0.08	0.08
7	0.08	SKIPPER ENGINEERING, INC.	0.08	0.08	0.08
8	0.08	SKIPPER ENGINEERING, INC.	0.08	0.08	0.08
9	0.08	SKIPPER ENGINEERING, INC.	0.08	0.08	0.08
10	0.08	SKIPPER ENGINEERING, INC.	0.08	0.08	0.08
11	0.08	SKIPPER ENGINEERING, INC.	0.08	0.08	0.08
12	0.08	SKIPPER ENGINEERING, INC.	0.08	0.08	0.08
13	0.08	SKIPPER ENGINEERING, INC.	0.08	0.08	0.08
14	0.08	SKIPPER ENGINEERING, INC.	0.08	0.08	0.08
15	0.08	SKIPPER ENGINEERING, INC.	0.08	0.08	0.08
16	0.08	SKIPPER ENGINEERING, INC.	0.08	0.08	0.08
17	0.08	SKIPPER ENGINEERING, INC.	0.08	0.08	0.08
18	0.08	SKIPPER ENGINEERING, INC.	0.08	0.08	0.08
19	0.08	SKIPPER ENGINEERING, INC.	0.08	0.08	0.08
20	0.08	SKIPPER ENGINEERING, INC.	0.08	0.08	0.08

STATE OF ALABAMA  
 COUNTY OF ETOWAH  
 I, Skipper, a Registered Engineer and Land Surveyor of Alabama, hereby certify that all parts of this survey and drawing have been completed in accordance with the Minimum Technical Standards for the Practice of Land Surveying in the State of Alabama, adopted April 15, 1982 and amended April 15, 1982 and that the 100 yr. flood elevation is 513.30.  
 I further certify that I have complied with the Federal Insurance Administration Flood Hazard Boundary Map (Community # 010077 0100) of Etowah County, Alabama, dated April 15, 1982 and that the 100 yr. flood elevation is 513.30.  
 According to my survey the 25th day of May, 2000.  
 Skipper Engineering, Inc.  
 15015 Highway 120, Box 41  
 Etowah, AL 35894  
 State of Alabama, Etowah County  
 My commission expires \_\_\_\_\_

