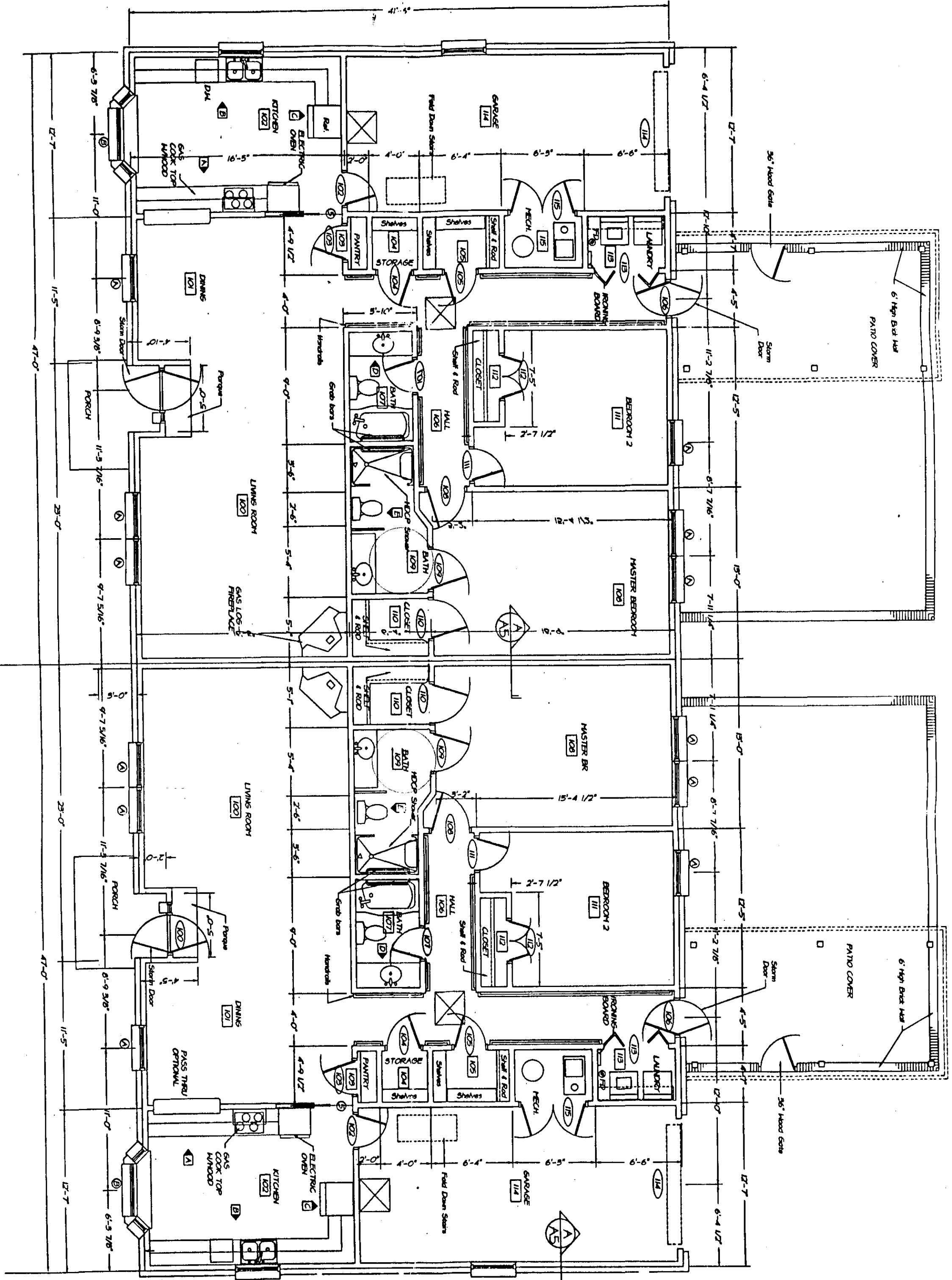
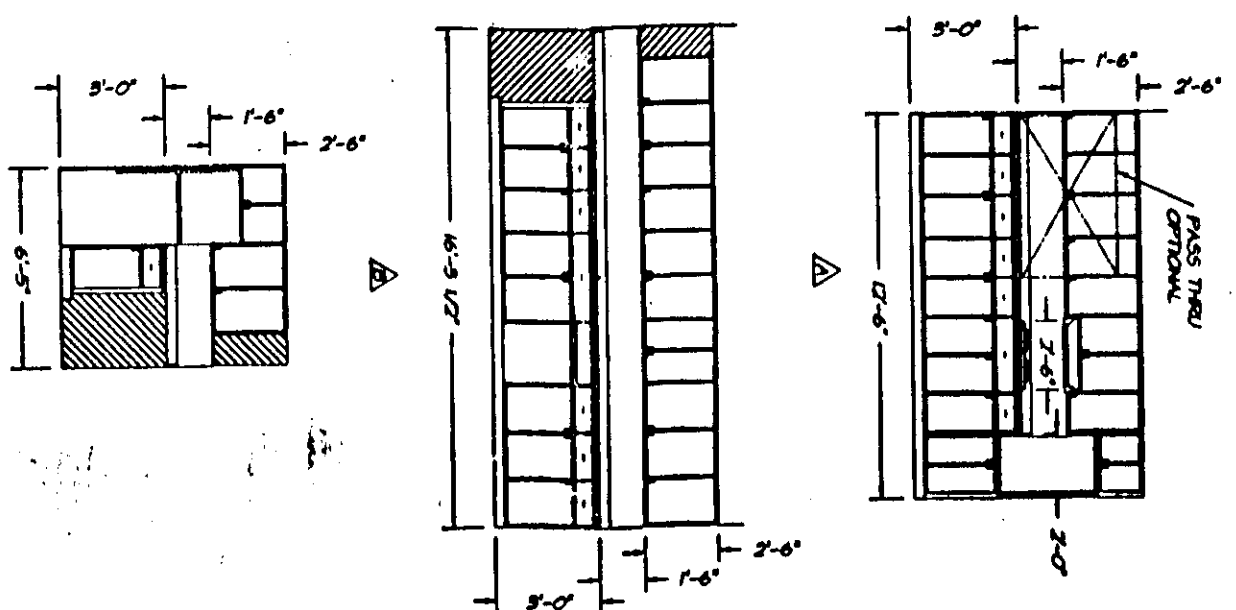


FLOOR PLANS 1/4" = 1'-0"



NOTE: ALL UNITS TO BE FINISHED WITH 3/4" x 6" OAK VENEER STAIRS WITH 1/2" GROUVE BOARD FINISH. EXCEPT FOR HALL AND LINEN CLOSET WHICH WILL BE SHELVING WITH 3/4" X 1" GROUVE BOARD.

CABINET ELEVATIONS 1/4" = 1'-0"



APPROVAL	DATE
	5 April 84
DRAWN	CHECKED
NO. OF SHEETS	NO. OF SHEETS
3	4

**RONALD V. NANCE**  
REGISTERED ARCHITECT  
MONTGOMERY, ALABAMA  
MEMBER AMERICAN INSTITUTE OF ARCHITECTS

FIVE UNIT SENIORS CONDO  
for MR. JAMES H. PRUETT  
GADSDEN, ALABAMA

PROPOSED  
9 SHEETS

99-B

