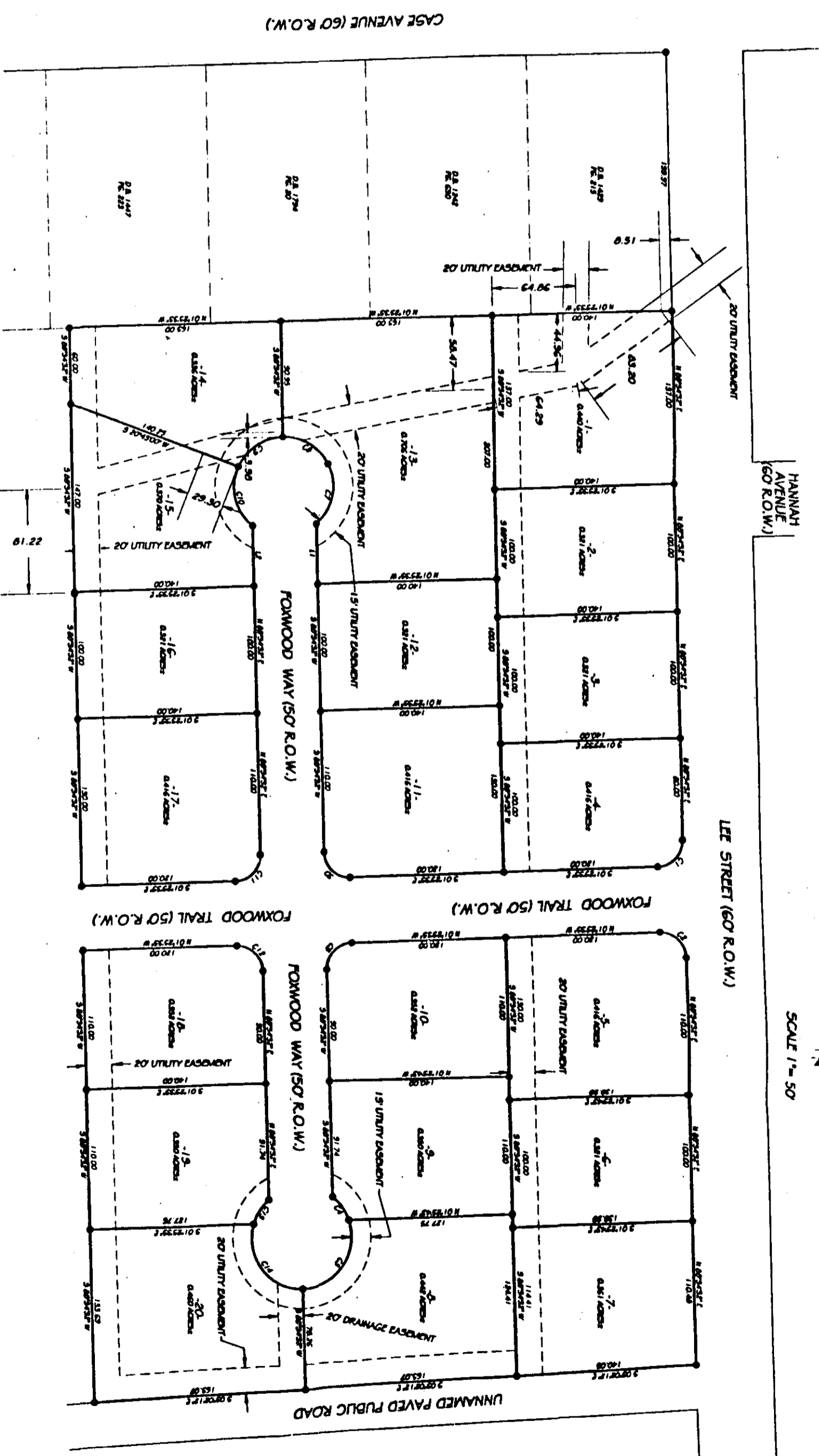


-- FOXWOOD MEADOWS --
 REARRANGEMENTS OF FOXWOOD MEADOWS SUBDIVISION
 PREVIOUSLY RECORDED IN PLAT BOOK "K", PAGE 70
 LOCATED IN FORKION SECTION 15, T-12-S, R-5-E
 ATTALA, FLOWAH COUNTY, ALABAMA

PLAT BOOK K, PAGE 96



SCALE 1" = 50'
 ASSUMED

OWNER'S CERTIFICATE

OWNER'S CERTIFICATE AND DECLARATION. We, the undersigned William R. Long do hereby certify that I am the owner of and the only person having any right, title, or interest in the land shown on the plat of Foxwood Meadows Subdivision (as amended), and that the Plat presents a correct and true and accurate representation of the land shown thereon, and that the same are to be used for the purposes and maintenance of public utilities. We hereby guarantee a clear title to all lands so dedicated from encumbrances and our heirs or assigns forever, and have caused the amendments to be recorded in the public records of the State of Alabama, and have caused the amendments to be recorded in the public records of the State of Alabama, and have caused the amendments to be recorded in the public records of the State of Alabama.

William R. Long
 WILLIAM R. LONG

Witness: _____ this 25th day of January 2000

William R. Long
 WILLIAM R. LONG

SUBDIVISION CERTIFICATE

SUBDIVISION CERTIFICATE. I, Larry W. Walker, the undersigned, do hereby certify that I am a professional land surveyor and that the amended map of Foxwood Meadows Subdivision (as amended) consisting of one sheet, correctly represents a survey made under my supervision on the 29th day of October, 1999, and that all of the monuments shown hereon actually exist and their positions are correctly shown.

Larry W. Walker
 LARRY W. WALKER

Witness: _____ this 25th day of January 2000

Larry W. Walker
 LARRY W. WALKER

CERTIFICATION OF APPROVAL FOR RECORDING

I hereby certify that the subdivision plat for Foxwood Meadows Subdivision (as amended) has been found to comply with the Regulations for Attala, Alabama with the exception of such variations as are noted in the notes of the Planning Commission, and that it has been approved for recording in the office of the Probate Judge of Etowah County.

David P. Phillips
 DAVID P. PHILLIPS

City of Attala Water Works Board Street: STATE ST.
 ATTALA, ALABAMA 36824

State of Alabama - 2000
 Statewide Election Results
 11/02/00

NAME	DATE	TIME
1	11/02/00	11:00
2	11/02/00	11:00
3	11/02/00	11:00
4	11/02/00	11:00
5	11/02/00	11:00
6	11/02/00	11:00
7	11/02/00	11:00
8	11/02/00	11:00
9	11/02/00	11:00
10	11/02/00	11:00
11	11/02/00	11:00
12	11/02/00	11:00
13	11/02/00	11:00
14	11/02/00	11:00
15	11/02/00	11:00
16	11/02/00	11:00
17	11/02/00	11:00
18	11/02/00	11:00
19	11/02/00	11:00
20	11/02/00	11:00
21	11/02/00	11:00
22	11/02/00	11:00
23	11/02/00	11:00
24	11/02/00	11:00
25	11/02/00	11:00
26	11/02/00	11:00
27	11/02/00	11:00
28	11/02/00	11:00
29	11/02/00	11:00
30	11/02/00	11:00
31	11/02/00	11:00
32	11/02/00	11:00
33	11/02/00	11:00
34	11/02/00	11:00
35	11/02/00	11:00
36	11/02/00	11:00
37	11/02/00	11:00
38	11/02/00	11:00
39	11/02/00	11:00
40	11/02/00	11:00
41	11/02/00	11:00
42	11/02/00	11:00
43	11/02/00	11:00
44	11/02/00	11:00
45	11/02/00	11:00
46	11/02/00	11:00
47	11/02/00	11:00
48	11/02/00	11:00
49	11/02/00	11:00
50	11/02/00	11:00
51	11/02/00	11:00
52	11/02/00	11:00
53	11/02/00	11:00
54	11/02/00	11:00
55	11/02/00	11:00
56	11/02/00	11:00
57	11/02/00	11:00
58	11/02/00	11:00
59	11/02/00	11:00
60	11/02/00	11:00
61	11/02/00	11:00
62	11/02/00	11:00
63	11/02/00	11:00
64	11/02/00	11:00
65	11/02/00	11:00
66	11/02/00	11:00
67	11/02/00	11:00
68	11/02/00	11:00
69	11/02/00	11:00
70	11/02/00	11:00
71	11/02/00	11:00
72	11/02/00	11:00
73	11/02/00	11:00
74	11/02/00	11:00
75	11/02/00	11:00
76	11/02/00	11:00
77	11/02/00	11:00
78	11/02/00	11:00
79	11/02/00	11:00
80	11/02/00	11:00
81	11/02/00	11:00
82	11/02/00	11:00
83	11/02/00	11:00
84	11/02/00	11:00
85	11/02/00	11:00
86	11/02/00	11:00
87	11/02/00	11:00
88	11/02/00	11:00
89	11/02/00	11:00
90	11/02/00	11:00
91	11/02/00	11:00
92	11/02/00	11:00
93	11/02/00	11:00
94	11/02/00	11:00
95	11/02/00	11:00
96	11/02/00	11:00
97	11/02/00	11:00
98	11/02/00	11:00
99	11/02/00	11:00
100	11/02/00	11:00

GENERAL NOTES

- 1) NOT TO SCALE
- 2) ALL DIMENSIONS ARE IN FEET AND INCHES UNLESS OTHERWISE NOTED.

FORWARDED BY:
 LARRY W. WALKER, P.S.
 A.L.A. REG. NO. 21103
 3031 CADDILLAC BLVD.
 HONOLULU, HI 96819
 (256) 492-7340

Approved by: _____ DATE: _____
 ETOWAH COUNTY HEALTH DEPARTMENT

Note: 1) All drawings must connect to public water and sewer which are available.
 2) For subdivision instructions Book 19, Dec 1998