

STATE OF ALABAMA  
COUNTY OF ETOWAH

I, Scott Soper, a Registered Engineer and Land Surveyor of Alabama, hereby certify that the foregoing plat, as hereby ready, correct and adopt the same as being true and correct, this 24th day of September, 1998.

My commission expires 10-01-01

My commission expires 10-01-01

My commission expires 10-01-01

I, James L. Rabiner, as Mayor, Mayor and for said County and State, hereby certify that the foregoing plat, as hereby ready, correct and adopt the same as being true and correct, this 24th day of September, 1998.

My commission expires 10-01-01

My commission expires 10-01-01

My commission expires 10-01-01

My commission expires 10-01-01

My commission expires 10-01-01

My commission expires 10-01-01

My commission expires 10-01-01

My commission expires 10-01-01

My commission expires 10-01-01

My commission expires 10-01-01

My commission expires 10-01-01

My commission expires 10-01-01

My commission expires 10-01-01

My commission expires 10-01-01

My commission expires 10-01-01

My commission expires 10-01-01

My commission expires 10-01-01

My commission expires 10-01-01

My commission expires 10-01-01

My commission expires 10-01-01

My commission expires 10-01-01

My commission expires 10-01-01

My commission expires 10-01-01

My commission expires 10-01-01

My commission expires 10-01-01

My commission expires 10-01-01

My commission expires 10-01-01

My commission expires 10-01-01

My commission expires 10-01-01

My commission expires 10-01-01

My commission expires 10-01-01

My commission expires 10-01-01

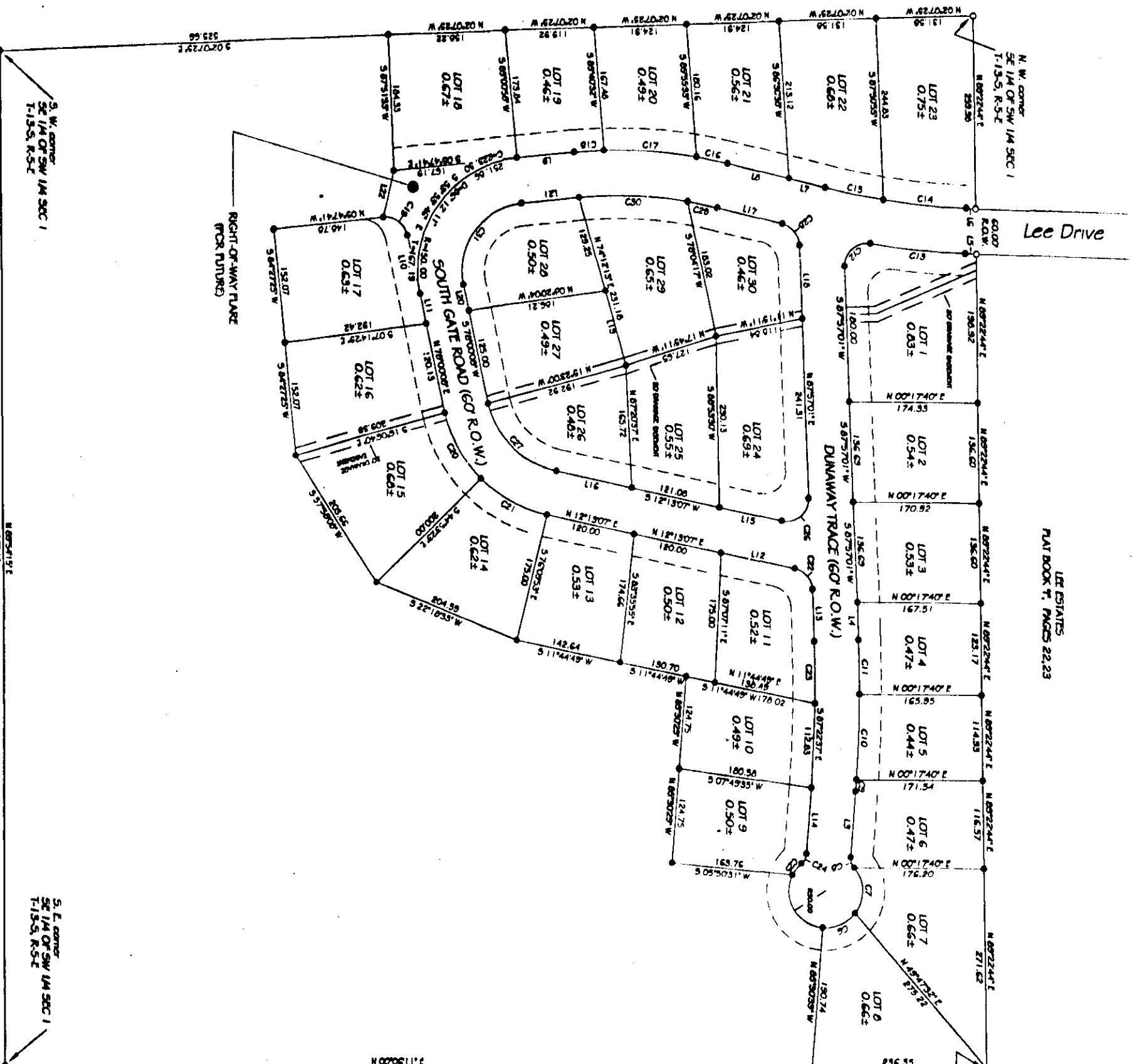
My commission expires 10-01-01

My commission expires 10-01-01

My commission expires 10-01-01

# TIMBER RIDGE SUBDIVISION

SE 1/4 OF SW 1/4 SEC. 1, T-13-S, R-5-E  
RAINBOW CITY, ETOWAH COUNTY, ALABAMA



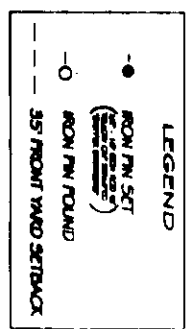
LOT 29  
PLAT BOOK N, PAGES 22, 23

LOT 29  
PLAT BOOK N, PAGES 22, 23

PROJECT #9736  
SCALE 1" = 100'  
BOOK 6

Assumed

PLAT BOOK K, PAGE 80



LOT	ACRES	AREA	PERCENT
1	0.2000	13,777	2.00
2	0.2000	13,777	2.00
3	0.2000	13,777	2.00
4	0.2000	13,777	2.00
5	0.2000	13,777	2.00
6	0.2000	13,777	2.00
7	0.2000	13,777	2.00
8	0.2000	13,777	2.00
9	0.2000	13,777	2.00
10	0.2000	13,777	2.00
11	0.2000	13,777	2.00
12	0.2000	13,777	2.00
13	0.2000	13,777	2.00
14	0.2000	13,777	2.00
15	0.2000	13,777	2.00
16	0.2000	13,777	2.00
17	0.2000	13,777	2.00
18	0.2000	13,777	2.00
19	0.2000	13,777	2.00
20	0.2000	13,777	2.00
21	0.2000	13,777	2.00
22	0.2000	13,777	2.00
23	0.2000	13,777	2.00
24	0.2000	13,777	2.00
25	0.2000	13,777	2.00
26	0.2000	13,777	2.00
27	0.2000	13,777	2.00
28	0.2000	13,777	2.00
29	0.2000	13,777	2.00
30	0.2000	13,777	2.00

LINE	BEARING	DISTANCE	AREA	PERCENT
C1	N 89° 59' 59" W	11.777	13,777	2.00
C2	S 89° 59' 59" E	11.777	13,777	2.00
C3	N 89° 59' 59" W	11.777	13,777	2.00
C4	S 89° 59' 59" E	11.777	13,777	2.00
C5	N 89° 59' 59" W	11.777	13,777	2.00
C6	S 89° 59' 59" E	11.777	13,777	2.00
C7	N 89° 59' 59" W	11.777	13,777	2.00
C8	S 89° 59' 59" E	11.777	13,777	2.00
C9	N 89° 59' 59" W	11.777	13,777	2.00
C10	S 89° 59' 59" E	11.777	13,777	2.00
C11	N 89° 59' 59" W	11.777	13,777	2.00
C12	S 89° 59' 59" E	11.777	13,777	2.00
C13	N 89° 59' 59" W	11.777	13,777	2.00
C14	S 89° 59' 59" E	11.777	13,777	2.00
C15	N 89° 59' 59" W	11.777	13,777	2.00
C16	S 89° 59' 59" E	11.777	13,777	2.00
C17	N 89° 59' 59" W	11.777	13,777	2.00
C18	S 89° 59' 59" E	11.777	13,777	2.00
C19	N 89° 59' 59" W	11.777	13,777	2.00
C20	S 89° 59' 59" E	11.777	13,777	2.00
C21	N 89° 59' 59" W	11.777	13,777	2.00
C22	S 89° 59' 59" E	11.777	13,777	2.00
C23	N 89° 59' 59" W	11.777	13,777	2.00
C24	S 89° 59' 59" E	11.777	13,777	2.00
C25	N 89° 59' 59" W	11.777	13,777	2.00
C26	S 89° 59' 59" E	11.777	13,777	2.00
C27	N 89° 59' 59" W	11.777	13,777	2.00
C28	S 89° 59' 59" E	11.777	13,777	2.00
C29	N 89° 59' 59" W	11.777	13,777	2.00
C30	S 89° 59' 59" E	11.777	13,777	2.00

DESIGNED BY:  
SKINNER ENGINEERING, INC.  
CIVIL ENGINEERING & SURVEYING  
1471 WOODLAND DRIVE  
RAINFORD, ALABAMA 36067  
PHONE 205-413-7726

