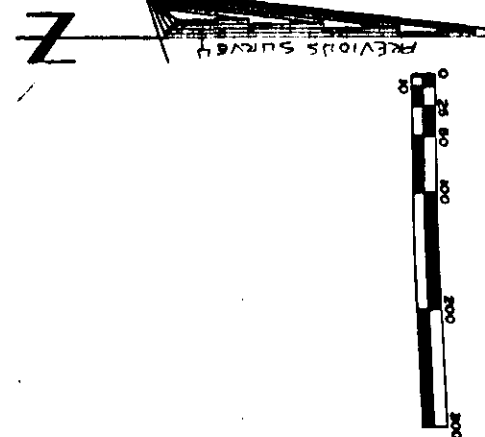
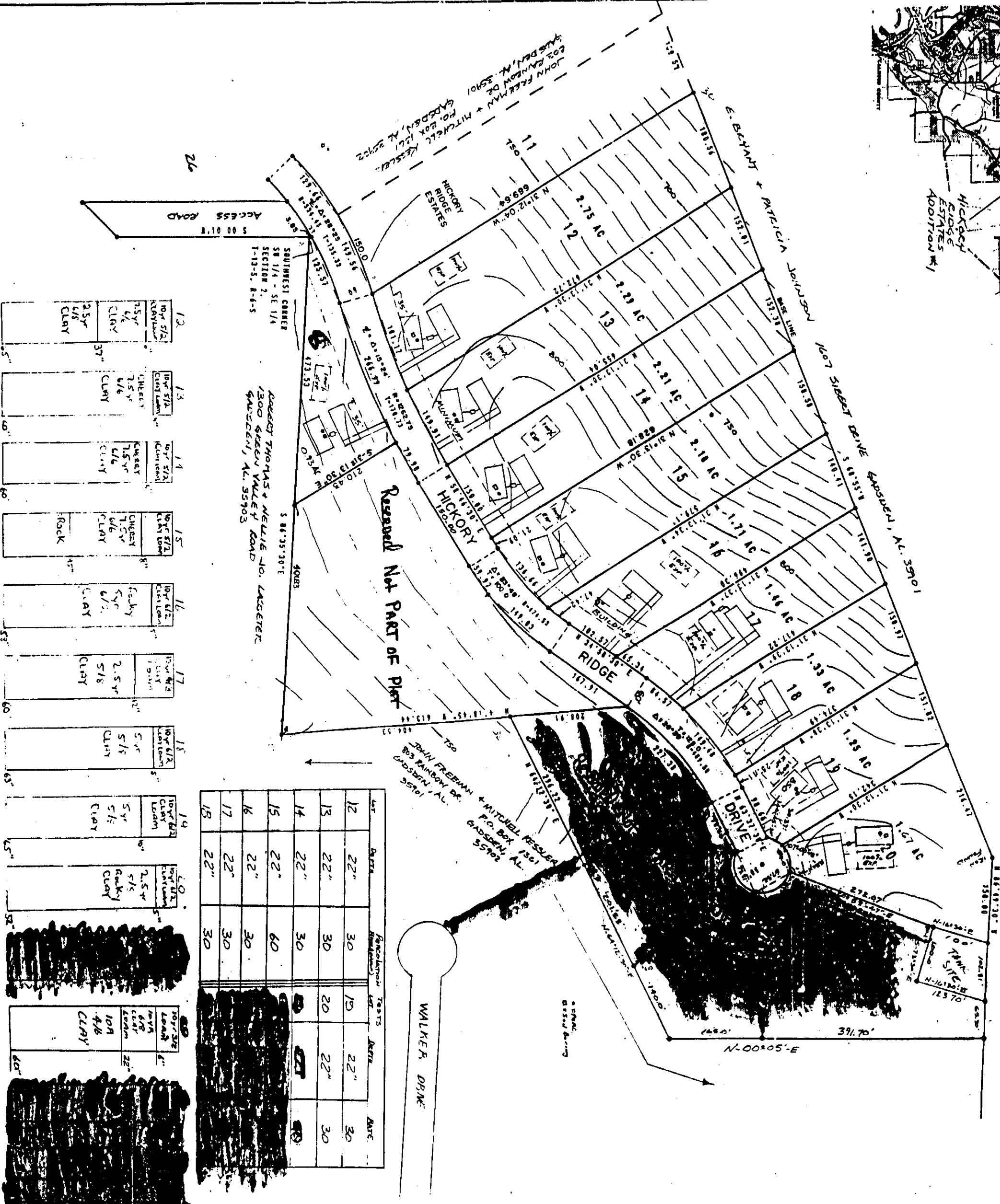
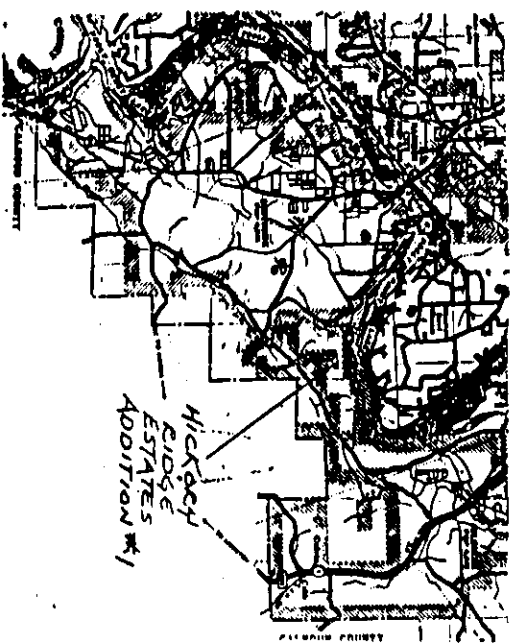


HICKORY RIDGE ESTATES ADDITION NO. 1

LOCATED IN:
 SE 1/4-SW 1/4 & SW 1/4-SE 1/4, SECTION 2, T19-13-SOUTH, RM-6-EAST
 HUNTSVILLE MERIDIAN, ETOWAH COUNTY, ALABAMA
 WATER TANK OVERFLOW ELEVATION 870.5-NEW TANK @ HIGHER ELEV
 TO BE INSTALLED
 TOTAL ACRES - 28.94

SCALE 1" = 100 FT.
 FILE NO. 90-124
 JOB NO. 97-70-115



STATE OF ALABAMA

ETOWAH COUNTY
 I, JAMES G. HARRIS, JR., a Notary Public and Secretary of the Board of Commissioners of Etowah County, Alabama, do hereby certify that the above is a true and correct plat of the subdivision of the land described in the plat and that the same has been duly recorded in the public records of Etowah County, Alabama, and that the same is now a part of the public records of Etowah County, Alabama.

WITNESSED my hand and official seal of office this 12th day of November, 1997.
 JAMES G. HARRIS, JR.
 Notary Public

ETOWAH COUNTY HEALTH DEPARTMENT
 I, THOMAS M. BERRY, Health Officer of Etowah County, Alabama, do hereby certify that the above is a true and correct plat of the subdivision of the land described in the plat and that the same has been duly recorded in the public records of Etowah County, Alabama, and that the same is now a part of the public records of Etowah County, Alabama.

ETOWAH COUNTY BOARD OF HEALTH
 I, THOMAS M. BERRY, Health Officer of Etowah County, Alabama, do hereby certify that the above is a true and correct plat of the subdivision of the land described in the plat and that the same has been duly recorded in the public records of Etowah County, Alabama, and that the same is now a part of the public records of Etowah County, Alabama.

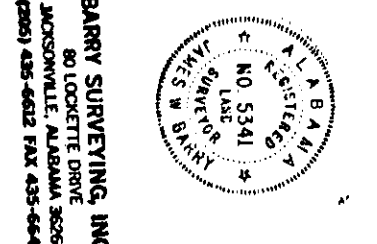
ETOWAH COUNTY BOARD OF HEALTH
 I, THOMAS M. BERRY, Health Officer of Etowah County, Alabama, do hereby certify that the above is a true and correct plat of the subdivision of the land described in the plat and that the same has been duly recorded in the public records of Etowah County, Alabama, and that the same is now a part of the public records of Etowah County, Alabama.

ETOWAH COUNTY BOARD OF HEALTH
 I, THOMAS M. BERRY, Health Officer of Etowah County, Alabama, do hereby certify that the above is a true and correct plat of the subdivision of the land described in the plat and that the same has been duly recorded in the public records of Etowah County, Alabama, and that the same is now a part of the public records of Etowah County, Alabama.

ETOWAH COUNTY BOARD OF HEALTH
 I, THOMAS M. BERRY, Health Officer of Etowah County, Alabama, do hereby certify that the above is a true and correct plat of the subdivision of the land described in the plat and that the same has been duly recorded in the public records of Etowah County, Alabama, and that the same is now a part of the public records of Etowah County, Alabama.

ETOWAH COUNTY BOARD OF HEALTH
 I, THOMAS M. BERRY, Health Officer of Etowah County, Alabama, do hereby certify that the above is a true and correct plat of the subdivision of the land described in the plat and that the same has been duly recorded in the public records of Etowah County, Alabama, and that the same is now a part of the public records of Etowah County, Alabama.

ETOWAH COUNTY BOARD OF HEALTH
 I, THOMAS M. BERRY, Health Officer of Etowah County, Alabama, do hereby certify that the above is a true and correct plat of the subdivision of the land described in the plat and that the same has been duly recorded in the public records of Etowah County, Alabama, and that the same is now a part of the public records of Etowah County, Alabama.



BARNEY SHERIDAN, INC.
 2000 W. UNIVERSITY BLVD.
 JACKSONVILLE, ALABAMA 36201