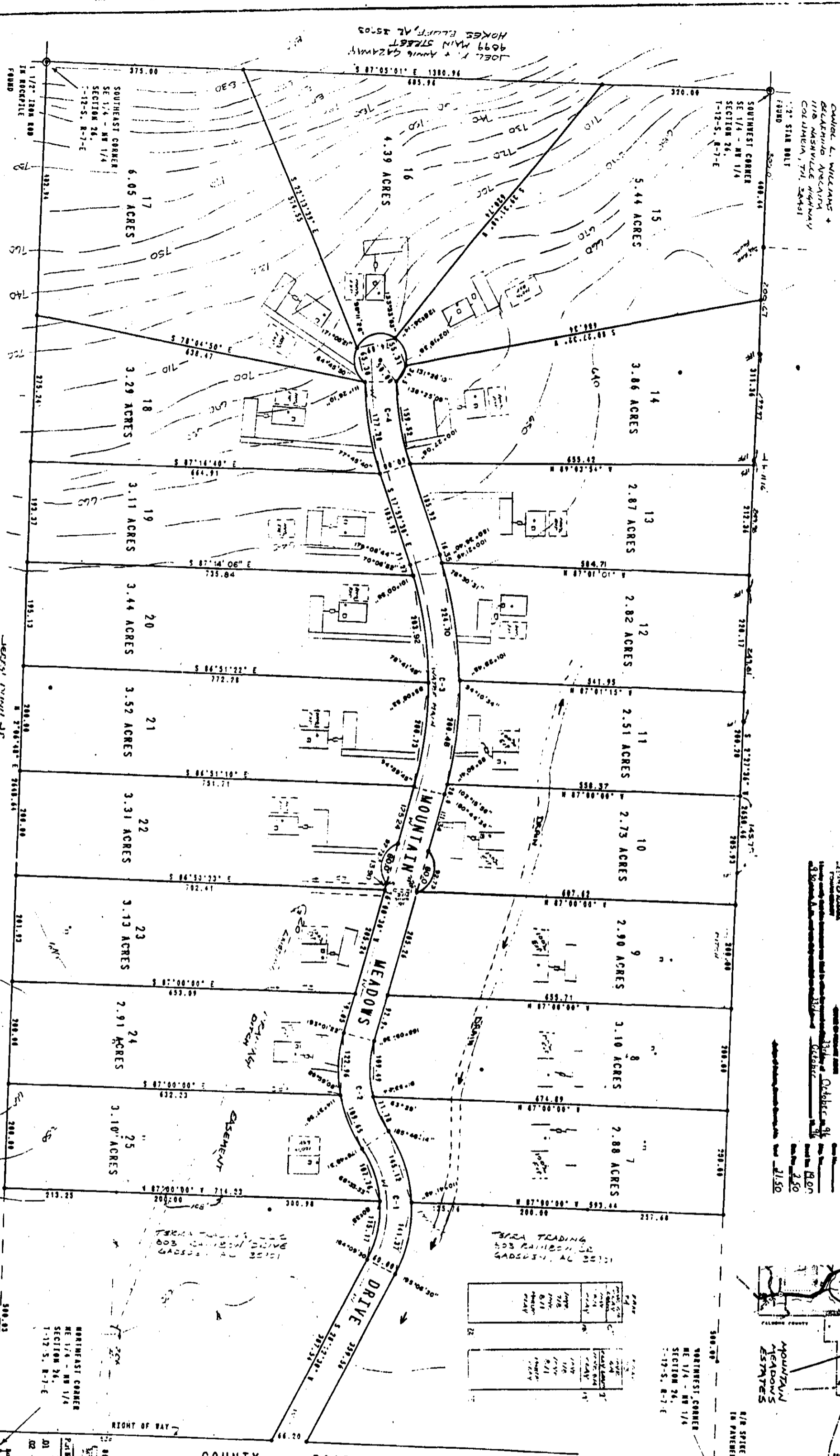


MOUNTAIN MEADOWS ESTATES  
LOCATED IN THE NE 1/4-NW 1/4 & SE 1/4-NW 1/4 OF SECTION 26, TOWNSHIP 12 SOUTH,  
RANGE 7 EAST, HUNTSVILLE MERIDIAN, ETOWAH COUNTY, ALABAMA



STATE OF ALABAMA  
COUNTY OF ETOWAH  
I, the undersigned, a Notary Public in and for said County, in said State, do hereby certify that the foregoing plat is a true and correct copy of the original as filed in my office on this 10th day of October, 1956.

Lot No.	Acres	Owner	Remarks
7	2.88	...	...
8	3.10	...	...
9	2.90	...	...
10	2.73	...	...
11	2.51	...	...
12	2.82	...	...
13	2.87	...	...
14	3.88	...	...
15	5.44	...	...
16	4.39	...	...
17	6.05	...	...
18	3.28	...	...
19	3.11	...	...
20	3.44	...	...
21	3.52	...	...
22	3.31	...	...
23	3.13	...	...
24	2.91	...	...
25	3.10	...	...

STATE OF ALABAMA  
COUNTY OF ETOWAH  
I, the undersigned, a Notary Public in and for said County, in said State, do hereby certify that the foregoing plat is a true and correct copy of the original as filed in my office on this 10th day of October, 1956.

STATE OF ALABAMA  
COUNTY OF ETOWAH  
I, the undersigned, a Notary Public in and for said County, in said State, do hereby certify that the foregoing plat is a true and correct copy of the original as filed in my office on this 10th day of October, 1956.

STATE OF ALABAMA  
COUNTY OF ETOWAH  
I, the undersigned, a Notary Public in and for said County, in said State, do hereby certify that the foregoing plat is a true and correct copy of the original as filed in my office on this 10th day of October, 1956.

Lot No.	Acres	Owner	Remarks
1	...	...	...
2	...	...	...
3	...	...	...
4	...	...	...
5	...	...	...
6	...	...	...
7	...	...	...
8	...	...	...
9	...	...	...
10	...	...	...
11	...	...	...
12	...	...	...
13	...	...	...
14	...	...	...
15	...	...	...
16	...	...	...
17	...	...	...
18	...	...	...
19	...	...	...
20	...	...	...
21	...	...	...
22	...	...	...
23	...	...	...
24	...	...	...
25	...	...	...