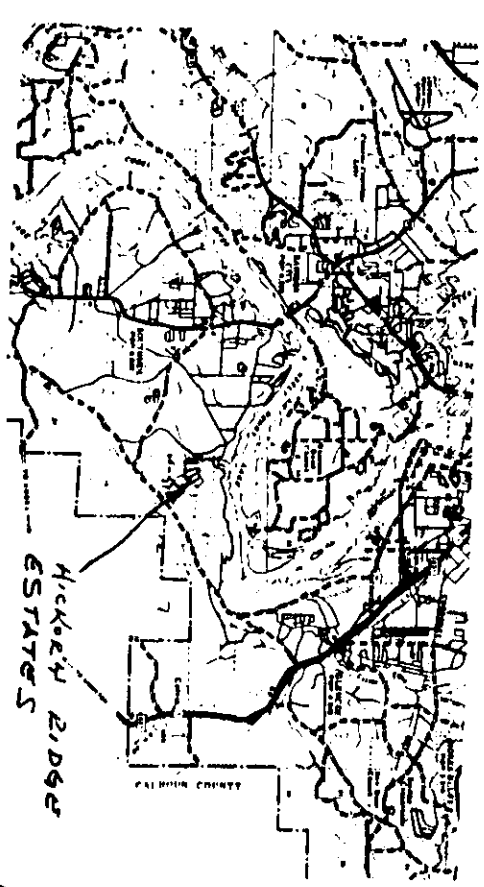
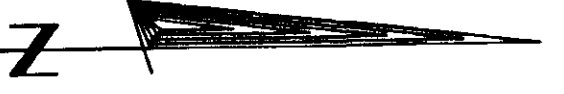
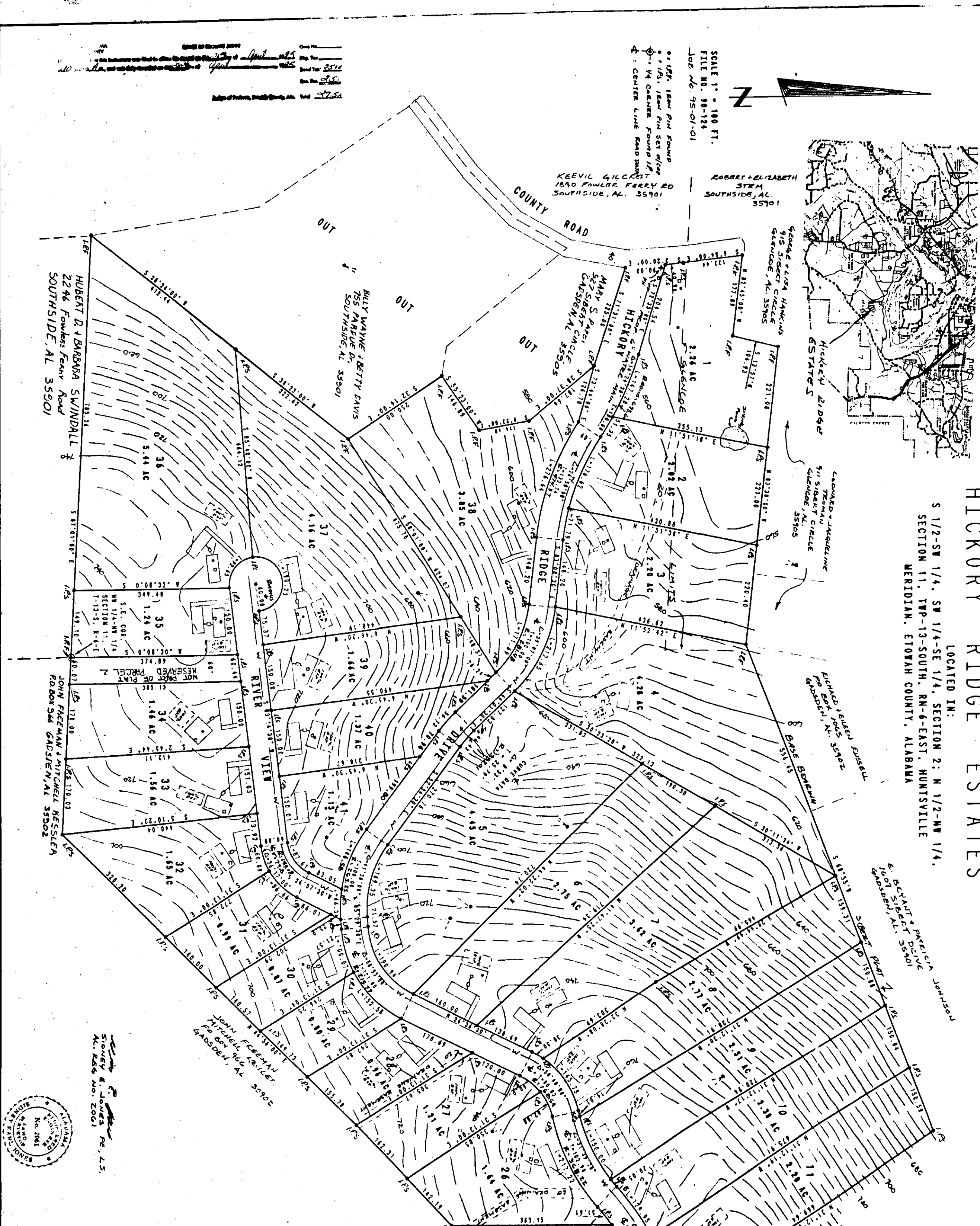


WATER TANK OVERFLOW ELEVATION - 870.5

SCALE 1" = 100 FT.  
FILE NO. 98-124  
JOB NO. 95-01-01

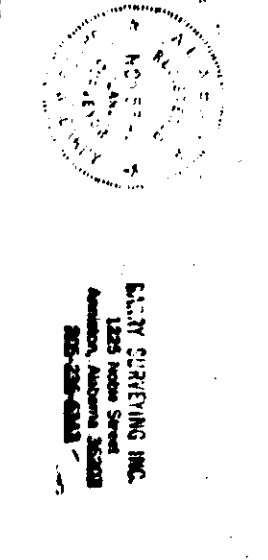
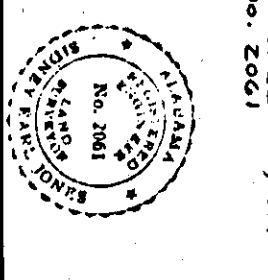


HICKORY RIDGE ESTATES  
LOCATED IN:  
S 1/2-SW 1/4, SW 1/4-SE 1/4, SECTION 2; N 1/2-NW 1/4,  
SECTION 11, TWP-13-SOUTH, RN-6-EAST, HUNTSVILLE  
MERIDIAN, ETOWAH COUNTY, ALABAMA



SEE MISC. 317  
PAGE 93

APPROVED BY: *[Signature]* DATE: 1-13-95  
APPROVED BY: *[Signature]* DATE: 1-13-95  
APPROVED BY: *[Signature]* DATE: 1-13-95  
APPROVED BY: *[Signature]* DATE: 1-13-95  
APPROVED BY: *[Signature]* DATE: 1-13-95  
APPROVED BY: *[Signature]* DATE: 1-13-95



STATE OF ALABAMA  
COUNTY OF ETOWAH  
I, the undersigned, a Notary Public, in and for said County, in said State, do hereby certify that John A. Frazier and Mitchell E. Nessler, whose names are hereon set on this day that being improved of the Commission of Notary Public, and whose full authority, executed the same voluntarily,  
GIVEN UNDER MY HAND AND OFFICIAL SEAL OF OFFICE THIS THE  
13th DAY OF Jan 1995  
JOHN A. FRAZIER  
NOTARY PUBLIC  
STATE OF ALABAMA  
COMM. NO. 2064