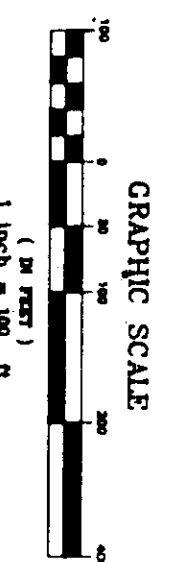
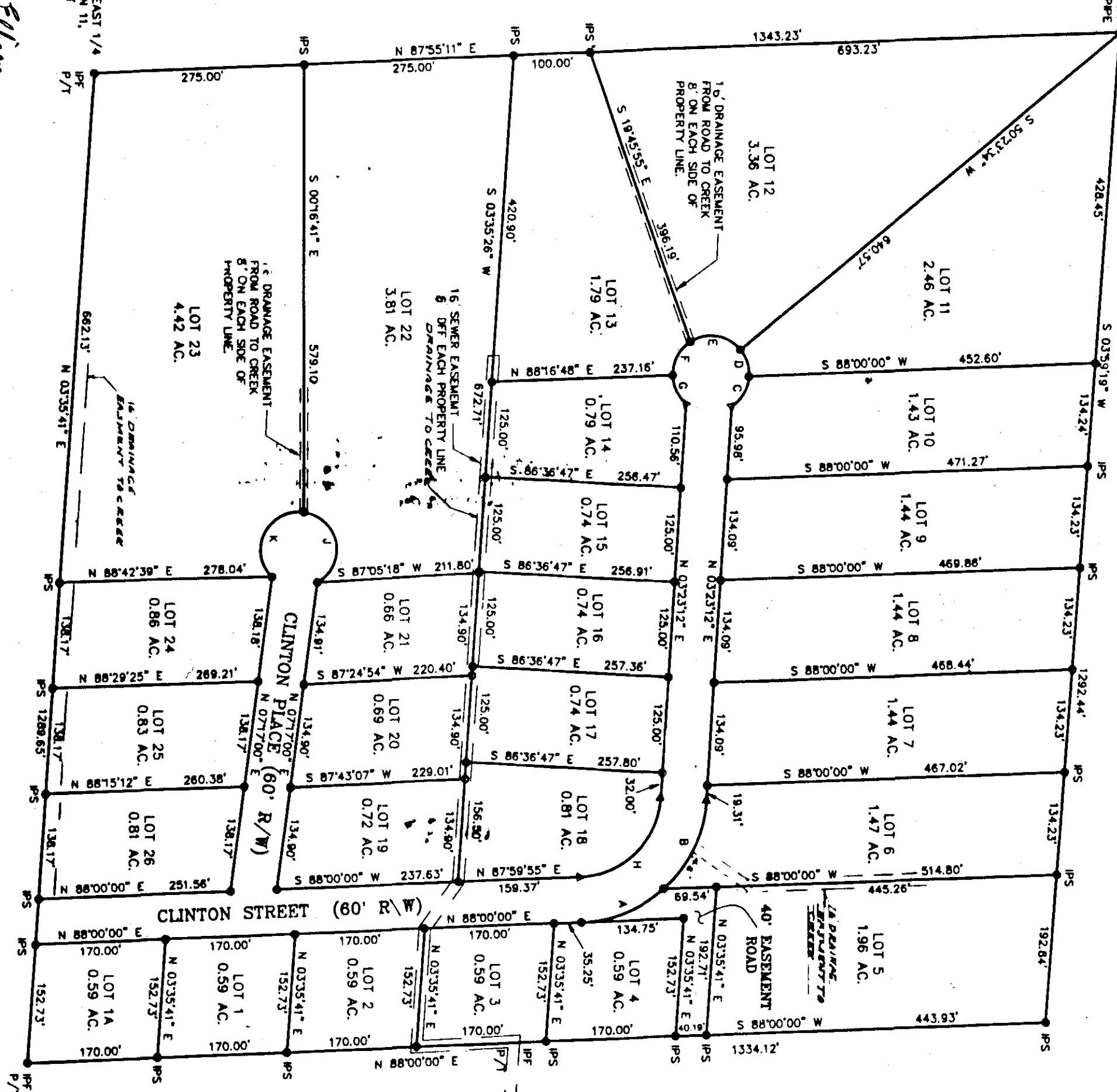




NORTHEAST CORNER OF THE NORTHEAST 1/4
TOWNSHIP 12 SOUTH, RANGE 7 EAST



CURVE	RADIUS	LENGTH	CHORD	BEARING
A	170.00'	118.77'	118.53'	N 87°59'37" E
B	170.00'	118.77'	118.53'	N 87°59'37" E
C	170.00'	118.77'	118.53'	N 87°59'37" E
D	50.00'	37.52'	36.65'	N 88°00'00" W
E	50.00'	72.21'	68.10'	N 88°00'00" W
F	50.00'	72.21'	68.10'	N 88°00'00" W
G	50.00'	72.21'	68.10'	N 88°00'00" W
H	50.00'	72.21'	68.10'	N 88°00'00" W
I	50.00'	72.21'	68.10'	N 88°00'00" W
J	50.00'	72.21'	68.10'	N 88°00'00" W
K	50.00'	72.21'	68.10'	N 88°00'00" W
L	50.00'	72.21'	68.10'	N 88°00'00" W
M	50.00'	72.21'	68.10'	N 88°00'00" W
N	50.00'	72.21'	68.10'	N 88°00'00" W
O	50.00'	72.21'	68.10'	N 88°00'00" W
P	50.00'	72.21'	68.10'	N 88°00'00" W
Q	50.00'	72.21'	68.10'	N 88°00'00" W
R	50.00'	72.21'	68.10'	N 88°00'00" W
S	50.00'	72.21'	68.10'	N 88°00'00" W
T	50.00'	72.21'	68.10'	N 88°00'00" W
U	50.00'	72.21'	68.10'	N 88°00'00" W
V	50.00'	72.21'	68.10'	N 88°00'00" W
W	50.00'	72.21'	68.10'	N 88°00'00" W
X	50.00'	72.21'	68.10'	N 88°00'00" W
Y	50.00'	72.21'	68.10'	N 88°00'00" W
Z	50.00'	72.21'	68.10'	N 88°00'00" W

LEGEND
 O R/W PIN SET
 P/T R/W PIN SET
 P/T R/W PIN SET

NOTE: ALL R/W PINS SET ARE 1/2" REBAR

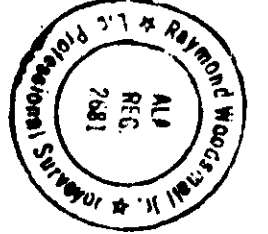
NOTE: WATER & SEWER LINES TO BE PROVIDED BY CITY OF HOOVER BLVD.

I, WESTER HILL OWNER OF SAID PROPERTY DO HEREBY RATIFY AND ADOPT THIS PLAT AS BEING TRUE AND CORRECT.

DATE: 8-3-94
WESTER HILL OWNER

NOTARY
 STATE OF ALABAMA
 COUNTY OF ETOWAH
 I, *Walter Hill*, Notary Public in and for the State of Alabama, do hereby certify that the foregoing plat was presented to me by the owner and who known to me, acknowledged before me this day that being informed of the contents of the conveyance, executed the same voluntarily on the day the same bears date. THIS 3rd day of August, 1994.
 WALTER HILL
 Notary Public

SURVEY OF:
CLINTON ESTATES
FIRST ADDITION
 BEING THE NORTHEAST QUARTER
 OF THE NORTHEAST QUARTER OF
 SECTION 11, TOWNSHIP 12 SOUTH,
 RANGE 7 EAST, ETOWAH COUNTY,
 ALABAMA.
 JUNE 20, 1994



STATE OF ALABAMA
 COUNTY OF ETOWAH
 I HEREBY CERTIFY THAT I HAVE MADE AN ACTUAL SURVEY OF THE HEREIN SHOWN LINES, SAID SURVEY WAS MADE FROM EXISTING MONUMENTS AND KNOWLEDGE AND ABILITY.
 ALL PARTS OF THIS SURVEY AND DRAWING WERE MADE IN ACCORDANCE WITH THE PROVISIONS OF THE STATUTE OF THE STATE OF ALABAMA, ACCORDING TO THE STANDARDS OF THE SURVEYING PROFESSION.
 DATE: 8-3-94
 WALTER HILL
 Surveyor



NORTHEAST CORNER OF THE NORTHEAST 1/4
TOWNSHIP 12 SOUTH, RANGE 7 EAST

APPROVED: *Robert Elston*
ETOWAH COUNTY ENGINEER

DATE: 9-1-94

APPROVED: *Walter Hill*
CITY OF HOOVER PLAT

DATE: 9/1/94