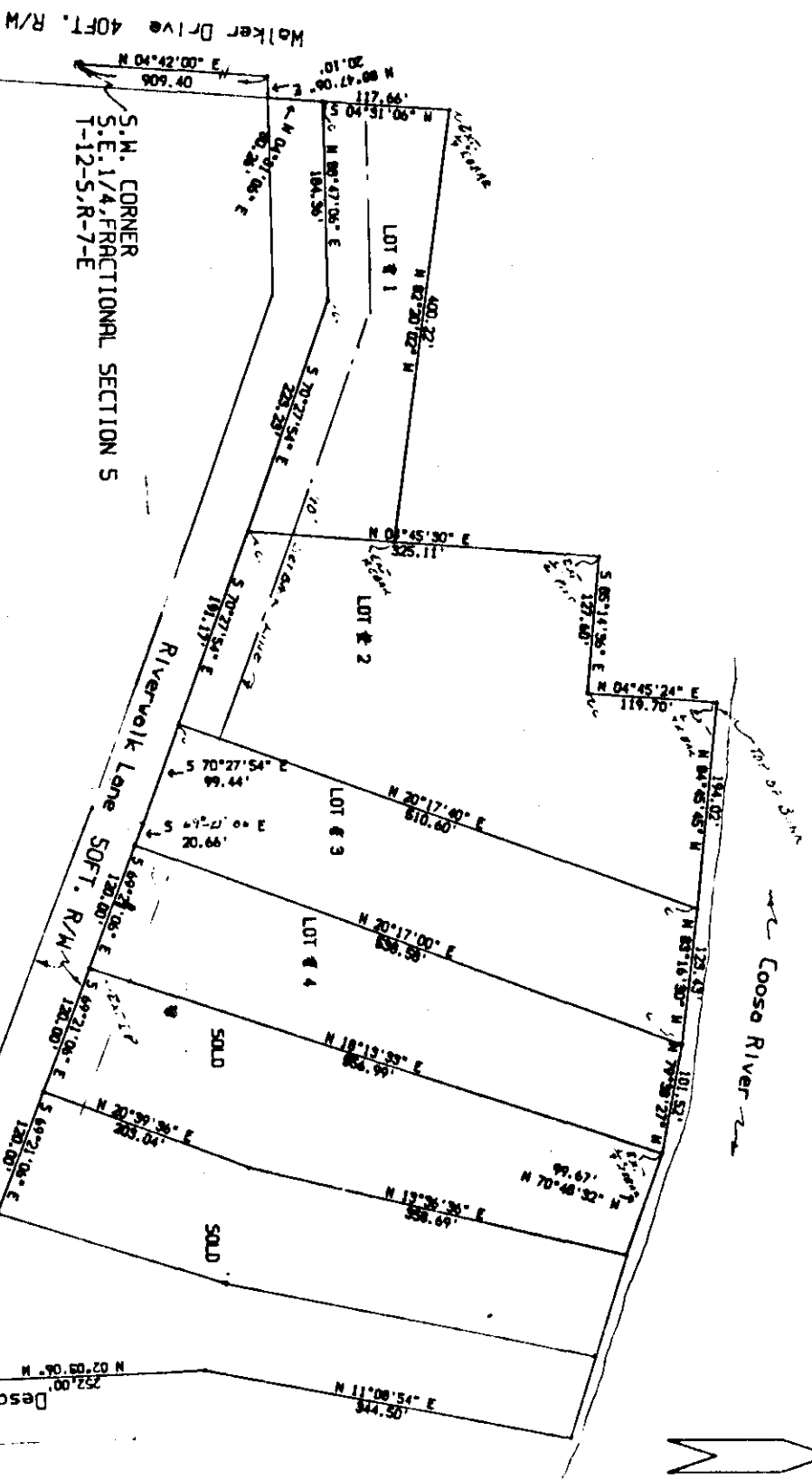


CONTOUR MAP
Scale: 1"=100'



RIVERWALK LANE
HOKE'S BLUFF, ALA.

SCALE 1"=100'
NORTH BY FIELD

Body of Hoke's Bluff, Alabama

TO: Honorable Mayor and City Council Members, City of Hoke's Bluff, Alabama

FROM: Mr. Robert L. Hoke, Surveyor

RE: Sewer Service Extension

The Sewer Board of the City of Hoke's Bluff is presently extending out sewer system to a previously unsewered section of Hoke's Bluff. This extension will include Riverwalk Lane, a 1/4 section of Section 5, T12S, R7E, S1/4, commencing on the 28th day of July, 1994.

28 July 1994

Robert L. Hoke
Surveyor
City of Hoke's Bluff

Body of Hoke's Bluff, Alabama

TO: Honorable Mayor and City Council Members, City of Hoke's Bluff, Alabama

FROM: Mr. Robert L. Hoke, Surveyor

RE: Sewer Service Extension

The Sewer Board of the City of Hoke's Bluff is presently extending out sewer system to a previously unsewered section of Hoke's Bluff. This extension will include Riverwalk Lane, a 1/4 section of Section 5, T12S, R7E, S1/4, commencing on the 28th day of July, 1994.

28 July 1994

Robert L. Hoke
Surveyor
City of Hoke's Bluff

Body of Hoke's Bluff, Alabama

TO: Honorable Mayor and City Council Members, City of Hoke's Bluff, Alabama

FROM: Mr. Robert L. Hoke, Surveyor

RE: Sewer Service Extension

The Sewer Board of the City of Hoke's Bluff is presently extending out sewer system to a previously unsewered section of Hoke's Bluff. This extension will include Riverwalk Lane, a 1/4 section of Section 5, T12S, R7E, S1/4, commencing on the 28th day of July, 1994.

28 July 1994

Robert L. Hoke
Surveyor
City of Hoke's Bluff

Body of Hoke's Bluff, Alabama

TO: Honorable Mayor and City Council Members, City of Hoke's Bluff, Alabama

FROM: Mr. Robert L. Hoke, Surveyor

RE: Sewer Service Extension

The Sewer Board of the City of Hoke's Bluff is presently extending out sewer system to a previously unsewered section of Hoke's Bluff. This extension will include Riverwalk Lane, a 1/4 section of Section 5, T12S, R7E, S1/4, commencing on the 28th day of July, 1994.

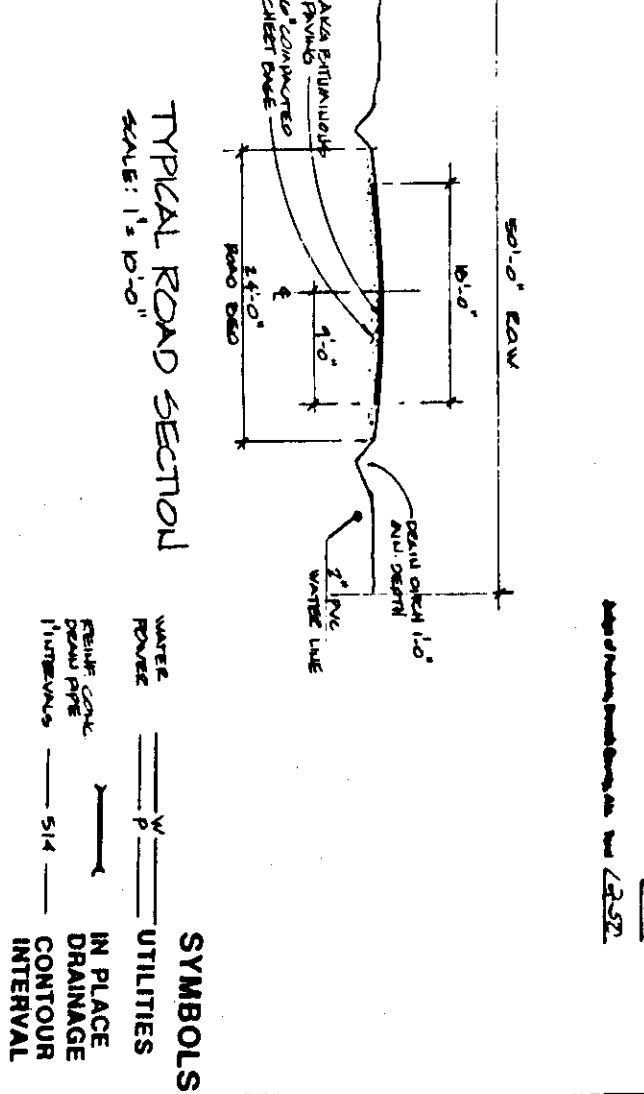
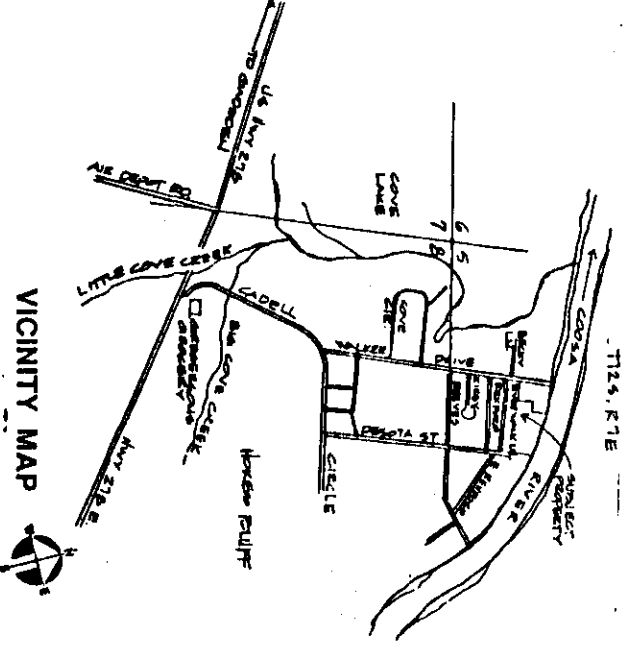
28 July 1994

Robert L. Hoke
Surveyor
City of Hoke's Bluff

Surveyor's Certificate

I, Jerry L. Hoke, the undersigned, do hereby report that I am a professional land surveyor and that I have personally supervised the making of the survey shown on this plat. I am duly licensed as a professional land surveyor in the State of Alabama, my license number being 12345. I have personally made the measurements and computations shown on this plat and I have personally set the iron pins and monuments shown on this plat. I have personally checked the accuracy of the survey and I have personally verified the correctness of the plat. I have personally made the calculations and I have personally verified the correctness of the plat. I have personally made the calculations and I have personally verified the correctness of the plat.

Jerry L. Hoke
Surveyor
3155 CENTRAL AVENUE
MOBILE ALABAMA 36683



SYMBOLS

Water	Power	Gas	Sewer
Existing Iron Pipe	Existing Iron Pin Set	Right of Way	Interval
In Place	Drainage	Contour	Interval

RIVERWALK LANE PLAT

NO.	DESCRIPTION
1	PLAT
2	PLAT
3	PLAT
4	PLAT
5	PLAT
6	PLAT
7	PLAT
8	PLAT
9	PLAT
10	PLAT

