

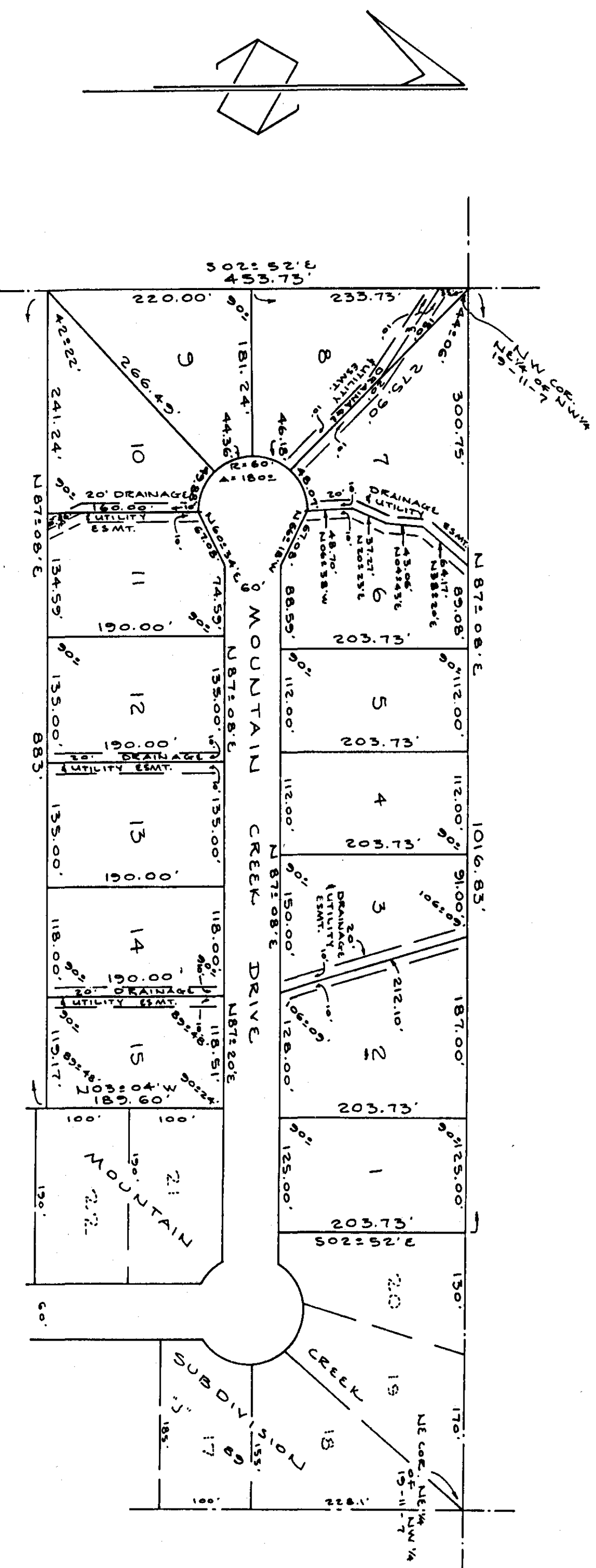
MOUNTAIN CREEK UNIT TWO

STATE OF ALABAMA:
COUNTY OF ETOWAH:
I, THE UNDERSIGNED, DO HEREBY APPROVE THE SUBDIVISION REPRESENTED BY THE FOREGOING PLAT, WITH THE EXCEPTIONS AS NOTED, IF ANY.

FOR: ETOWAH COUNTY ENGINEERING DEPARTMENT
NAME: Robert H. Wagner TITLE: County Engineer DATE: 12/29/88

SCALE: 1"=100'
DATE: DECEMBER 1, 1988
SURVEY # 85098B12
DRAWN BY: BH

See Misc. Page
184 313



THE STATE OF ALABAMA
COUNTY OF ETOWAH
I hereby certify that this instrument was filed in office for record on the 29 day of Dec 1988
at 12:00 o'clock PM, and was duly recorded on the 29 day of Dec 1988
Notary Public
Fees: 5.00
Total: 15.00

STATE OF ALABAMA:
COUNTY OF ETOWAH:
I, ROBERT H. WAGNER, A REGISTERED PROFESSIONAL LAND SURVEYOR OF GADSDEN, AL, HEREBY CERTIFY THAT THE FOREGOING PLAT IS A TRUE AND CORRECT REPRESENTATION OF SURVEY AND SUBDIVISION OF PORTIONS OF THE NE 1/4 OF SECTION 19, TOWNSHIP 11 SOUTH, RANGE 7 EAST OF HUNTSVILLE, MERIDIAN, ETOWAH CO., AL, AS EXECUTED ON THIS THE 1st DAY OF DECEMBER, 1988.

STATE OF ALABAMA:
COUNTY OF ETOWAH:
I, THE UNDERSIGNED, JOE ROGEE LANEY, BEING OWNER OF THE LANDS EMBRACED WITHIN THE FOREGOING PLAT, DO HEREBY CERTIFY, CONFIRM, AND ADOPT THE SAME AS BEING TRUE AND CORRECT. THIS THE 2nd DAY OF DECEMBER, 1988.

STATE OF ALABAMA:
COUNTY OF ETOWAH:
WE, THE UNDERSIGNED, DO HEREBY APPROVE THE SUBDIVISION REPRESENTED BY THE FOREGOING PLAT, WITH THE EXCEPTIONS AS NOTED, IF ANY.
SEE SUBDIVISION FILES AT ETOWAH COUNTY HEALTH DEPARTMENT FOR EXCEPTIONS TO APPROVAL.*

FOR: ETOWAH COUNTY HEALTH DEPARTMENT
NAME: James M. Smith TITLE: Sanitation Chief DATE: 12/15/88

STATE OF ALABAMA:
COUNTY OF ETOWAH:
I, A NOTARY PUBLIC IN AND FOR SAID COUNTY AND STATE, HEREBY CERTIFY THAT JOE ROGEE LANEY, WHOSE NAME IS SIGNED TO THIS DAY, THAT BEING INFORMED OF THE CONTENTS OF THE CONVEYANCE, HE EXECUTED THE SAME VOLUNTARILY, ON THE 2nd DAY OF DECEMBER, 1988.

NAME: Donald W. Bain TITLE: Engineer/Plat DATE: 12/15/88

NOTARY PUBLIC
ARROWHEAD ASSOCIATES
SURVEYORS & LAND PLANNERS
400 DUNCAN STREET
GADSDEN, AL 35901

1 2 3 4 5 6 7 8 9 10 11 12 13 14 15 16 17 18 19 20 21 22 23 24 25 26 27 28 29 30 31 32 33 34 35 36 37 38 39 40 41 42 43 44 45 46 47 48 49 50 51 52 53 54 55 56 57 58 59 60 61 62 63 64 65 66 67 68 69 70 71 72 73 74 75 76 77 78 79 80 81 82 83 84 85 86 87 88 89 90 91 92 93 94 95 96 97 98 99 100