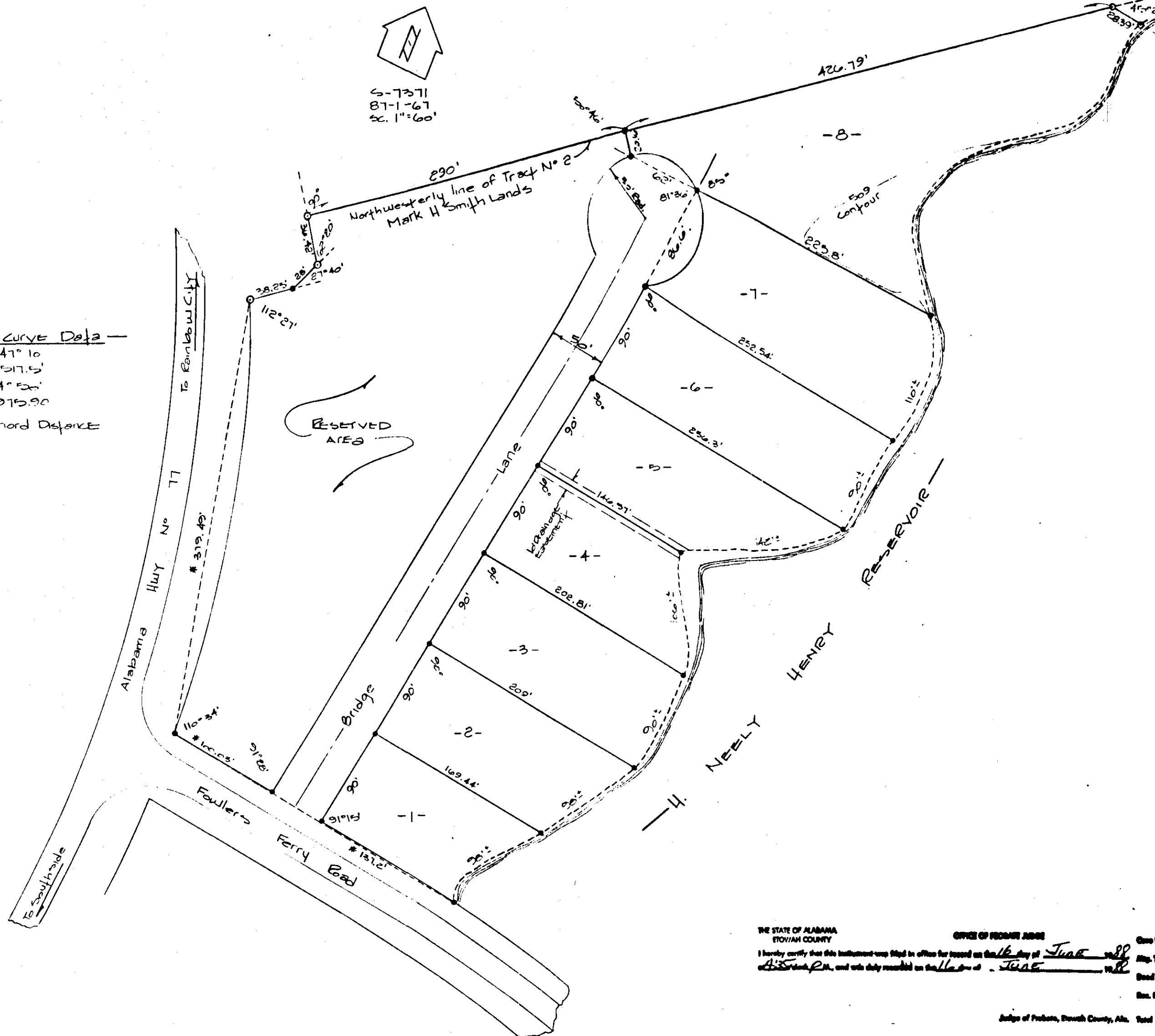


6-7371
87-1-67
SC. 1"=60'

Curve Data
Δ = 47° 10'
T = 517.5'
D = 4" 50"
K = 975.90
* Chord Deflect



THE STATE OF ALABAMA
ETOWAH COUNTY
I hereby certify that this instrument was filed in office for record on the 16th day of June 1988 at 11:00 A.M., and was duly recorded on the 16th day of June 1988.
Office of Public Records
Date Filed
Doc. No.
Judge of Probate, South County, Ala. Total

**BRIDGE ESTATE
SOUTHSIDE, ALABAMA**
A PORTION OF TRACT No. 2
MARK H. SMITH LANDS
C - 321

STATE OF ALABAMA:
COUNTY OF ETOWAH:

I, DOYLE W. BLAIR, A REGISTERED ENGINEER AND LAND SURVEYOR OF GADSDEN, ALABAMA
HEREBY CERTIFY THAT THE FOREGOING IS A TRUE AND CORRECT MAP OR PLAT OF THE LANDS HEREIN SHOWN.
ACCORDING TO MY SURVEY THIS THE 4th DAY OF MAY, 1988
Doyle W. Blair
DOYLE W. BLAIR ALA. REG. No. 4798
JONES, BLAIR, WALDRUP & TUCKER, INC.

STATE OF ALABAMA:
COUNTY OF ETOWAH:

WE GAYLON PIERCE & WIFE BONNIE C. PIERCE, AS OWNERS OF THE LANDS HEREIN SHOWN,
DO HEREBY RATIFY AND ADOPT THE WITHIN MAP AS BEING TRUE AND CORRECT.

THIS THE 16 DAY OF June, 1988
BY: Gaylon Pierce
GAYLON PIERCE
BY: Bonnie C. Pierce
BONNIE C. PIERCE

STATE OF ALABAMA:
COUNTY OF ETOWAH:

I, Bennett Tucker, AS A NOTARY PUBLIC IN AND FOR SAID COUNTY AND STATE, HEREBY
CERTIFY THAT GAYLON PIERCE AND WIFE BONNIE C. PIERCE HAVE SIGNED THE WITHIN MAP,
AND WHO ARE KNOWN TO ME, ACKNOWLEDGED BEFORE ME ON THIS DATE, THAT BEING
INFORMED OF THE CONTENTS, THEY EXECUTED THE SAME VOLUNTARILY ON THE DAY THE
SAME BEARS DATE.

WITNESS MY HAND AND SEAL THIS THE 16th DAY OF June, 1988

MY COMMISSION EXPIRES 3-31-91
Bennett Tucker
A NOTARY PUBLIC

APPROVED: James M. Kelly 6-16-88
ETOWAH CO. HEALTH DEPARTMENT DATE

APPROVED: W. W. K. Brown 6/14/88
MAYOR, TOWN OF SOUTHSIDE DATE

APPROVED: Alton C. Bryant 6-16-88
CHAIRMAN, SOUTHSIDE WATER WORKS & SEWER BOARD DATE

APPROVED: Benny Joe Brown 6-16-88
CHAIRMAN, SOUTHSIDE PLANNING COMMISSION DATE