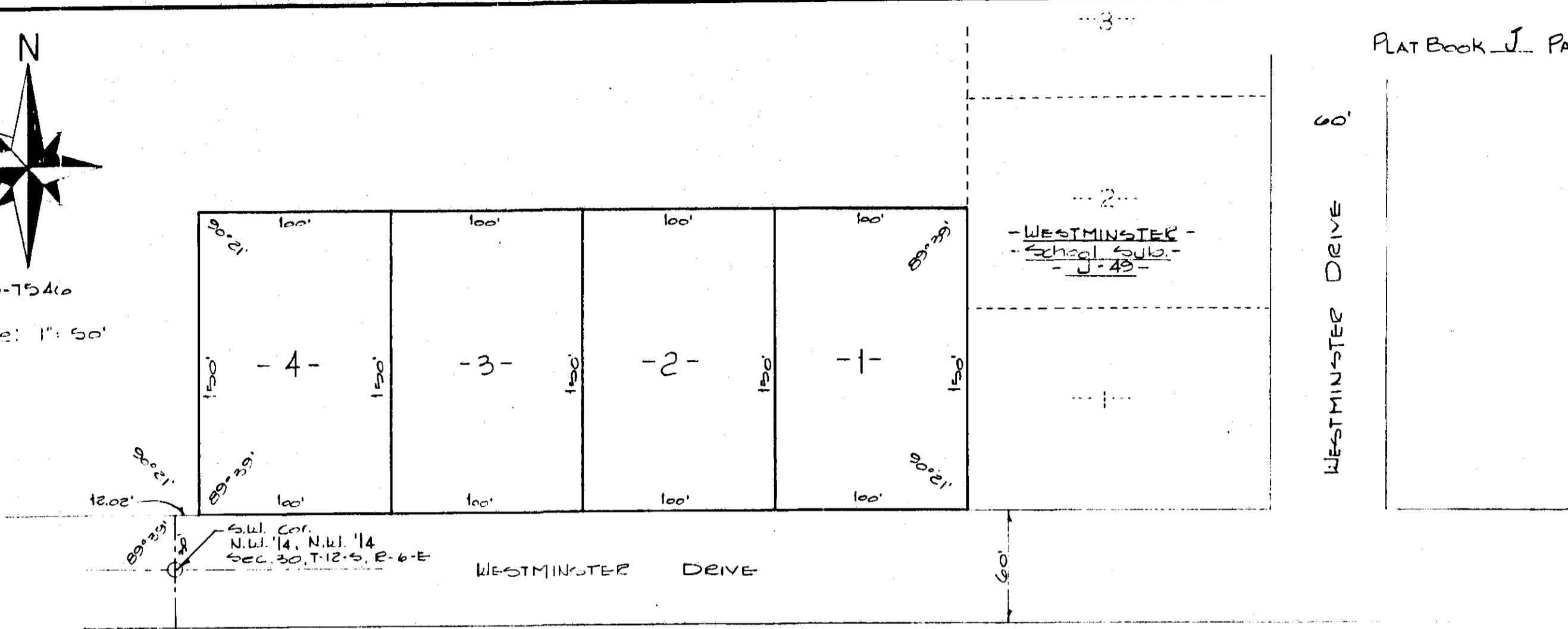


Scale: 1" = 50'



WESTMINSTER 2ND ADDITION

A REARRANGEMENT OF A PORTION OF LOTS 25 & 26 BLOCK 12

GRAND PARK ADDITION

E - 137

A DEVELOPMENT OF LOVEMAN REALTY COMPANY

STATE OF ALABAMA:
COUNTY OF ETOWAH:

I, M.D. WALDRUP JR., A REGISTERED ENGINEER AND LAND SURVEYOR OF GADSDEN, ALABAMA HEREBY CERTIFY THAT THE FOREGOING IS A TRUE AND CORRECT MAP OR PLAT OF THE LANDS HEREIN SHOWN.

ACCORDING TO MY SURVEY THIS THE 7TH DAY OF DEC 19 87

M.D. Waldrup Jr.
M.D. WALDRUP JR., ALA. REG. NO. 100751

STATE OF ALABAMA:
COUNTY OF ETOWAH:

I, E. BARRY LOVEMAN AND JUDI L. LOVEMAN, AS OWNERS OF THE LANDS HEREIN SHOWN DO HEREBY RATIFY AND ADOPT THE WITHIN MAP AS BEING TRUE AND CORRECT.

THIS THE 12 DAY OF DEC 19 87

E. Barry Loveman
BY: E. BARRY LOVEMAN
Judi Loveman
BY: JUDI L. LOVEMAN

APPROVED: *John Watson*
KAINPOLI CITY PLANNING COMMISSION

12-15-87
DATE

APPROVED: *James M. Kelly*
ETOWAH COUNTY HEALTH DEPARTMENT

12-7-87
DATE

STATE OF ALABAMA:
COUNTY OF ETOWAH:

I, BENNETT TUCKER, A NOTARY PUBLIC IN AND FOR SAID COUNTY AND STATE, HEREBY CERTIFY THAT E. BARRY LOVEMAN AND JUDI L. LOVEMAN AS OWNERS, HAVE SIGNED THE WITHIN MAP, AND WHO ARE KNOWN TO ME, ACKNOWLEDGED BEFORE ME ON THIS DATE, THAT BEING INFORMED OF THE CONTENTS, HE AND SHE EXECUTED THE SAME VOLUNTARILY, ON THE DAY THE SAME BEARS DATE.

WITNESS MY HAND AND SEAL THIS THE 4TH DAY OF DEC 19 87

MY COMMISSION EXPIRES MARCH 31, 1991
Bennett Tucker
A NOTARY PUBLIC

OFFICE OF PROBATE JUDGE
I hereby certify that this instrument was filed in office for record on the 22 day of DEC 1987
22 DEC 1987
Paid Tax 10.00
Paid Fee 3.00
Total 13.00

RESTRICTIONS: T15C 172 PAGE 279