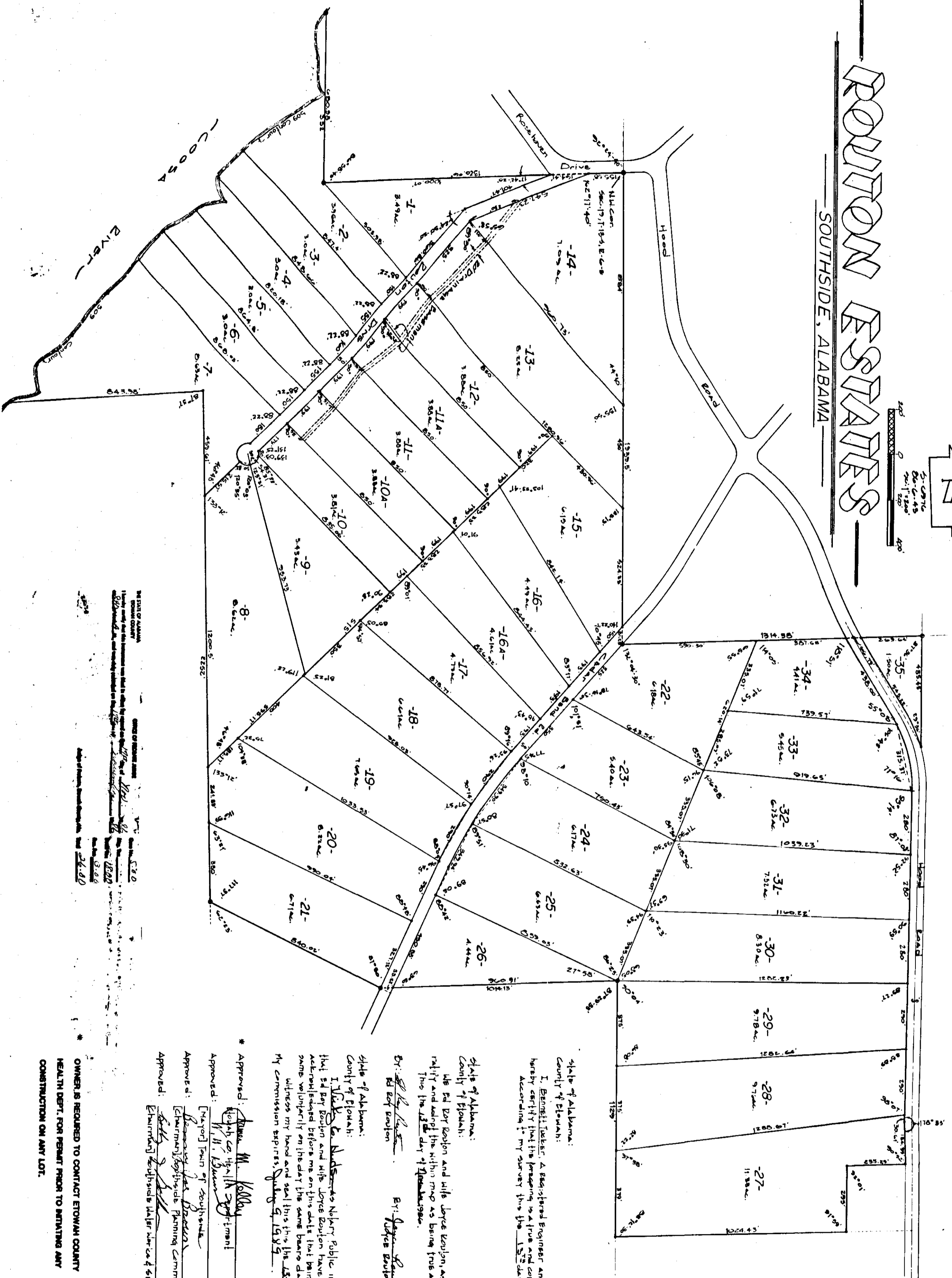
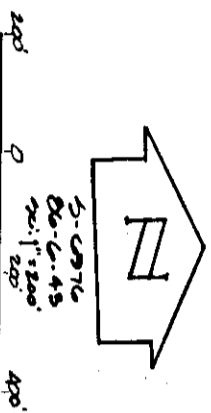


ROULTON ESTATES

SOUTHSIDE, ALABAMA



Plat Book 1 Page 77

State of Alabama:
County of Blount:
I, BRIGGS LUTHER, a Registered Engineer and Land Surveyor of the State of Alabama, hereby certify that the foregoing is a true and correct map or plat of the lands herein shown, according to my survey this 15th day of February, 1986.
Witness my hand and seal this 15th day of February, 1986.
BRIGGS LUTHER, Surveyor
Blount County, Alabama

State of Alabama:
County of Blount:
We Ed Lee Roulton and wife Joyce Roulton, as owners of the lands herein shown, do hereby ratify and confirm the foregoing map as being true and correct.
This 15th day of February, 1986.

State of Alabama:
County of Blount:
I, Ed Lee Roulton, do hereby certify that the foregoing map has been approved by the within map and also hereby certify that the same was approved before me at the same place and date as shown to me, same well known to me, on the day the same were approved by the commission expires July 5, 1988.
Ed Lee Roulton
a Notary Public

Approved: James M. Kelly 11-10-86
Notary Public
Approved: W. H. Brown 11/12/86
Mayor Town of Southside
Approved: Raymond Lee Brown 11-12-86
Chairman, Southside Planning Commission
Approved: Ed Lee Roulton 11-12-86
Chairman, Southside Water Service Board

OWNERS ARE REQUIRED TO CONTACT ETOWAH COUNTY HEALTH DEPT. FOR PERMIT PRIOR TO INITIATING ANY CONSTRUCTION ON ANY LOT.

77