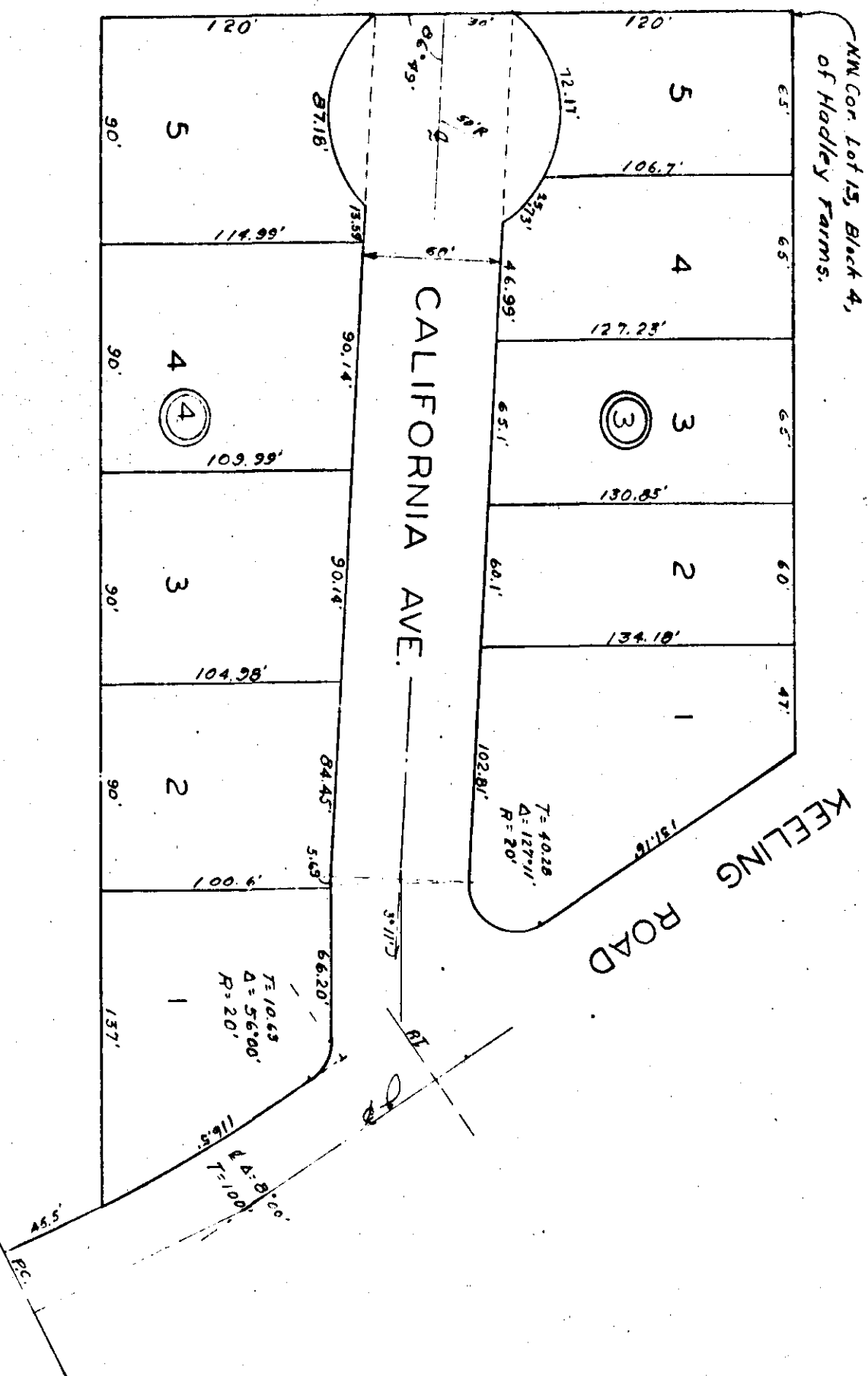


REEVE'S REARRANGEMENT OF
 LOTS 1 THRU 5, BLOCK 3, AND LOTS 1 THRU 7,
 BLOCK 4, OF WALLER'S REARRANGEMENT OF
 PARTS OF LOTS 6 & 7, AND ALL OF LOTS 8 & 13,
 BLOCK 4, HADLEY FARMS, "F" 249.



J-51

State of Alabama
 County of Etowah

I, Robert L. Roberts, a Registered Civil Engineer and Land Surveyor of Etowah, Alabama, hereby certify that the foregoing is a true and correct plat of the lands herein shown.

According to my survey this the 10th day of August, 1983.

Scale: 1" = 50'

Robert L. Roberts
 Reg. #3507

State of Alabama
 County of Etowah

We, the undersigned, William Reeves and Kathryn H. Reeves, being owners of the lands herein shown, do hereby testify, confirm and adopt the same as being true and correct.

This the day of August, 1983.

William Reeves
Kathryn H. Reeves

State of Alabama
 County of Etowah

I, *David Johnson*, a Notary Public in and for said State and County, do hereby certify that on the day and date herein described, and being known to me, acknowledged before me, that they executed the same voluntarily on the day the same bears date.

Given under my hand and seal this the 11 day of August, 1983.

David Johnson
 Notary Public

State of Alabama
 County of Etowah

We, the undersigned, hereby approve the subdivision represented by the foregoing plat, with exceptions as noted, if any:

For: Etowah County Health Department;

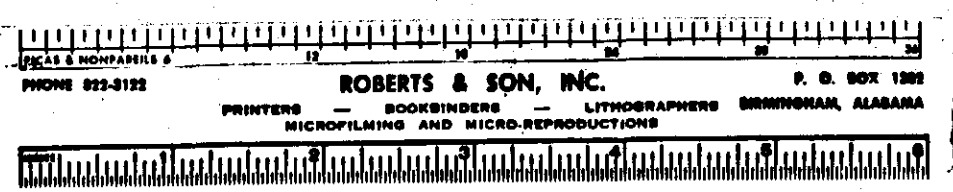
By: _____

For: Engineering Department, City of Gadsden;

Date: Aug. 11, 1983 By: *Joseph E. Williams*

For: City Planning Commission, City of Gadsden;

Date: Aug. 12, 1983 By: *Ronald L. Carr*



THE STATE OF ALABAMA
 COUNTY OF GADSDEN
 CITY OF GADSDEN
 I, *Joseph E. Williams*, Notary Public, do hereby certify that the foregoing is a true and correct copy of the original plat of the lands herein shown, as the same appears on file in my office.
 Witness my hand and seal this 12th day of August, 1983.