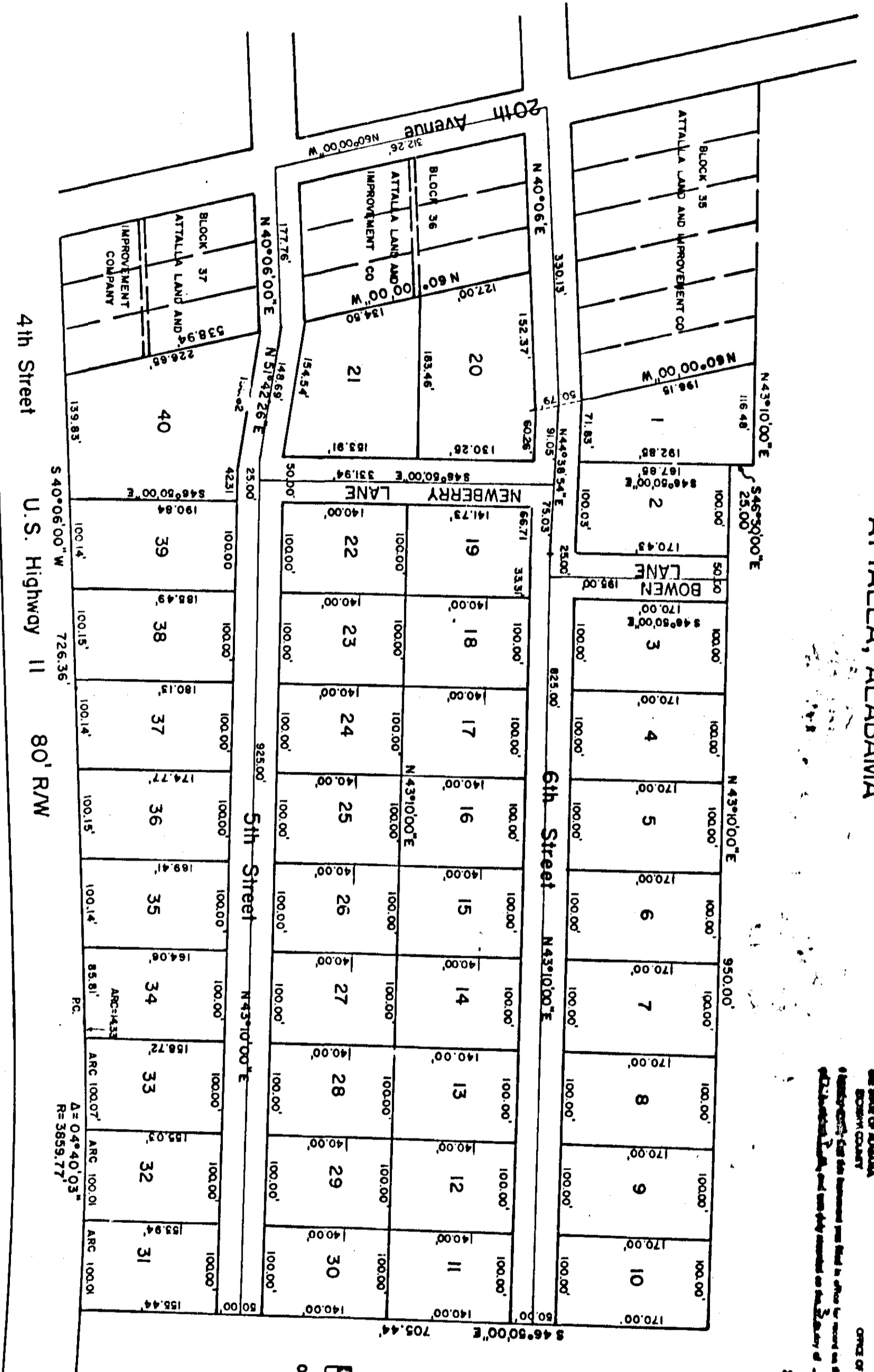


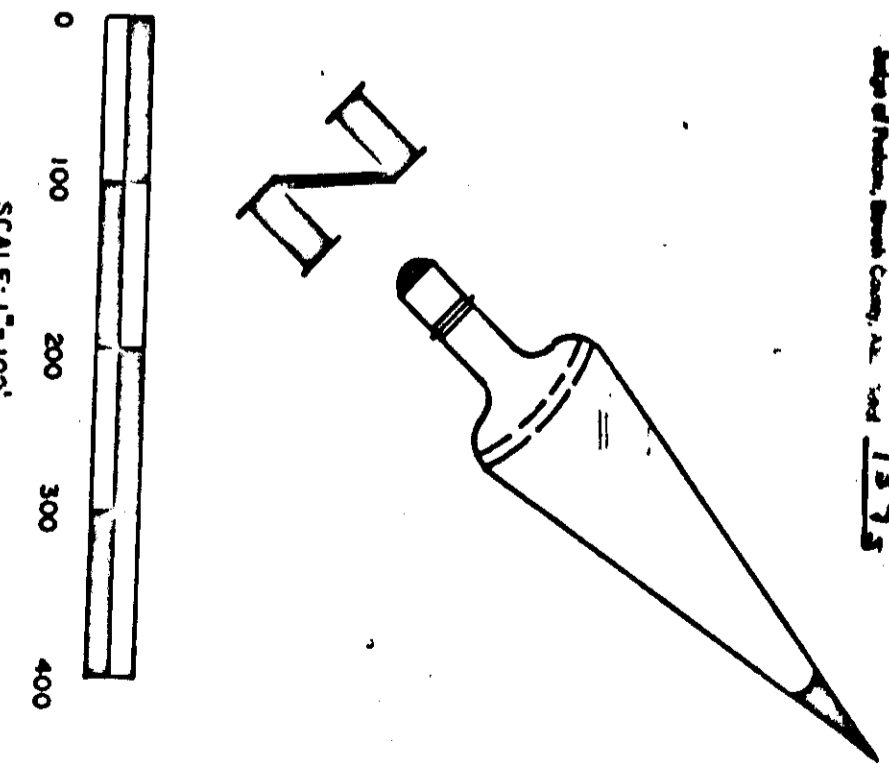
# OAKDALE ESTATES

BEING PORTIONS OF THE N.E. 1/4 OF THE N.W. 1/4,  
AND THE N.W. 1/4 OF THE N.E. 1/4, OF SECTION 35,  
TOWNSHIP II SOUTH, RANGE 5 EAST  
ATTALLA, ALABAMA

D-37



OFFICE OF ATTALLA  
PLANNING COMMISSION  
CERTIFICATE OF APPROVAL FOR RECORDING  
I HEREBY CERTIFY THAT THE SUBDIVISION PLAT FOR OAKDALE ESTATES SUBDIVISION HAS BEEN FOUND TO COMPLY WITH THE SUBDIVISION REGULATIONS FOR ATTALLA, ALABAMA, WITH THE EXCEPTION OF SUCH VARIANCES, IF ANY, AS ARE NOTED IN THE MINUTES OF THE PLANNING COMMISSION, AND THAT IT HAS BEEN APPROVED FOR RECORDING IN THE OFFICE OF THE PROBATE JUDGE OF ETOWAH COUNTY.  
DATE: 10/12/80  
SECRETARY: [Signature]



**OWNER'S CERTIFICATE AND DEDICATION**  
WE, THE UNDERSIGNED, PRESIDENT AND BOARD OF DIRECTORS OF BOWEN-MOBLEY INCORPORATED DO HEREBY CERTIFY THAT WE ARE THE OWNERS OF SAID PORTIONS OF THE N.E. 1/4 OF THE N.W. 1/4, AND THE N.W. 1/4 OF THE N.E. 1/4, OF SECTION 35, TOWNSHIP II SOUTH, RANGE 5 EAST, ATTALLA, ALABAMA, AND THAT THE PLAT REPRESENTS A CORRECT SURVEY OF THE ABOVE DESCRIBED PROPERTY, MADE WITH OUR CONSENT, AND THAT WE HEREBY DEDICATE TO THE PUBLIC USE ALL THE STREETS AS SHOWN ON SAID PLAT. THE EASEMENTS AS SHOWN ON THE PLAT ARE CREATED FOR THE INSTALLATION AND MAINTENANCE OF PUBLIC UTILITIES. WE HEREBY GUARANTEE A CLEAR TITLE TO ALL LANDS SO DEDICATED FROM QUIESCENTS AND OUR HEIRS OR ASSIGNS FOREVER, AND HAVE CAUSED THE SAME TO BE RELEASED FROM ALL ENCUMBRANCES SO THAT THE TITLE IS CLEAR, EXCEPT AS SHOWN IN THE ABSTRACTOR'S CERTIFICATE.

WITNESS MY HAND AND SEAL OF OFFICE THIS 10th DAY OF September, 1980  
PRESIDENT: [Signature]  
WITNESS: [Signature]

**SURVEYOR'S CERTIFICATE**  
I, RALPH L. YOUNG, THE UNDERSIGNED, DO HEREBY CERTIFY THAT I AM A PROFESSIONAL LAND SURVEYOR AND THAT THE ABOVE MAP OF OAKDALE ESTATES CONSISTING OF 1 SHEET, CORRECTLY REPRESENTS A SURVEY MADE UNDER MY SUPERVISION ON THE 10th DAY OF SEPTEMBER, 1980; AND THAT ALL OF THE MONUMENTS SHOWN HEREON ACTUALLY EXIST AND THEIR POSITIONS ARE CORRECTLY SHOWN.  
SIGNATURE: [Signature]  
WITNESS: [Signature]

**CERTIFICATE OF APPROVAL OF THE FINAL PLAT BY THE PLANNING COMMISSION**  
PURSUANT TO THE ATTALLA SUBDIVISION REGULATIONS ALL THE REQUIREMENTS FOR APPROVAL HAVE BEEN FULFILLED. THIS FINAL PLAT WAS GIVEN FINAL APPROVAL BY THE CITY OF ATTALLA PLANNING COMMISSION ON 10/12/80.  
DATE: 10/12/80  
SECRETARY: [Signature]

**CERTIFICATE OF APPROVAL FOR RECORDING**  
I HEREBY CERTIFY THAT THE SUBDIVISION PLAT FOR OAKDALE ESTATES SUBDIVISION HAS BEEN FOUND TO COMPLY WITH THE SUBDIVISION REGULATIONS FOR ATTALLA, ALABAMA, WITH THE EXCEPTION OF SUCH VARIANCES, IF ANY, AS ARE NOTED IN THE MINUTES OF THE PLANNING COMMISSION, AND THAT IT HAS BEEN APPROVED FOR RECORDING IN THE OFFICE OF THE PROBATE JUDGE OF ETOWAH COUNTY.  
DATE: 10/12/80  
SECRETARY: [Signature]

APPROVED  
HEALTH DEPARTMENT

ATTEST  
CITY ENGINEER

PLANNING COMMISSION NOTE:  
CERTAIN INDIVIDUAL LOTS IN THIS SUBDIVISION CAN NOT BE SERVED WITH SANITARY SEWER BY GRANTY FLOW AND WILL REQUIRE INDIVIDUAL PUMPING STATIONS OR OTHER APPROVED MEANS.