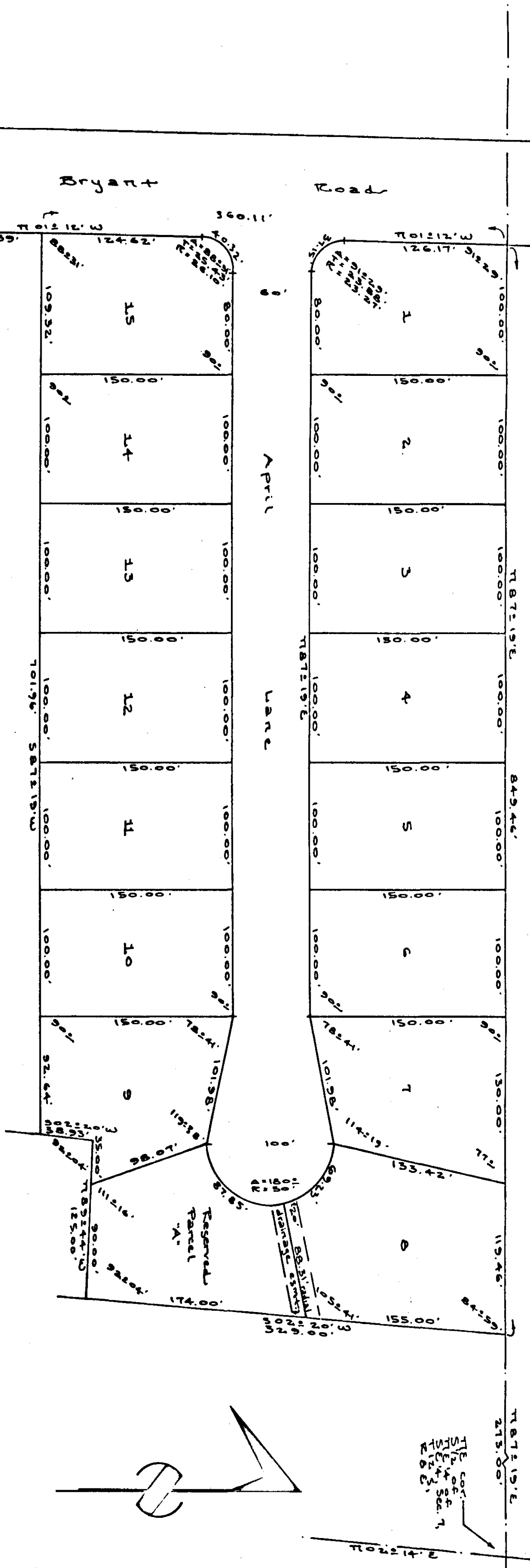


# APRIL MEADOWS



Plat book J  
Page 31

State of Alabama:  
County of Etowah:  
I, Robert H. Wagner, a registered professional land surveyor of Etowah County, Alabama, hereby certify that the foregoing plat is a true and correct representation of survey and subdivision of portions of the SW 1/4 of the NE 1/4 of the SE 1/4, in Section 7, Township 12 South, Range 8 East of the Huntsville Meridian, Etowah County, Alabama, as executed on this the 28th day of July, 1980.

Robert H. Wagner  
Professional Land Surveyor  
No. 12345  
Date: July 28, 1980

State of Alabama:  
County of Etowah:  
I, the undersigned, Doris S. Copeland, Helen A. Copeland, and Susan S. Copeland, being owners of the lands embraced within the foregoing plat, do hereby ratify, confirm, and adopt the same as being true, valid, and correct. This the 28th day of July, 1980.

Doris S. Copeland Doris S. Copeland  
Helen A. Copeland Helen A. Copeland  
Susan S. Copeland Susan S. Copeland

State of Alabama:  
County of Etowah:  
I, Bertha Bridges, a notary public in and for said county and state, hereby certify that Doris S. Copeland, Helen A. Copeland, and Susan S. Copeland, whose names are signed to the foregoing conveyance, and who are known to me, are acknowledged before me on this day, that being informed of the contents of the conveyance, they executed the same voluntarily on the day the same bears date.

Given under my hand and seal this 28th day of July, 1980.  
Bertha Bridges Notary Public

State of Alabama:  
County of Etowah:  
I, the undersigned, do hereby approve the subdivision represented by the foregoing plat, with the exceptions as noted, if any, for Etowah County Health Department.

Robert H. Wagner  
for: Etowah County Health Department  
July 28, 1980

Scale - 1" = 60'  
Date - as July 28  
Survey # 1057912  
Drawn by - bh

Approved Associates  
Surveyors and Land  
Planning Consultants  
400 Dinwiddie Street  
Crested, Alabama

ROBERTS & SON, INC.  
LITHOGRAPHERS  
BIRMINGHAM, ALABAMA