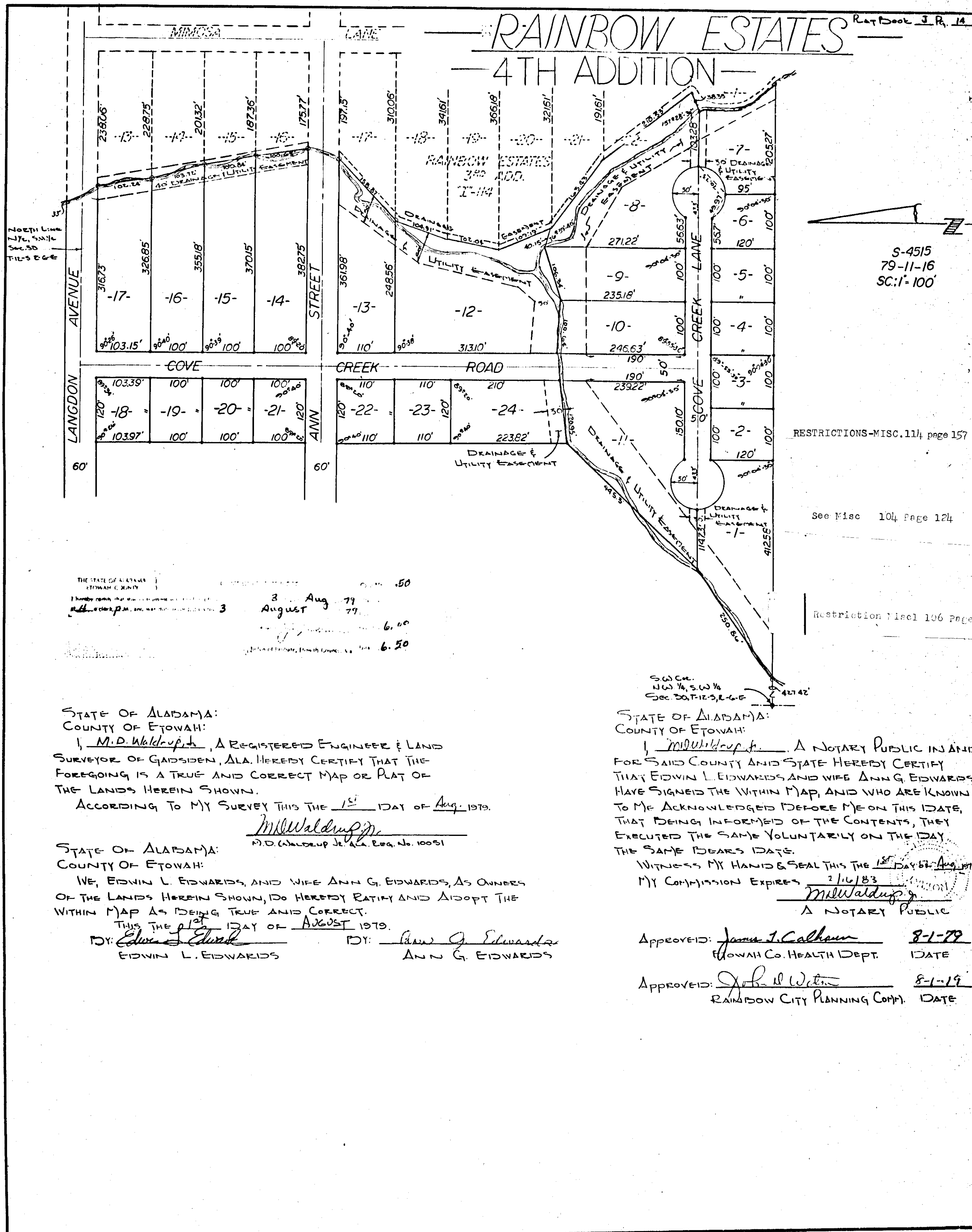


RAINBOW ESTATES

Map Book J.R. 14

4TH ADDITION



S-4515
79-11-16
SC: 1" = 100'

RESTRICTIONS-MISC. 114 page 157

See Misc 104 Page 124

Restriction Misc 106 Page 116

THE STATE OF ALABAMA
ETOWAH COUNTY
I hereby certify that the above is a true and correct map or plat of the lands herein shown.
M.D. Waldrop, Inc. 3 August 79
6.00
6.50

STATE OF ALABAMA:
COUNTY OF ETOWAH:
I, M.D. Waldrop, Jr., A REGISTERED ENGINEER & LAND SURVEYOR OF GAIDSDEN, ALA. HEREBY CERTIFY THAT THE FOREGOING IS A TRUE AND CORRECT MAP OR PLAT OF THE LANDS HEREIN SHOWN.
ACCORDING TO MY SURVEY THIS THE 15th DAY OF Aug. 1979.

M.D. Waldrop, Jr.
M.D. Waldrop, Jr., Ala. Reg. No. 10051

STATE OF ALABAMA:
COUNTY OF ETOWAH:
WE, EDWIN L. EDWARDS, AND WIFE ANN G. EDWARDS, AS OWNERS OF THE LANDS HEREIN SHOWN, DO HEREBY RATIFY AND ADOPT THE WITHIN MAP AS BEING TRUE AND CORRECT.
THIS THE 15th DAY OF AUGUST 1979.
BY: Edwin L. Edwards EDWIN L. EDWARDS
BY: Ann G. Edwards ANN G. EDWARDS

STATE OF ALABAMA:
COUNTY OF ETOWAH:
I, M.D. Waldrop, Jr., A NOTARY PUBLIC IN AND FOR SAID COUNTY AND STATE HEREBY CERTIFY THAT EDWIN L. EDWARDS, AND WIFE ANN G. EDWARDS, HAVE SIGNED THE WITHIN MAP, AND WHO ARE KNOWN TO ME, ACKNOWLEDGED BEFORE ME ON THIS DATE, THAT BEING INFORMED OF THE CONTENTS, THEY EXECUTED THE SAME VOLUNTARILY ON THE DAY THE SAME BEARS DATE.
WITNESS MY HAND & SEAL THIS THE 15th DAY OF Aug. 1979.
MY COMMISSION EXPIRES 2/16/83
M.D. Waldrop, Jr.
A NOTARY PUBLIC

APPROVED: James J. Calhoun 8-1-79
ETOWAH CO. HEALTH DEPT. DATE
APPROVED: John A. Wilton 8-1-79
RAINBOW CITY PLANNING COM. DATE

ROBERTS & SON, INC.
SURVEYING ENGINEERS
1100 1/2 SOUTH AVENUE
ANN ARBOR, MICHIGAN 48106

7