

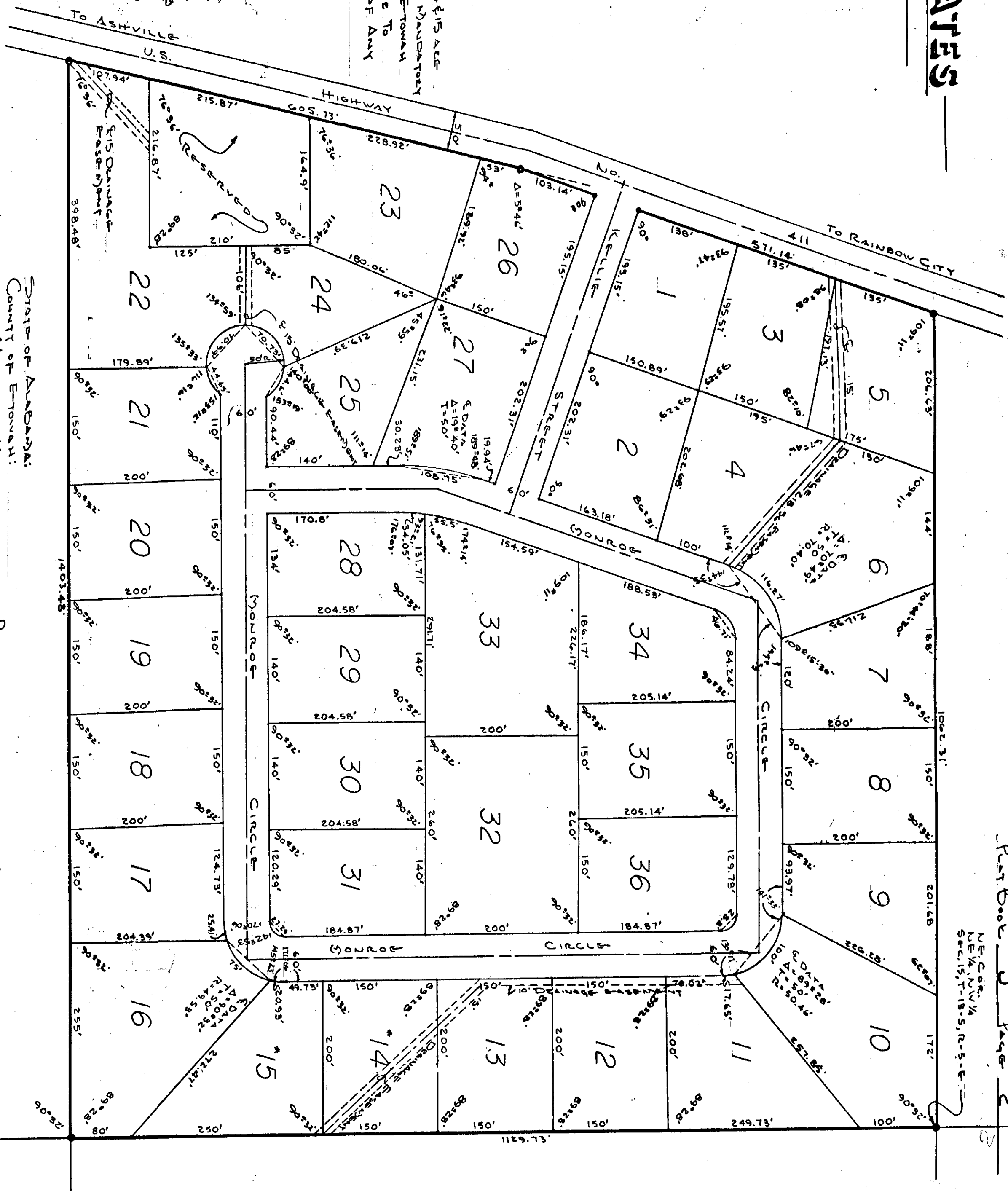
# ROLLING HILLS ESTATES

## RAINBOW CITY, ALA.

RESTRICTIONS - 1190, 101 PAGE 197

S-4075  
78-9-11  
S: 1"=100'

\* Note:  
In This Event That Lot's 14 & 15 are  
Sold Separately It will Be Mandatory  
To Submit a Plat Plan To The Etowah  
Co. Health Department Prior To  
Initiating The Construction of Any  
Building on Either Lot.



State of Alabama:  
County of Etowah:  
I, Bennett Tucker, A Registered Engineer and Land  
Surveyor of Etowah County, Alabama, hereby certify that  
the foregoing is a true and correct map of part of the  
lands herein shown.

Witness My Hand and Seal, This 28<sup>th</sup> Day of Dec 1978.  
*Bennett Tucker*  
Bennett Tucker, A.R.E. No. 5350.

State of Alabama:  
County of Etowah:

We, John E. Silver and wife Dorothy B. Silver, as Owners of  
the lands herein shown, do hereby certify and adopt the within  
map as being true and correct.

This 12<sup>th</sup> Day of Jan 1979.  
*John E. Silver*  
Dr. *Dorothy B. Silver*  
John E. Silver  
Dorothy B. Silver

State of Alabama:  
County of Etowah:  
I, Metcalf Hall, as Notary Public in and for said County  
and State, hereby certify that John E. Silver and wife  
Dorothy B. Silver have signed the within map and release  
known to me, Acknowledged before me on this date, that  
being impressed of the contents, they executed the same  
voluntarily on the date the same bears date.  
Witness My Hand and Seal, This 12<sup>th</sup> Day of Jan 1979.  
By Commission Expires 6/23/80  
*Metcalf Hall*  
A Notary Public

Approved: *Jimmie J. Collins*  
Etowah County  
Health Dept.  
Date 1-18-79

Approved: *John E. Silver*  
Rainbow City  
Planning Comm.  
Date 1-22-79

Approved: *Metcalf Hall*  
City of  
Rainbow City  
Date 1-19-79

Approved: *Metcalf Hall*  
City of  
Rainbow City  
Date 1-19-79

Plat Book "J" Page 2

N.E. Corner  
Sec. 15, T-15-S, R-5-E-2

2