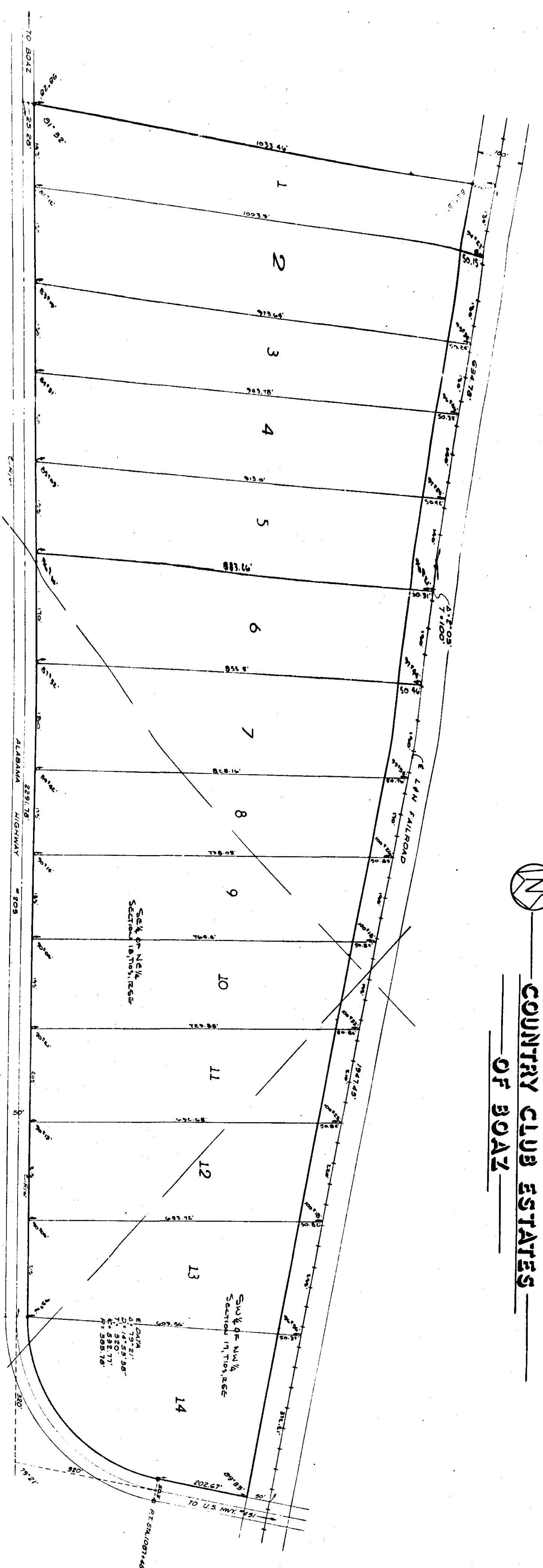


COUNTRY CLUB ESTATES OF BOAZ



State of Alabama
County of Etowah
I, Samuel Tucker, a Registered Professional Land Surveyor, do hereby certify that the above and foregoing plat is a true and correct copy of the original plat as shown to me by Samuel Tucker, the owner of the same, this 25th day of January, 1979.
Surveyed by Samuel Tucker License No. 5300

State of Alabama
County of Etowah
I, Samuel Tucker, a Registered Professional Land Surveyor, do hereby certify that the above and foregoing plat is a true and correct copy of the original plat as shown to me by Samuel Tucker, the owner of the same, this 25th day of January, 1979.
Surveyed by Samuel Tucker License No. 5300

State of Alabama
County of Etowah
I, Samuel Tucker, a Registered Professional Land Surveyor, do hereby certify that the above and foregoing plat is a true and correct copy of the original plat as shown to me by Samuel Tucker, the owner of the same, this 25th day of January, 1979.
Surveyed by Samuel Tucker License No. 5300

Approved: Samuel Tucker License No. 5300
Date: 1-25-79
I, Samuel Tucker, a Registered Professional Land Surveyor, do hereby certify that the above and foregoing plat is a true and correct copy of the original plat as shown to me by Samuel Tucker, the owner of the same, this 25th day of January, 1979.
Surveyed by Samuel Tucker License No. 5300

Approved: Samuel Tucker License No. 5300
Date: 1-25-79
I, Samuel Tucker, a Registered Professional Land Surveyor, do hereby certify that the above and foregoing plat is a true and correct copy of the original plat as shown to me by Samuel Tucker, the owner of the same, this 25th day of January, 1979.
Surveyed by Samuel Tucker License No. 5300

50933
JONES BLAIR WARDLE & TUCKER INC
COMMERCIAL BUILDING
GADSDEN, ALABAMA

