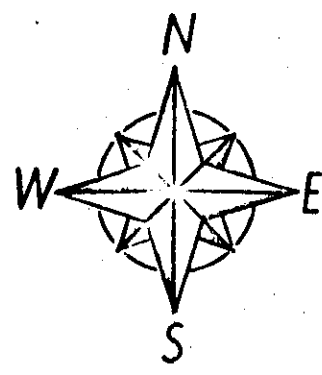
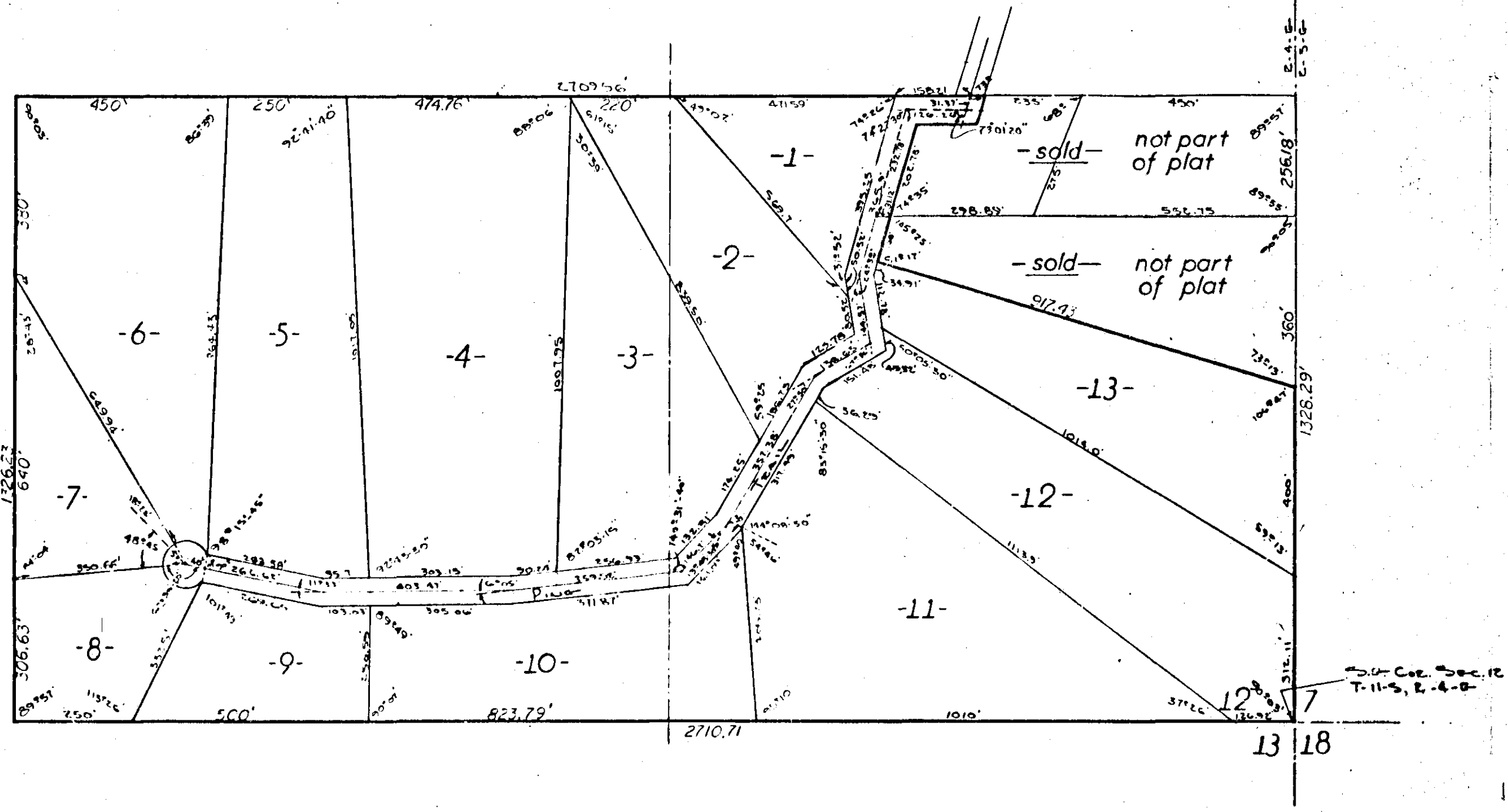


PINE ACRES*



S. 4087
78-4-14
Sec. 17-200



STATE OF ALABAMA
COUNTY OF ETOWAH:
I, BENNETT TUCKER, A REGISTERED ENGINEER AND LAND SURVEYOR OF GEORGETOWN, ALA. HEREBY CERTIFY THAT THE FOREGOING IS A TRUE AND CORRECT MAP OF THE LANDS HEREIN SHOWN.
According to My Survey this the 7th DAY OF DEC 1978.
Bennett Tucker
BENNETT TUCKER, ALA. REG. NO. 5330

STATE OF ALABAMA
COUNTY OF ETOWAH:
THE UNDERSIGNED CEDAR HILLS INC., A CORPORATION, DOES HEREBY RATIFY, CONFIRM AND ADOPT THE FOREGOING PLAT AS BEING TRUE AND CORRECT.
THIS THE 7th DAY OF DECEMBER 1978.
CEDAR HILLS INC.
BY: M. Douglas Housler
M. DOUGLAS HOUSLER - PRES.
ATTESTED BY: Guy F. Jordan
GUY F. JORDAN - SEC. - TREASURER

STATE OF ALABAMA:
COUNTY OF ETOWAH:
I, MARYSA N. HALL, A NOTARY PUBLIC IN AND FOR SAID COUNTY AND STATE, DOES HEREBY CERTIFY THAT M. DOUGLAS HOUSLER, WHOSE NAME AS PRESIDENT OF CEDAR HILLS INC. HAS SIGNED TO THE FOREGOING CONVEYANCE, AND WHO IS KNOWN TO ME, ACKNOWLEDGED BEFORE ME ON THIS DAY, THAT BEING INFORMED OF THE CONTENTS OF THE CONVEYANCE, HE AS SUCH OFFICER AND WITH FULL AUTHORITY, EXECUTED THE SAME VOLUNTARILY, FREE AND AS THE ACT OF SAID CORPORATION ON THE DAY THE SAID DEEDS DATE.
WITNESS MY HAND AND SEAL THIS THE 7th DAY OF DECEMBER 1978.
MY COMMISSION EXPIRES: 8/3/80 Marysa N. Hall
A NOTARY PUBLIC
APPROVED: James J. Colham 12-6-78
ETOWAH CO. HEALTH DEPT. DATE
APPROVED: Marian J. Smith 12-20-78
ETOWAH CO. ENGINEERING DEPT. DATE

STATE OF ALABAMA:
COUNTY OF ETOWAH:
WE, CEDAR HILLS INC., A CORPORATION, AS OWNERS OF THE LANDS HEREIN SHOWN HEREBY ACKNOWLEDGE THAT ETOWAH COUNTY WILL NOT BE RESPONSIBLE FOR PUTTING OR FURNISHING ANY PIPES, CULVERTS, DITCHES OR ANY OTHER DRAINAGE FACILITIES THAT MIGHT BE NECESSARY TO PROPERLY DRAIN THIS ROADWAY.
THIS THE 7th DAY OF DECEMBER 1978.
BY: M. Douglas Housler ATTESTED BY: Guy F. Jordan
M. DOUGLAS HOUSLER - PRES. GUY F. JORDAN - SEC. - TREASURER

* REVISED TO REFLECT CORRECTIONS IN ANGLES AND DISTANCES - LOTS 1 THROUGH 13 - AUGUST 25, 1979

20
20
28
38
50
52.5
57.5

ROBERTS & SON, INC.
SURVEYING AND ENGINEERING
1000 1/2 SOUTH 10TH AVENUE
BIRMINGHAM, ALABAMA 35205