

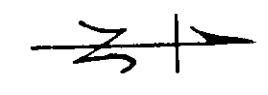
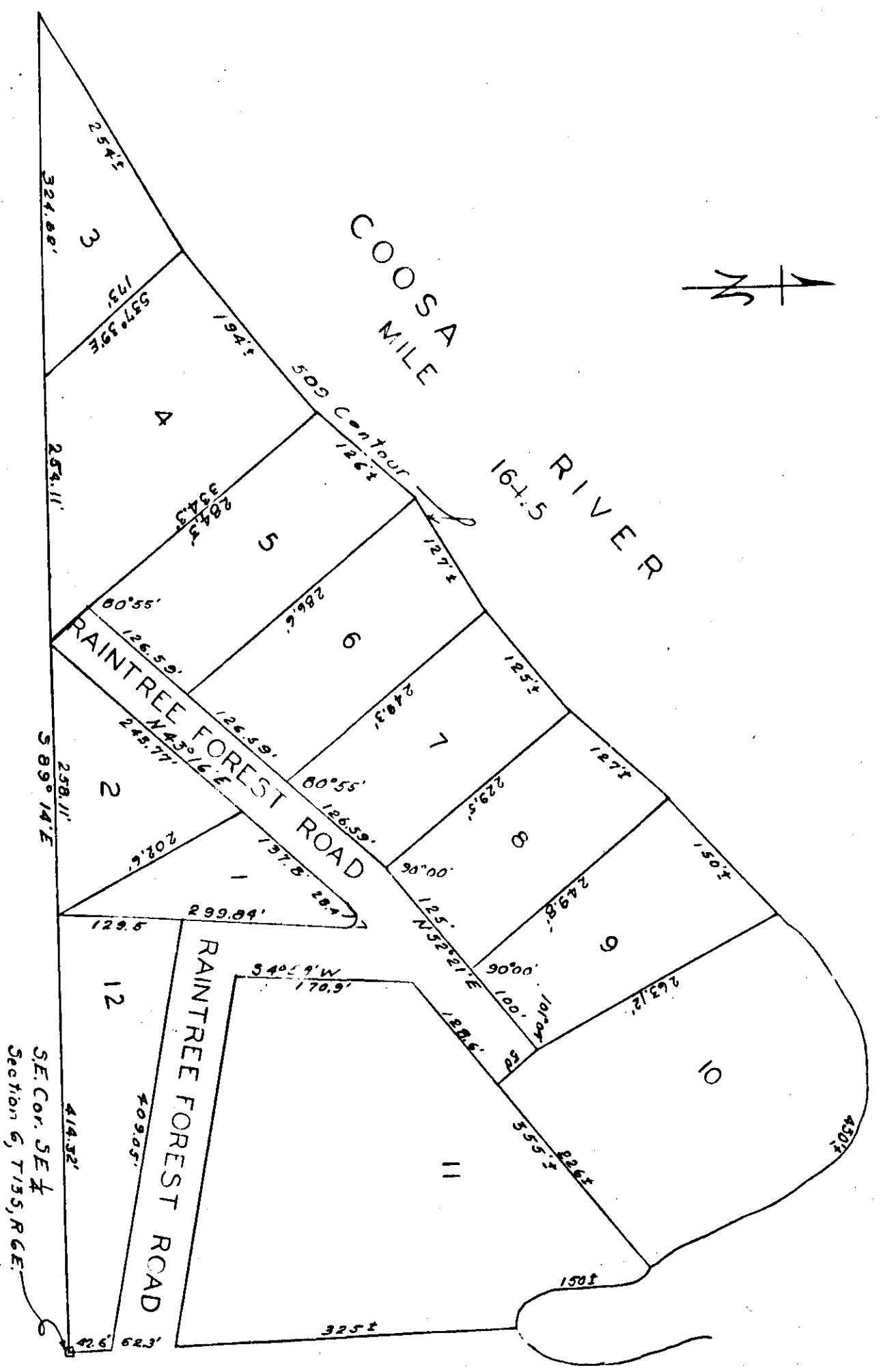
RESTRICTIONS - MISC. 104 PAGE 957

AMENDMENT TO RESTRICTIVE COVENANTS-MISC. 114-p. 219

RAINTREE FOREST

RESUBDIVISION OF BLOCK "A" HODGES HOLLOW

ADOPTION AND PARTICIPATION OF PLAT
SEE MISC. 108 PAGE 950



I, Robert L. Roberts, a Registered Civil Engineer and Land Surveyor of Alabama, do hereby certify that I made a survey of the lands and easements within the foregoing plat, said lands being Sections 6 East 1/4 of Section 6, East of Coosa River, Town of Raintree, County of Etowah, State of Alabama, that the foregoing is a true and correct representation of said survey, this the 16th day of October, 1978.

Scale: 1" = 50'

Robert L. Roberts
Reg. #3507

STATE OF ALABAMA
COUNTY OF ETOWAH

I, the undersigned owner of the land embraced within the foregoing plat, do hereby ratify, confirm and adopt the same as being true and correct.

This the 26 day of October, 1978.

James J. Colburn
(L.S.)

STATE OF ALABAMA
COUNTY OF ETOWAH

I, *Robert L. Roberts*, a Notary Public in and for said County of Etowah, do hereby certify that the above owner, whose name is signed to and whose signature is subscribed to the foregoing instrument, he or she, being informed of the contents of same and being duly advised of this day that, being informed of the contents of same and he executed the same voluntarily on this the 26 day of October, 1978.

Given under my hand and notarial seal, this 26 day of October, 1978.

Robert L. Roberts
NOTARIAL PUBLIC

STATE OF ALABAMA
COUNTY OF ETOWAH

We, the undersigned, hereby approve the subdivision represented by the foregoing plat, with the exceptions as noted, if any.

For the Etowah County Health Department:

James J. Colburn
Date 10-25-78

For the City of Southside:

Beary J. Brown
Date 10-26-78

THE STATE OF ALABAMA
COUNTY OF ETOWAH

1. Number shown in red ink is the number of the original plat from which this plat was prepared.

2. The date shown in red ink is the date of the original plat from which this plat was prepared.

3. The fee shown in red ink is the fee for this plat.

4. The fee shown in red ink is the fee for the original plat from which this plat was prepared.

5. The fee shown in red ink is the fee for the original plat from which this plat was prepared.

6. The fee shown in red ink is the fee for the original plat from which this plat was prepared.

7. The fee shown in red ink is the fee for the original plat from which this plat was prepared.

8. The fee shown in red ink is the fee for the original plat from which this plat was prepared.

9. The fee shown in red ink is the fee for the original plat from which this plat was prepared.

10. The fee shown in red ink is the fee for the original plat from which this plat was prepared.

11. The fee shown in red ink is the fee for the original plat from which this plat was prepared.

12. The fee shown in red ink is the fee for the original plat from which this plat was prepared.

13. The fee shown in red ink is the fee for the original plat from which this plat was prepared.

14. The fee shown in red ink is the fee for the original plat from which this plat was prepared.

15. The fee shown in red ink is the fee for the original plat from which this plat was prepared.

16. The fee shown in red ink is the fee for the original plat from which this plat was prepared.

17. The fee shown in red ink is the fee for the original plat from which this plat was prepared.

18. The fee shown in red ink is the fee for the original plat from which this plat was prepared.

19. The fee shown in red ink is the fee for the original plat from which this plat was prepared.

20. The fee shown in red ink is the fee for the original plat from which this plat was prepared.

21. The fee shown in red ink is the fee for the original plat from which this plat was prepared.

22. The fee shown in red ink is the fee for the original plat from which this plat was prepared.

23. The fee shown in red ink is the fee for the original plat from which this plat was prepared.

24. The fee shown in red ink is the fee for the original plat from which this plat was prepared.

25. The fee shown in red ink is the fee for the original plat from which this plat was prepared.

26. The fee shown in red ink is the fee for the original plat from which this plat was prepared.

27. The fee shown in red ink is the fee for the original plat from which this plat was prepared.

28. The fee shown in red ink is the fee for the original plat from which this plat was prepared.

29. The fee shown in red ink is the fee for the original plat from which this plat was prepared.

30. The fee shown in red ink is the fee for the original plat from which this plat was prepared.

31. The fee shown in red ink is the fee for the original plat from which this plat was prepared.

32. The fee shown in red ink is the fee for the original plat from which this plat was prepared.

33. The fee shown in red ink is the fee for the original plat from which this plat was prepared.

34. The fee shown in red ink is the fee for the original plat from which this plat was prepared.

35. The fee shown in red ink is the fee for the original plat from which this plat was prepared.

36. The fee shown in red ink is the fee for the original plat from which this plat was prepared.

37. The fee shown in red ink is the fee for the original plat from which this plat was prepared.

38. The fee shown in red ink is the fee for the original plat from which this plat was prepared.

39. The fee shown in red ink is the fee for the original plat from which this plat was prepared.

40. The fee shown in red ink is the fee for the original plat from which this plat was prepared.

41. The fee shown in red ink is the fee for the original plat from which this plat was prepared.

42. The fee shown in red ink is the fee for the original plat from which this plat was prepared.

43. The fee shown in red ink is the fee for the original plat from which this plat was prepared.

44. The fee shown in red ink is the fee for the original plat from which this plat was prepared.

45. The fee shown in red ink is the fee for the original plat from which this plat was prepared.

46. The fee shown in red ink is the fee for the original plat from which this plat was prepared.

47. The fee shown in red ink is the fee for the original plat from which this plat was prepared.

48. The fee shown in red ink is the fee for the original plat from which this plat was prepared.

49. The fee shown in red ink is the fee for the original plat from which this plat was prepared.

50. The fee shown in red ink is the fee for the original plat from which this plat was prepared.

ROBERTS & SON, INC.
REGISTERED PROFESSIONAL LAND AND SURVEY ENGINEERS
100 N. W. 10th Ave., Tallahassee, Florida 32301
Tallahassee, Florida 32301