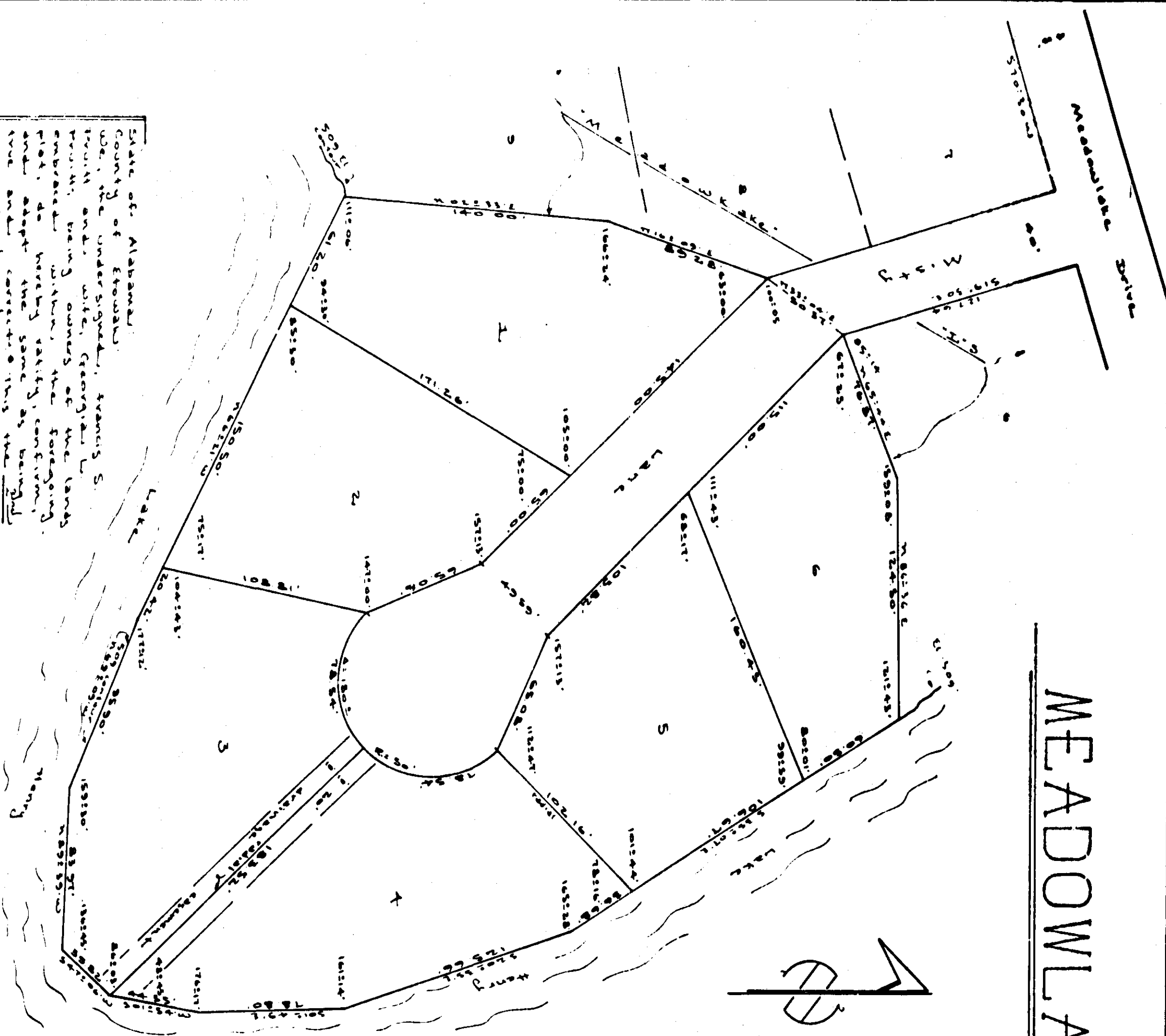


MEADOWLAKE

UNIT TWO



APPROVED FOR RECORDATION
 7 Aug 1978
 State of Alabama
 Department of Revenue
 Bureau of Land Management

State of Alabama
 County of Etowah
 I, Robert H. Wagner, a registered professional land surveyor of the State of Alabama, hereby certify that the foregoing plat is a true and correct representation of survey and subdivision of portions of tracts in Section 15, Township 18 South, Range 6 East of the Northwest Meridian, Etowah County, Alabama, as recorded on this day of August, 1978.

Professional Land Surveyor
 No tag state

State of Alabama
 County of Etowah
 I, the undersigned, do hereby approve the subdivision represented by the foregoing plat with the exceptions as indicated hereon for Etowah County Health Department.

8-3-78
 Etowah County Engineering Department
 Health Officer

State Engineer
 Walter Wright, 1978
 Bureau of Land Management
 Tallahassee, Fla.

Archibald Associates
 Surveyors and Land
 Planning Consultants
 400 Easton Street
 Gadsden, Alabama 35904

State of Alabama
 County of Etowah
 I, the undersigned, Francis S. Pruitt and wife, Georgia L. Pruitt, being owners of the lands described within the foregoing plat do hereby certify, confirm, and adopt certain provisions being set forth in the following day of August, 1978.

Francis S. Pruitt
 Georgia L. Pruitt

Notary in attendance, that Alabama County shall not be responsible for certifying any change of title for this plat within the boundaries of said land.

State of Alabama
 County of Etowah
 I, the undersigned, a notary public in and for said county and State, hereby certify that Francis S. Pruitt and wife, Georgia L. Pruitt, and one are known to me, to the foregoing before me on this day, that being a lawful and legal act, and that the contents of the same were read to the said parties on the day the same were made and that they are the said parties.

Notary Public

ROBERTS & SON, INC.
 Surveyors and Land
 Planning Consultants
 400 Easton Street
 Gadsden, Alabama 35904