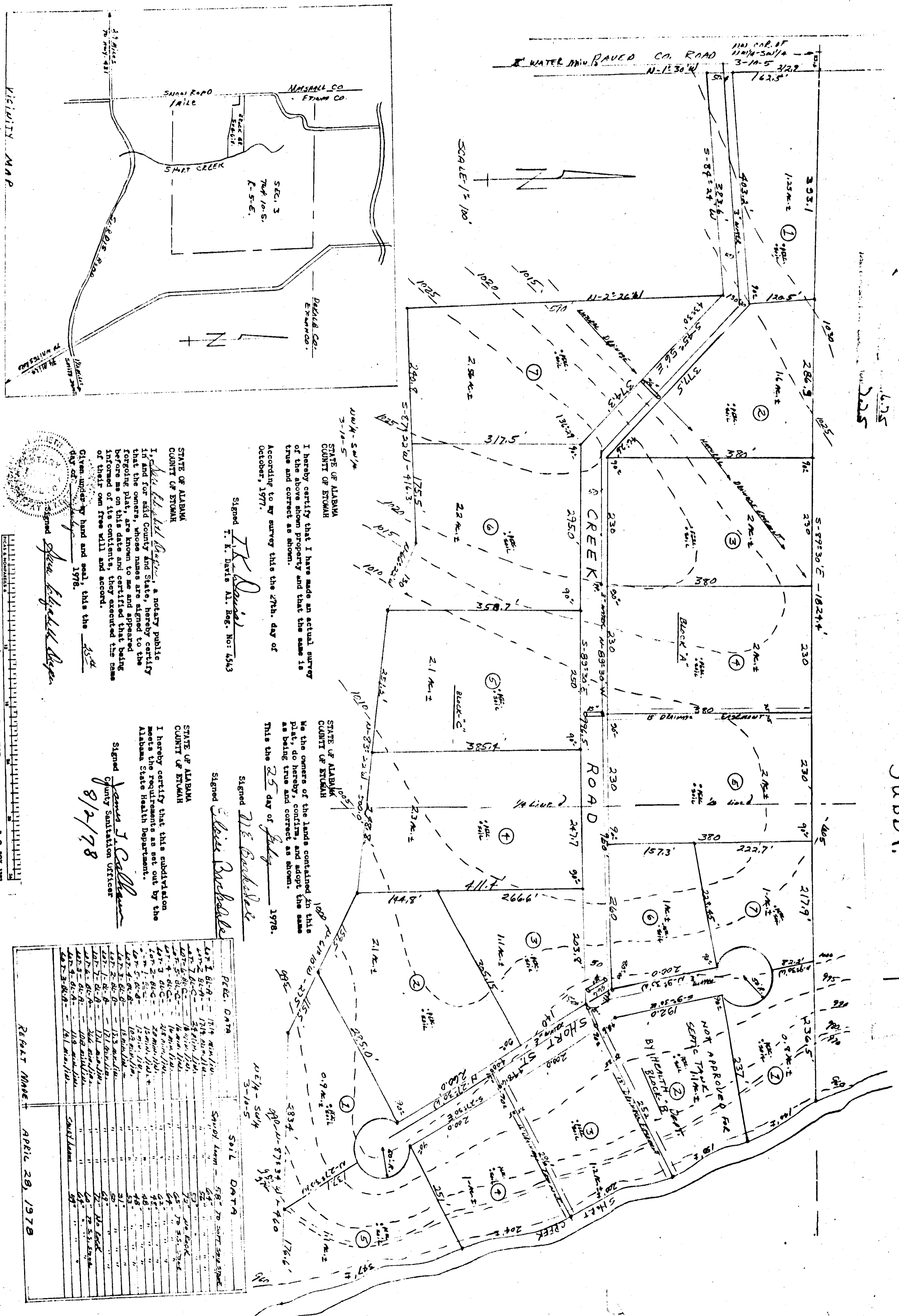


BROCK BRIDGE ESTATES SUBDY.

161



I hereby certify that I have made an actual survey of the above shown property and that the same is true and correct as shown.

According to my survey this the 27th day of October, 1977.

Signed *T. K. Davis*
T. K. Davis A. Reg. No: 4543

I hereby certify that the subdivision of the lands contained in this plat, do hereby, confirm, and adopt the same as being true and correct as shown.

This the 25 day of July 1978.

Signed *W. E. Beckwith*
W. E. Beckwith

I hereby certify that this subdivision meets the requirements as set out by the Alabama State Health Department.

Signed *J. J. Collier*
J. J. Collier
County Sanitation Officer

STATE OF ALABAMA
COUNTY OF ETOWAH

Shirley Elizabeth Rogers, a notary public in and for said County and State, hereby certify that the names, whose names are signed to the foregoing plat, are known to me and appeared before me on this date and certified that being informed of its contents, they executed the same of their own free will and accord.

Given under my hand and seal, this the 25th day of July 1978.

Signed *Shirley Elizabeth Rogers*
Shirley Elizabeth Rogers

PLAT DATA	SOIL DATA
Lot 1 61-A - 1714 sq. ft.	58% TO SOFT SAND
Lot 2 61-B - 1714 sq. ft.	58%
Lot 3 61-C - 1714 sq. ft.	58%
Lot 4 61-D - 1714 sq. ft.	58%
Lot 5 61-E - 1714 sq. ft.	58%
Lot 6 61-F - 1714 sq. ft.	58%
Lot 7 61-G - 1714 sq. ft.	58%
Lot 8 61-H - 1714 sq. ft.	58%
Lot 9 61-I - 1714 sq. ft.	58%
Lot 10 61-J - 1714 sq. ft.	58%
Lot 11 61-K - 1714 sq. ft.	58%
Lot 12 61-L - 1714 sq. ft.	58%
Lot 13 61-M - 1714 sq. ft.	58%
Lot 14 61-N - 1714 sq. ft.	58%
Lot 15 61-O - 1714 sq. ft.	58%
Lot 16 61-P - 1714 sq. ft.	58%
Lot 17 61-Q - 1714 sq. ft.	58%
Lot 18 61-R - 1714 sq. ft.	58%
Lot 19 61-S - 1714 sq. ft.	58%
Lot 20 61-T - 1714 sq. ft.	58%
Lot 21 61-U - 1714 sq. ft.	58%
Lot 22 61-V - 1714 sq. ft.	58%
Lot 23 61-W - 1714 sq. ft.	58%
Lot 24 61-X - 1714 sq. ft.	58%
Lot 25 61-Y - 1714 sq. ft.	58%
Lot 26 61-Z - 1714 sq. ft.	58%
Lot 27 61-AA - 1714 sq. ft.	58%
Lot 28 61-AB - 1714 sq. ft.	58%
Lot 29 61-AC - 1714 sq. ft.	58%
Lot 30 61-AD - 1714 sq. ft.	58%
Lot 31 61-AE - 1714 sq. ft.	58%
Lot 32 61-AF - 1714 sq. ft.	58%
Lot 33 61-AG - 1714 sq. ft.	58%
Lot 34 61-AH - 1714 sq. ft.	58%
Lot 35 61-AI - 1714 sq. ft.	58%
Lot 36 61-AJ - 1714 sq. ft.	58%
Lot 37 61-AK - 1714 sq. ft.	58%
Lot 38 61-AL - 1714 sq. ft.	58%
Lot 39 61-AM - 1714 sq. ft.	58%
Lot 40 61-AN - 1714 sq. ft.	58%
Lot 41 61-AO - 1714 sq. ft.	58%
Lot 42 61-AP - 1714 sq. ft.	58%
Lot 43 61-AQ - 1714 sq. ft.	58%
Lot 44 61-AR - 1714 sq. ft.	58%
Lot 45 61-AS - 1714 sq. ft.	58%
Lot 46 61-AT - 1714 sq. ft.	58%
Lot 47 61-AU - 1714 sq. ft.	58%
Lot 48 61-AV - 1714 sq. ft.	58%
Lot 49 61-AW - 1714 sq. ft.	58%
Lot 50 61-AX - 1714 sq. ft.	58%
Lot 51 61-AY - 1714 sq. ft.	58%
Lot 52 61-AZ - 1714 sq. ft.	58%
Lot 53 61-BA - 1714 sq. ft.	58%
Lot 54 61-BB - 1714 sq. ft.	58%
Lot 55 61-BC - 1714 sq. ft.	58%
Lot 56 61-BD - 1714 sq. ft.	58%
Lot 57 61-BE - 1714 sq. ft.	58%
Lot 58 61-BF - 1714 sq. ft.	58%
Lot 59 61-BG - 1714 sq. ft.	58%
Lot 60 61-BH - 1714 sq. ft.	58%
Lot 61 61-BI - 1714 sq. ft.	58%
Lot 62 61-BJ - 1714 sq. ft.	58%
Lot 63 61-BK - 1714 sq. ft.	58%
Lot 64 61-BL - 1714 sq. ft.	58%
Lot 65 61-BM - 1714 sq. ft.	58%
Lot 66 61-BN - 1714 sq. ft.	58%
Lot 67 61-BO - 1714 sq. ft.	58%
Lot 68 61-BP - 1714 sq. ft.	58%
Lot 69 61-BQ - 1714 sq. ft.	58%
Lot 70 61-BR - 1714 sq. ft.	58%
Lot 71 61-BS - 1714 sq. ft.	58%
Lot 72 61-BT - 1714 sq. ft.	58%
Lot 73 61-BU - 1714 sq. ft.	58%
Lot 74 61-BV - 1714 sq. ft.	58%
Lot 75 61-BW - 1714 sq. ft.	58%
Lot 76 61-BX - 1714 sq. ft.	58%
Lot 77 61-BY - 1714 sq. ft.	58%
Lot 78 61-BZ - 1714 sq. ft.	58%
Lot 79 61-CA - 1714 sq. ft.	58%
Lot 80 61-CB - 1714 sq. ft.	58%
Lot 81 61-CC - 1714 sq. ft.	58%
Lot 82 61-CD - 1714 sq. ft.	58%
Lot 83 61-CE - 1714 sq. ft.	58%
Lot 84 61-CD - 1714 sq. ft.	58%
Lot 85 61-CE - 1714 sq. ft.	58%
Lot 86 61-CD - 1714 sq. ft.	58%
Lot 87 61-CE - 1714 sq. ft.	58%
Lot 88 61-CD - 1714 sq. ft.	58%
Lot 89 61-CE - 1714 sq. ft.	58%
Lot 90 61-CD - 1714 sq. ft.	58%
Lot 91 61-CE - 1714 sq. ft.	58%
Lot 92 61-CD - 1714 sq. ft.	58%
Lot 93 61-CE - 1714 sq. ft.	58%
Lot 94 61-CD - 1714 sq. ft.	58%
Lot 95 61-CE - 1714 sq. ft.	58%
Lot 96 61-CD - 1714 sq. ft.	58%
Lot 97 61-CE - 1714 sq. ft.	58%
Lot 98 61-CD - 1714 sq. ft.	58%
Lot 99 61-CE - 1714 sq. ft.	58%
Lot 100 61-CD - 1714 sq. ft.	58%

REPORT MADE: APRIL 28, 1978



ROBERTS & SON, INC.
PRINTERS
LITHOGRAPHERS
BIRMINGHAM, ALABAMA