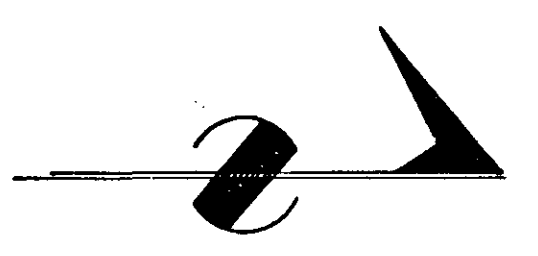
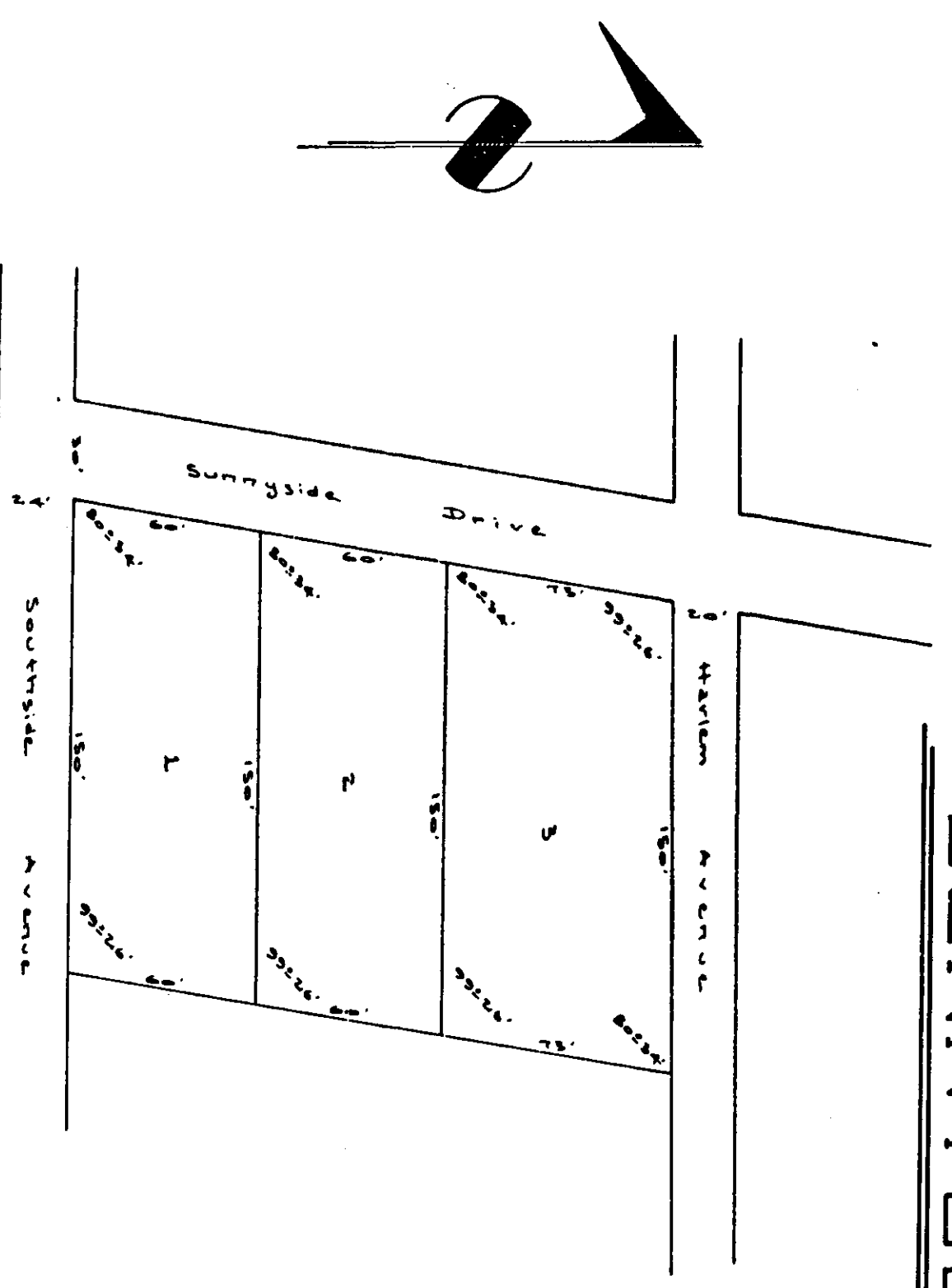


SUNNYSIDE PLACE



State of Alabama:
County of Etowah:
I, the undersigned, J. B. Lewis and wife, Edith E. Lewis, being surveyors of the land embraced within the foregoing plat, as to being true and correct, and after the same this the 11th day of November, 1918.

J. B. Lewis
Edith E. Lewis

State of Alabama:
County of Etowah:
I, Walter H. Hester, a notary public in and for said county and state, having certified that J. B. Lewis and wife, Edith E. Lewis, whose names are signed to the foregoing certificate, are well known to me, personally, and were before me on this day, that being informed of the contents of the foregoing, they returned the same voluntarily on the day the same were presented to me, this the 11th day of November, 1918.

Walter H. Hester, Notary Public

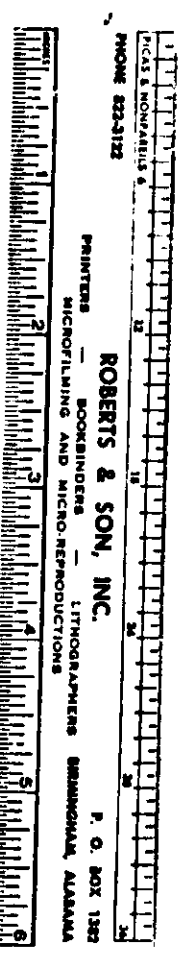
State of Alabama:
County of Etowah:
I, the undersigned, do hereby approve the subdivision represented by the foregoing plat with the exception as noted, if any:
for City of Gadsden, Planning Department
Howell Carr
for City of Gadsden, Engineering Department
Joseph E. Clarke
for Etowah County Health Department
Walter R. Hayes 2nd J.P.
Note - Public Water and Sewerage via City of Gadsden, Alabama.

Scale - 1" = 50'
Drawn by - me
Survey # 61337501

State of Alabama:
County of Etowah:
I, Robert W. Wiggins, a registered professional land surveyor of Etowah, Alabama, hereby certify that the foregoing plat is a true and correct representation of survey and subdivision of Lot #1, in Block #2, of Harrison City Subdivision, as shown in plat book # 61, page 326 and 327, Probate Office, Etowah County, Alabama, as executed on this the 11th day of November, 1918.

Robert W. Wiggins, Ala. Reg. 27624
Professional Land Surveyor
Note - Subdivision boundary surveyed by Wiggins & Associates in April 1917, no marking placed at interior lot corners.

Architectural Associates
Surveyors and Land Planning
Consulting
400 Dunston Street
Gadsden, Alabama



ROBERTS & SON, INC.
SURVEYING AND MAPPING ENGINEERS
BIRMINGHAM, ALABAMA
P. O. BOX 120