

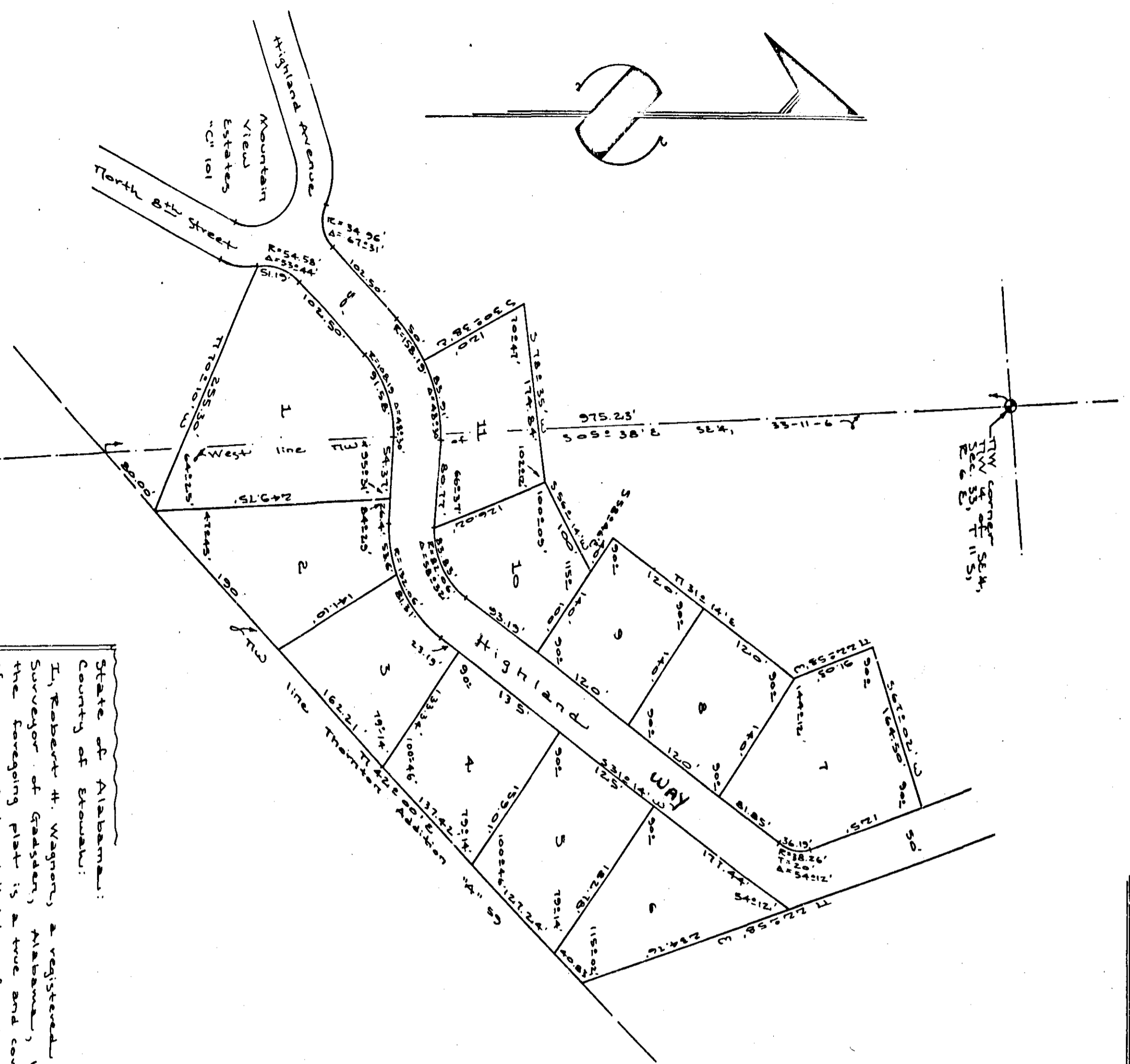
MOUNTAIN VIEW ESTATES

UNIT TWO

Gadsden, Alabama

145

Part of Unit I
Page 144



THE STATE OF ALABAMA
 COUNTY OF GADSDEN
 I, Robert H. Wagner, a registered Professional Land Surveyor in the State of Alabama, do hereby certify that the foregoing plat is a true and correct representation of survey and subdivision of portions of the North Range 6 East of the Huntsville Meridian, Etowah County, Alabama, as executed on this the 15th day of March, 1977.
Robert H. Wagner
 Professional Land Surveyor
 No. Reg. # 4654

State of Alabama:
 County of Etowah:
 I, Robert H. Wagner, a registered Professional Land Surveyor in the State of Alabama, hereby certify that the foregoing plat is a true and correct representation of survey and subdivision of portions of the North Range 6 East of the Huntsville Meridian, Etowah County, Alabama, as executed on this the 15th day of March, 1977.
Robert H. Wagner
 Professional Land Surveyor
 No. Reg. # 4654

State of Alabama:
 County of Etowah:
 We, the undersigned, Andrew A. Chaffin, and wife, Elsie M. Chaffin, being owners of the lands embraced within the foregoing plat, do hereby verify, confirm and adopt the same as being true and correct.
 This on the 15th day of March, 1977.
Andrew A. Chaffin
Elsie M. Chaffin
 Andrew A. Chaffin
 Elsie M. Chaffin

State of Alabama:
 County of Etowah:
 I, Robert H. Wagner, a notary public in and for said county and State, hereby certify that Andrew A. Chaffin and wife, Elsie M. Chaffin, owners, whose names are signed to the foregoing conveyance, and who are known to me, acknowledged before me on this day that being informed of the contents of the conveyance, they executed the same voluntarily on the day the same bears date.
Robert H. Wagner, Notary Public
 My hand and seal this the 15th day of March, 1977.

State of Alabama:
 County of Etowah:
 I, the undersigned, hereby approve the subdivision represented by the foregoing plat, with the exception as noted, if any.
 For: Etowah County Health Department Robert H. Wagner
Robert H. Wagner
 Planning Commission

Scale - 1" = 100'
 Date - January 19, 1977
 Survey # 97517701
 Drawn by - E.H.

ROBERTS & SON, INC.
 LITHOGRAPHERS BIRMINGHAM, ALABAMA
 P. O. BOX 138
 BIRMINGHAM, ALABAMA 35202
 PRINTERS - MICROFILMING AND MICRO REPRODUCTIONS
 PHONE 833-1222

Arrowhead Associates
 Surveyors and Land
 Planning Consultants
 400 Dunbar Street
 Gadsden, Alabama

MS-109