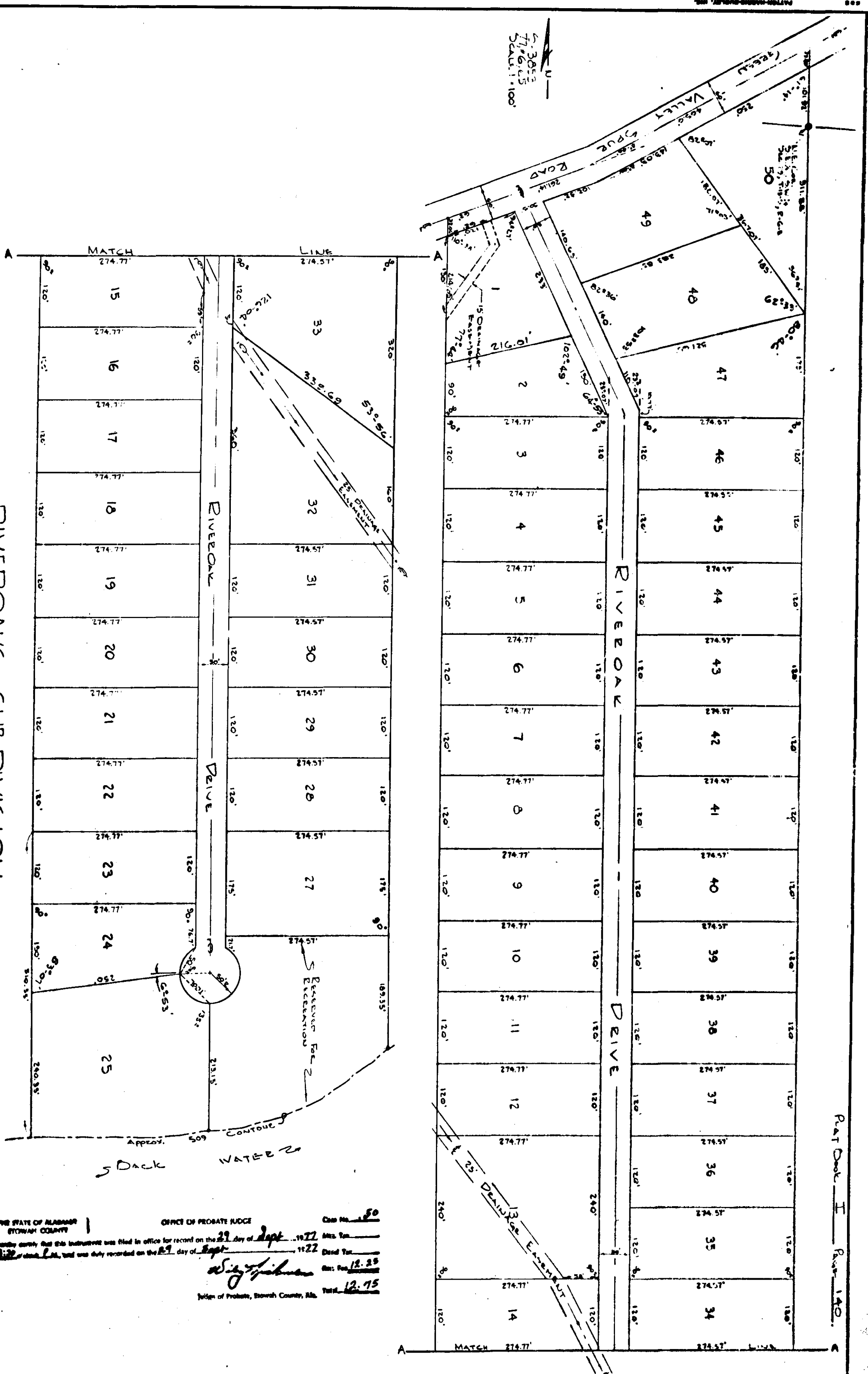


Part One - 140



**RIVEOAKS SUBDIVISION**  
SOUTHSIDE, ALA.

State Of Alabama:  
County Of Etowah:  
I, Walter L. Dueson, a Registered Engineer and Land Surveyor of the State of Alabama, do hereby certify that the foregoing is a true and correct map of Part One of the Riveoaks Subdivision.  
Witness My Hand and Seal this 23rd day of September, 1977.  
Dariusz Tuzek, Ala. Reg. No. 5350

State Of Alabama:  
County Of Etowah:  
I, Walter L. Dueson, a Registered Engineer and Land Surveyor of the State of Alabama, do hereby certify that the foregoing is a true and correct map of Part One of the Riveoaks Subdivision.  
Witness My Hand and Seal this 23rd day of September, 1977.  
Dariusz Tuzek, Ala. Reg. No. 5350

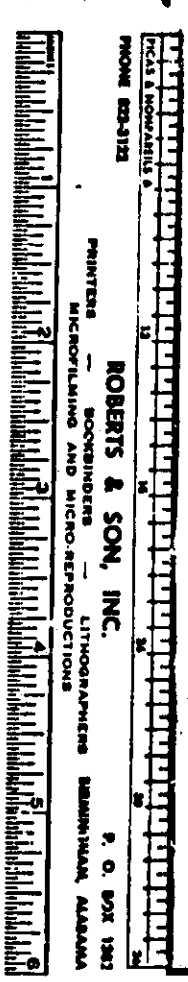
State Of Tennessee:  
County Of Etowah:  
I, Walter L. Dueson, a Registered Engineer and Land Surveyor of the State of Alabama, do hereby certify that the foregoing is a true and correct map of Part One of the Riveoaks Subdivision.  
Witness My Hand and Seal this 23rd day of September, 1977.  
Dariusz Tuzek, Ala. Reg. No. 5350

Approved: Walter L. Dueson  
Etowah County  
Surveyor

Approved: Walter L. Dueson  
Etowah County  
Surveyor

Approved: Walter L. Dueson  
Etowah County  
Surveyor

THE STATE OF ALABAMA  
OFFICE OF PROBATE JUDGE  
ETOWAH COUNTY  
I hereby certify that this instrument was filed in office for record on the 23rd day of Sept. 1977. Attn: Fee \$12.00  
23rd day of Sept. 1977. Attn: Fee \$12.00  
Walter L. Dueson, Surveyor  
Attn: Fee \$12.00



140