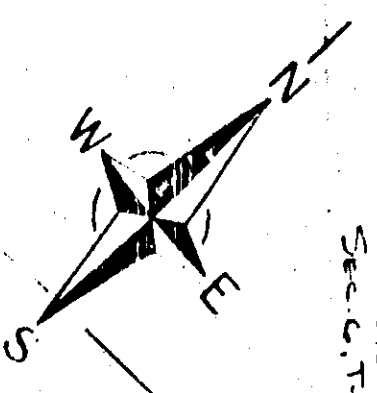


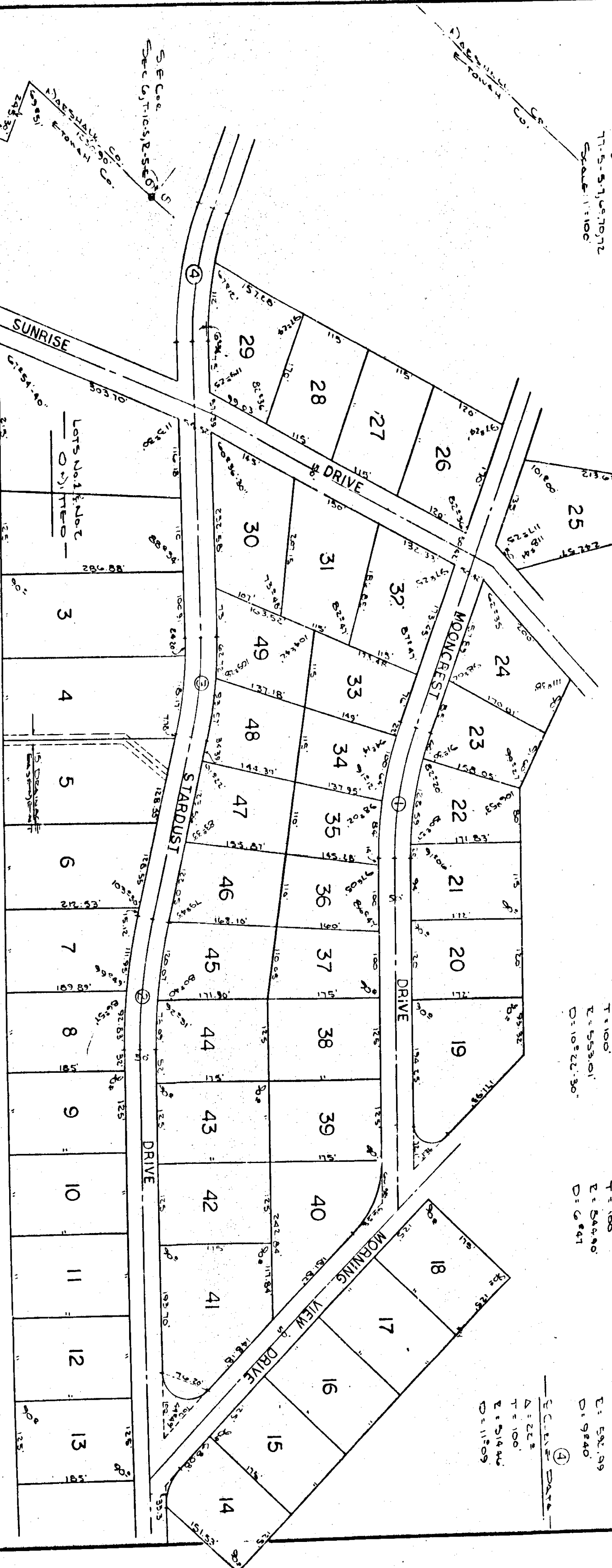
SOLAR ESTATES SARDIS CITY, ALA.

RESTRICTIONS - SEE MISC. 93 PAGE 987



SE 1/4
71-5-31, 70-71
Spartan 11100

①	②	③	④
E-CURVE DATA Δ: 125°30' T: 1100' L: 5530' D: 105°22'30"	E-CURVE DATA Δ: 135°30' T: 1100' L: 5530' D: 6°41'	E-CURVE DATA Δ: 145°25' T: 1175' L: 5921.99' D: 9°40'	E-CURVE DATA Δ: 125° T: 1100' L: 5144' D: 11°59'



STATE OF ALABAMA
 COUNTY OF ETOWAH
 I, Bennett Tucker Alford, a Registered Engineer and Land Surveyor of Etowah County, Alabama, hereby certify that the above is a true and correct map of part of the land herein shown according to my survey this the 22 day of July, 1977.

Bennett Tucker Alford
 Registered Professional Engineer
 No. 5160

STATE OF ALABAMA
 COUNTY OF ETOWAH
 I, William Ellicker and Wife Judie Lucker and Ronald J. Williams and Wife Betty M. Williams, the owners of the land herein shown do hereby ratify and adopt the within map as being true and correct.

WITNESS MY HAND AND SEAL THIS THE 22 DAY OF July, 1977.

William Ellicker
 Registered Professional Engineer
 No. 4352

STATE OF ALABAMA
 COUNTY OF ETOWAH
 I, William Ellicker and Wife Judie Lucker and Ronald J. Williams and Wife Betty M. Williams, the owners of the land herein shown do hereby ratify and adopt the within map as being true and correct.

This the 22 day of July, 1977.

William Ellicker
 Registered Professional Engineer
 No. 4352

Judie Lucker
 Registered Professional Engineer
 No. 4352

APPROVED - Walter R. Long
 Etowah County Health Department
 July 25, 1977

Robert S. Smith
 Etowah County Health Department
 July 25, 1977