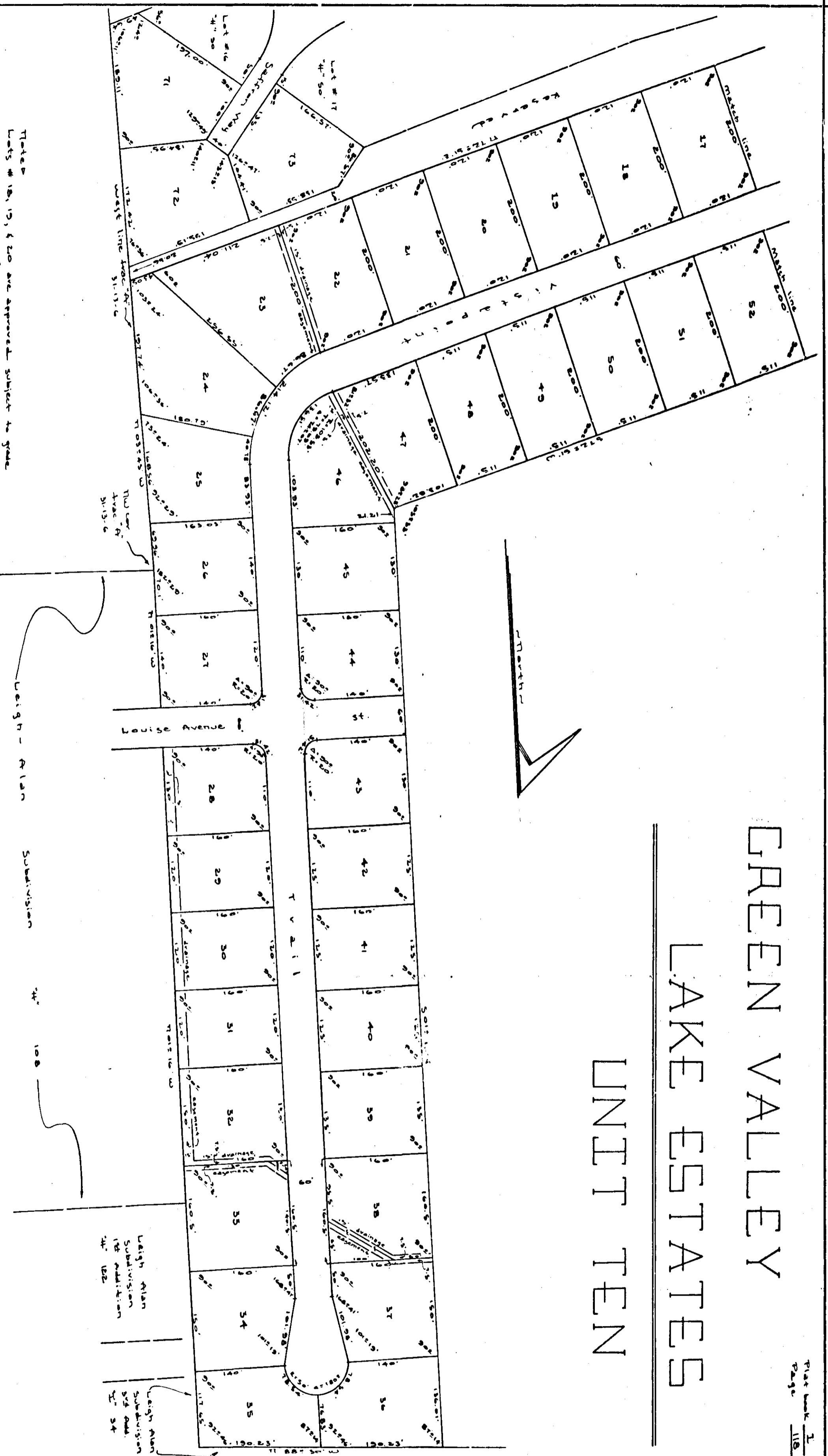


GREEN VALLEY
LAKE ESTATES
UNIT TEN

Plot Book 118
Page 118

118



Notes:
Lots 18, 19, & 20 are approved subject to grade
modification satisfactory to Health Department.

State of Alabama:
County of Etowah:
I, the undersigned, hereby approve the subdivision
represented by the foregoing plat with the exceptions
as noted, if any.
Walter R. Slawley, Health Department
Etowah County Health Department
Walter R. Slawley, 3-11-77
Health & Sanitary Administrative Assistant
Etowah County Engineering Department
William T. Smith, 3/8/77
William T. Smith, Acting County Engineer

State of Alabama:
County of Etowah:
I, Robert H. Madigan, a registered professional land
surveyor of Etowah County, Alabama, hereby certify that the
foregoing plat is a true and correct representation of
survey and subdivision of portions of tracts 17, 18, 19,
20, 21, 22, 23, 24, 25, 26, 27, 28, 29, 30, 31, 32, 33, 34, and
35 in Section 31, all in Township 15 South, Range 6 East of
the Huntsville Meridian, Etowah County, Alabama as returned
on this 12th day of February, 1976.
Robert H. Madigan
Professional Land Surveyor #244

Sheet 2 of 2

ROBERTS & SON, INC.
LITHOGRAPHERS
MICROFILMING AND MICRO REPRODUCTIONS
F O BOX 100
GADSDEN, ALABAMA 35901

Arrowhead Associates
Surveyors and Land
Planning Consultants
Gadsden, Alabama 35901