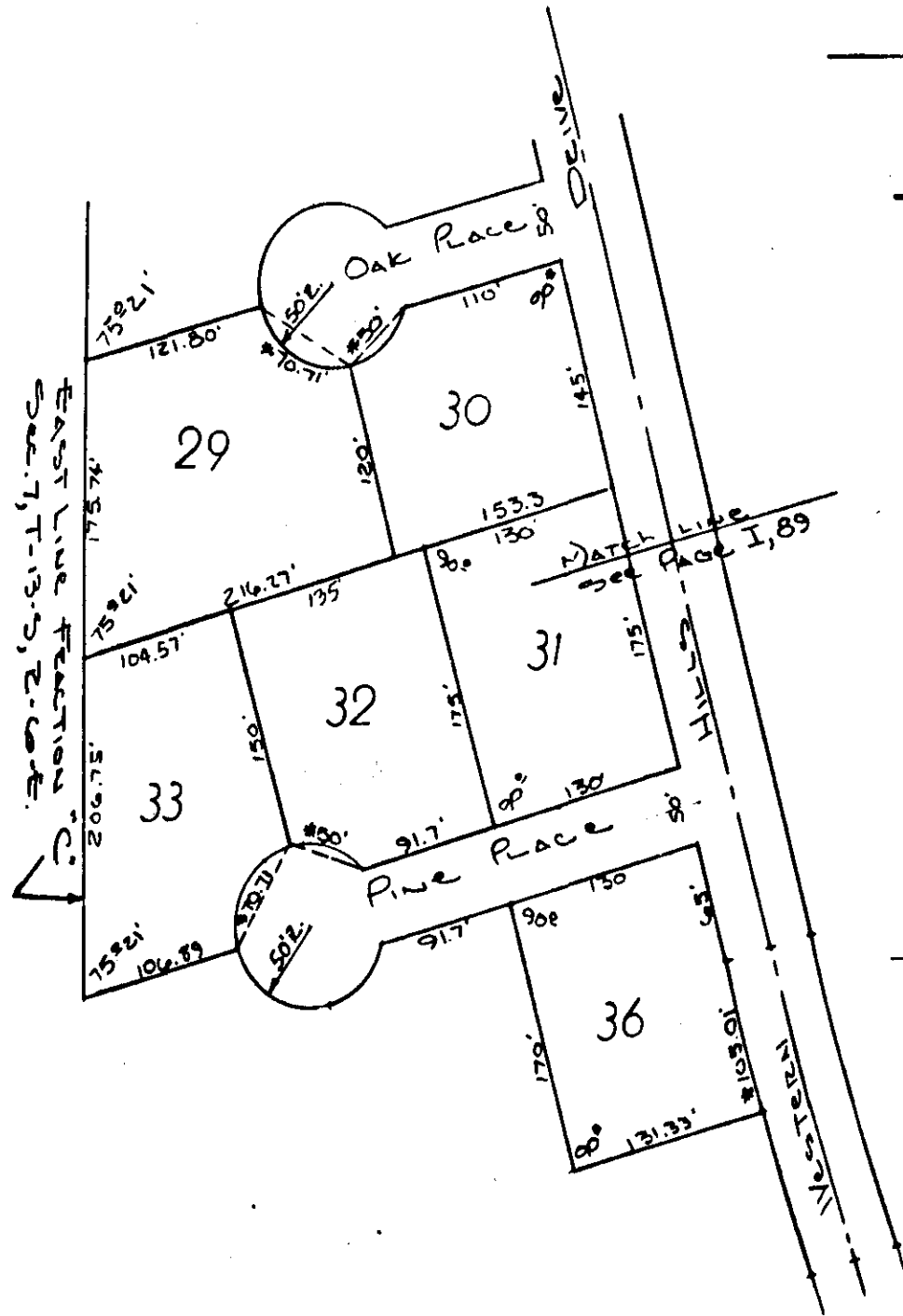


WESTERN HILLS SUB.

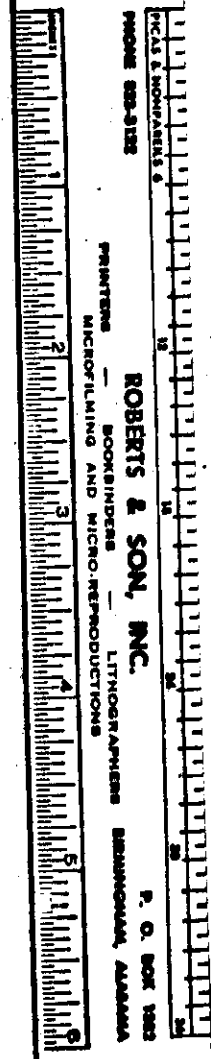
1ST ADDITION

PART - A

S-3013
75-5-2
Scale: 1"=100'



Curve Data
 $\Delta = 27.50^\circ$
 $T = 100'$
 $R = 3905.68$



ROBERTS & SON, INC.
 LITHOGRAPHERS
 1001 N. 10th St., Oklahoma City, Oklahoma

THE STATE OF OKLAHOMA)
 COUNTY OF DEWELP)
 I, Notary Public, do hereby certify that the within and foregoing plat of the Western Hills Subdivision, First Addition, Part A, is a true and correct copy of the original filed in my office on this 14th day of May, 1935.
 My Comm. Expires March 22, 1936.
 Notary Public, Dewelap County, Okla. Exp. 10-25-35

RESTRICTIONS MISC. BOOK 89 PAGE 269

Sheet 2 of 2

S-3013