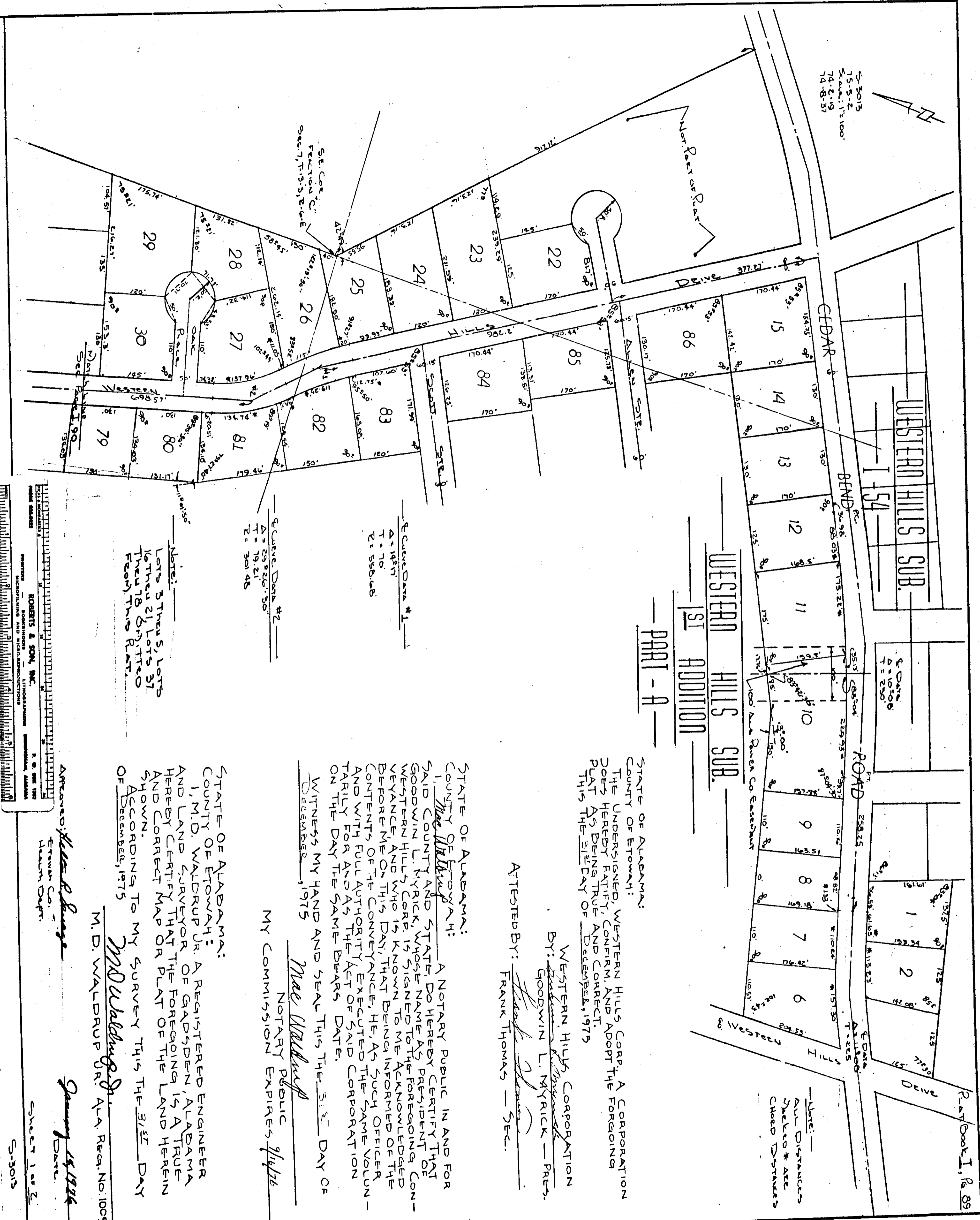


PATTON-MANN-BUDLEY, INC.



WESTERN HILLS SUB.
1st ADDITION
PART - A

STATE OF ALABAMA:
COUNTY OF ETOWAH:
The undersigned, WESTERN HILLS CORP., A CORPORATION DOES HEREBY RATIFY, CONFIRM, AND ADOPT THE FOREGOING PLAT AS BEING TRUE AND CORRECT.
THIS, THE 31st DAY OF DECEMBER, 1975

WESTERN HILLS CORPORATION
By: Frank Thomas
GOODWIN L. MYRICK — PRES.
ATTESTED BY: Frank Thomas — SEC.

STATE OF ALABAMA:
COUNTY OF ETOWAH:
I, Mae Walburg, A Notary Public in and for said County and State, do hereby certify that Goodwin L. Myrick, whose name is subscribed to the foregoing plat of Western Hills Corp. is signed to the acknowledged conveyance, and who is known to me as being informed of the contents of the conveyance, he, as such officer and with full authority executed the same voluntarily for and as the fact of said corporation on the day the same bears date.
WITNESS MY HAND AND SEAL THIS 31st DAY OF DECEMBER, 1975
Mae Walburg
NOTARY PUBLIC
MY COMMISSION EXPIRES 1976

STATE OF ALABAMA:
COUNTY OF ETOWAH:
I, M.D. WALDRUP JR., A REGISTERED ENGINEER AND LAND SURVEYOR OF GADSDEN, ALABAMA HEREBY CERTIFY THAT THE FOREGOING IS A TRUE AND CORRECT MAP OR PLAT OF THE LAND HEREIN SHOWN.
ACCORDING TO MY SURVEY THIS THE 31st DAY OF DECEMBER, 1975
M.D. Waldrup Jr.
M.D. WALDRUP JR., ALA REG. NO. 10051

APPROVED: Mae Walburg
Etowah Co.
Hannah Dapfr.
SHEET 1 OF 2
S-3013

DATE: January 19, 1976