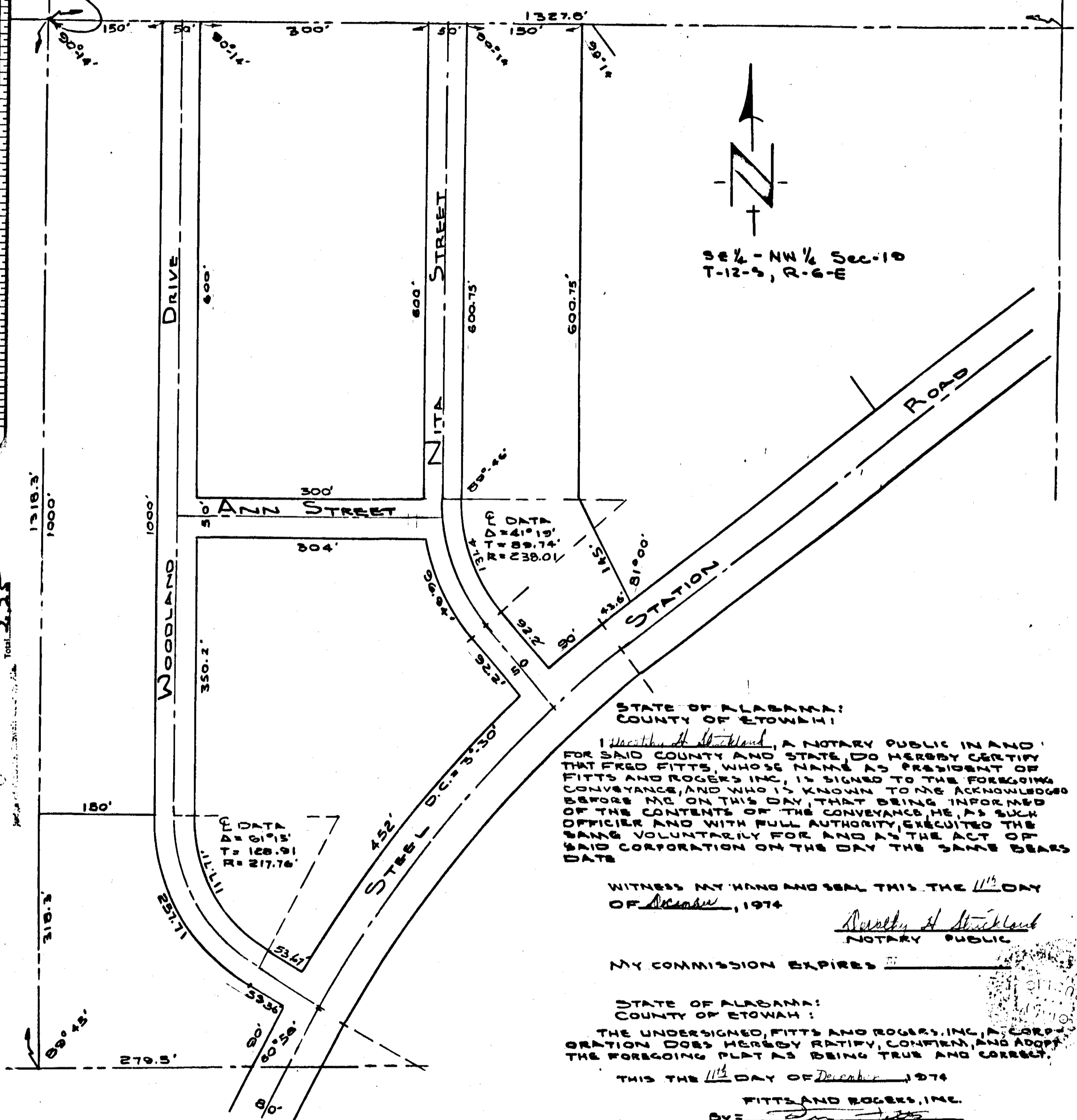


J-65

WOODLAND DRIVE, NITA STREET & ANN STREET PLAT
RAINBOW CITY, ALA

N.W. COR. S.E. 1/4 - NW 1/4
SEC. 19, T-12-S, R-6-E



N
3/4 - NW 1/4 Sec. 19
T-12-S, R-6-E

ROBERTS & SON, INC.
LITHOGRAPHERS
PRINTERS
MICROFILMING AND MICRO REPRODUCTION
SERIALS UNIT

I hereby certify that this instrument was filed in office for record on this day of December, 1974, and was duly recorded on this day of December, 1974.

STATE OF ALABAMA:
COUNTY OF ETOWAH:

I, BENNETT TUCKER, A REGISTERED ENGINEER AND LAND SURVEYOR OF GADSDEN, ALABAMA, HEREBY CERTIFY THAT THE FOREGOING IS A TRUE AND CORRECT MAP OR PLAT OF THE LAND HEREBIN SHOWN

Bennett Tucker
BENNETT TUCKER-ALA. REG. 5350

STATE OF ALABAMA:
COUNTY OF ETOWAH:
I, *Wesley A. Stickland*, A NOTARY PUBLIC IN AND FOR SAID COUNTY AND STATE, DO HEREBY CERTIFY THAT FRED FITTS, WHOSE NAME AS PRESIDENT OF FITTS AND ROGERS, INC., IS SIGNED TO THE FOREGOING CONVEYANCE, AND WHO IS KNOWN TO ME, ACKNOWLEDGED BEFORE ME ON THIS DAY, THAT BEING INFORMED OF THE CONTENTS OF THE CONVEYANCE HE, AS SUCH OFFICER AND WITH FULL AUTHORITY, EXECUTED THE SAME VOLUNTARILY FOR AND AS THE ACT OF SAID CORPORATION ON THE DAY THE SAME BEARS DATE

WITNESS MY HAND AND SEAL THIS THE 11th DAY OF December, 1974

Wesley A. Stickland
NOTARY PUBLIC

MY COMMISSION EXPIRES _____

STATE OF ALABAMA:
COUNTY OF ETOWAH:
THE UNDERSIGNED, FITTS AND ROGERS, INC., A CORPORATION DOES HEREBY RATIFY, CONFIRM, AND ADOPT THE FOREGOING PLAT AS BEING TRUE AND CORRECT.

THIS THE 11th DAY OF December, 1974

FITTS AND ROGERS, INC.
BY: *Fred Fitts*
FRED FITTS, PRESIDENT
ATTESTED BY: *Billy Rogers*
BILLY ROGERS, SEC., TREAS.

MAP SHOWING WOODLAND DRIVE, NITA STREET, AND ANN STREET IN RAINBOW CITY - RECORDED FOR STREET PURPOSES ONLY

TROY E. WATFORD & ASSOCIATES, INC.
CONSULTING ENGINEERS
GADSDEN, ALABAMA

RAINBOW CITY, ALABAMA

— STREET LOCATION MAP —

DRAWN W. KILLIAN	APPROVED B.T.	SCALE 1" = 100'	DATE NOV 1974
---------------------	------------------	--------------------	------------------

65