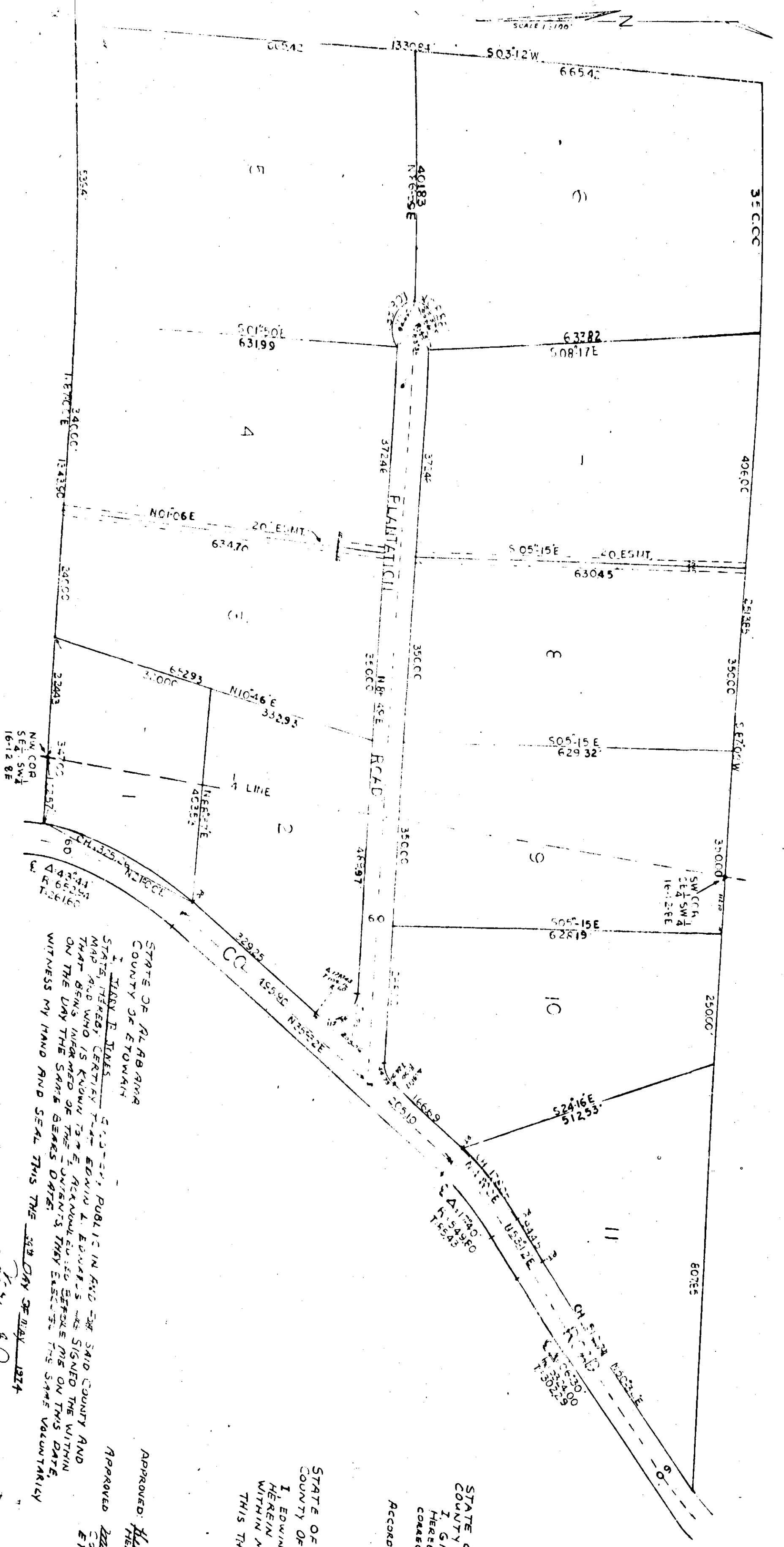


57

I-57

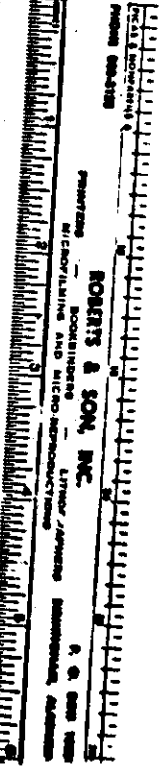
WILSPERNS PINE SUBMISSION



STATE OF ALABAMA
 COUNTY OF ETOWAH
 I, EDWIN L. EDWARDS, Notary Public in and for the State of Alabama, County of Etowah, do hereby certify that the foregoing is a true and correct copy of the original map or plat of the lands herein shown, as shown to me by the owner of the same, and that the same has been duly recorded in my office on the 28th day of May, 1974, at 11:14 AM.

APPROVED: *[Signature]*
 EDWIN L. EDWARDS
 Notary Public in and for the State of Alabama, County of Etowah

NOTARY PUBLIC
 EDWIN L. EDWARDS
 REG. #3222



*Replication and Adoption of Plat
 See pages 84 page 11*