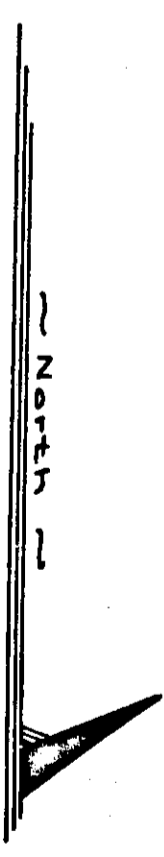
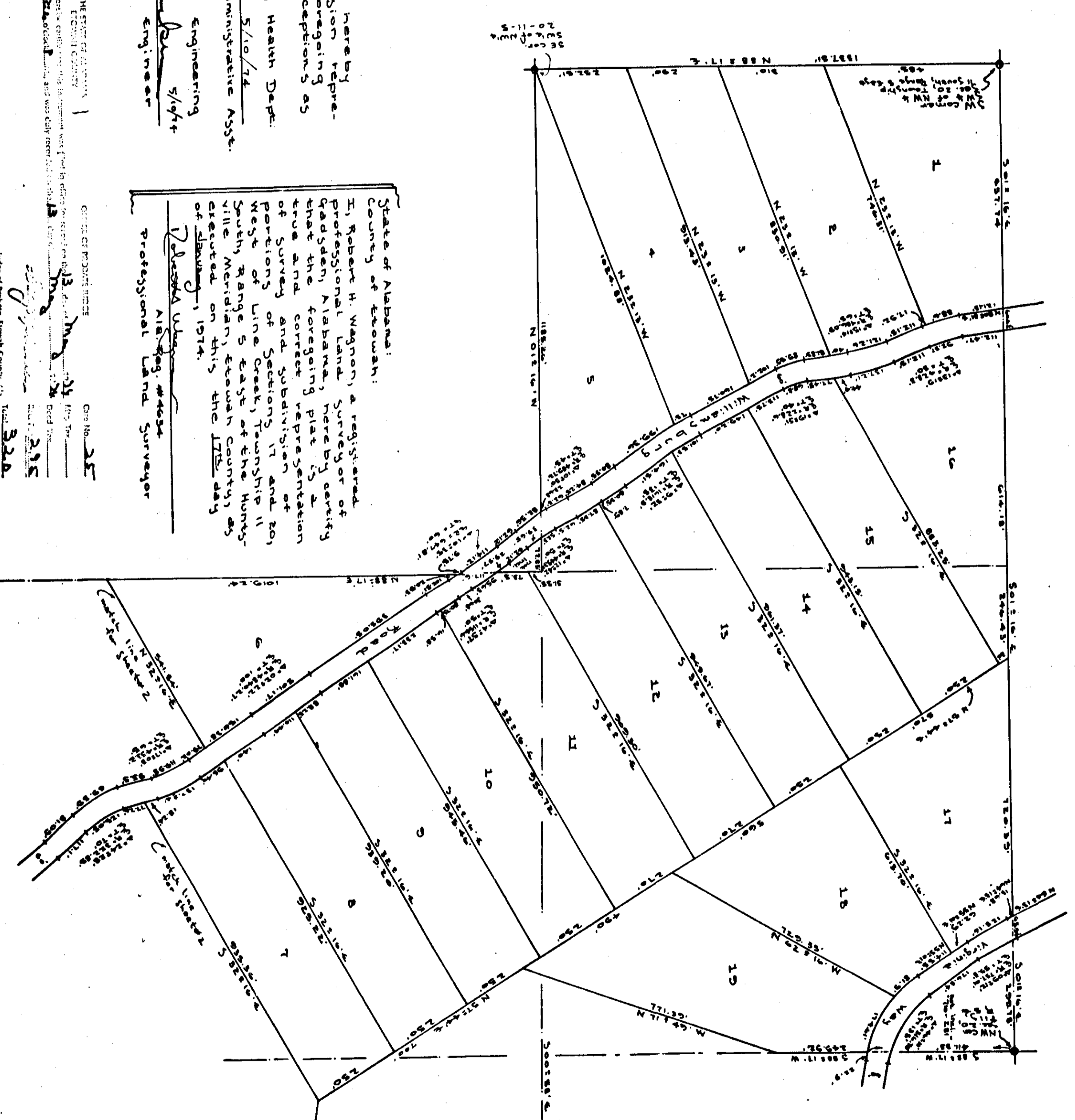


# WILLIAMSBURG ESTATES



Part Book I  
Page 30



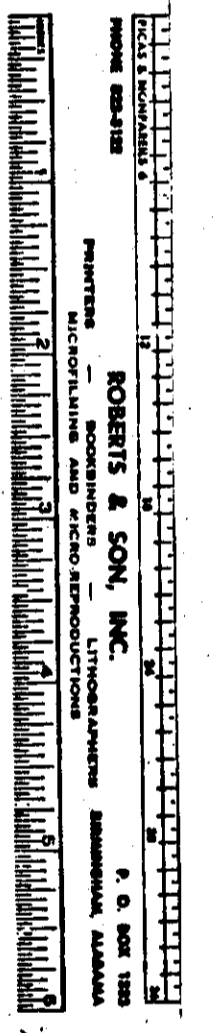
State of Alabama:  
County of Etowah:  
We, the undersigned, hereby approve the subdivision represented by the foregoing plat, with the exceptions as noted, if any:  
for: Etowah County Health Dept.  
*Walter R. Savage* 5/16/74  
Health Officer, Administrative Ass't.

State of Alabama:  
County of Etowah:  
I, Robert H. Wagoner, a registered Professional Land Surveyor of Etowah County, Alabama, hereby certify that the foregoing plat is a true and correct representation of a survey and subdivision of property and subdivision and so forth, and that I am a duly licensed Professional Land Surveyor of Etowah County, Alabama, as evidenced on this the 17th day of January, 1974.  
*Robert H. Wagoner*  
Professional Land Surveyor

THE STATE OF ALABAMA  
COUNTY OF ETOWAH  
I, *Walter R. Savage*, do hereby certify that the foregoing plat is a true and correct representation of a survey and subdivision of property and subdivision and so forth, and that I am a duly licensed Professional Land Surveyor of Etowah County, Alabama, as evidenced on this the 17th day of January, 1974.  
Walter R. Savage  
Professional Land Surveyor

Arrouthead Associates  
Surveyors & Land Planning  
416 South Third Street  
Gadsden, Alabama  
35901

Sheet 1 of 2



ROBERTS & SON, INC.  
SURVEYORS & LAND PLANNERS  
1000 W. UNIVERSITY BLVD., SUITE 100  
MONTGOMERY, ALABAMA 36102  
PH. 265-1111