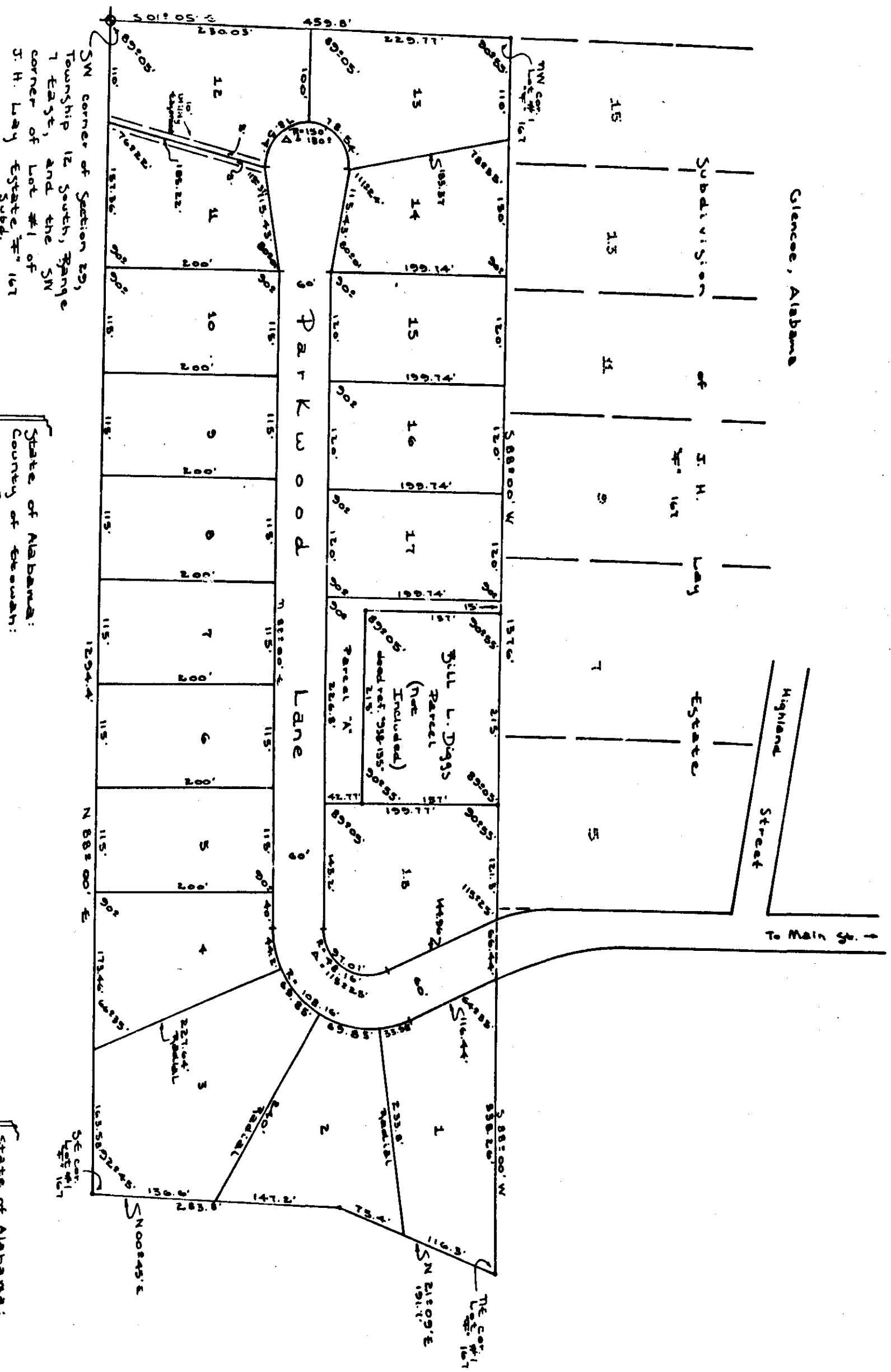


# PARKWOOD HIGHLANDS

Plot Book 1  
page 29



State of Alabama:  
County of Etowah:

Way, the undersigned, S. S. Parker and wife, Ima B. Parker, and Billy G. Woodward and wife, Dorothy F. Woodward, being the owners of the lands embraced within the foregoing plat, do hereby certify, confirm and assent to the same as being true and correct.

This the 31st day of May 1914.

*I. H. Lay*  
S. S. Parker  
Ima B. Parker  
Billy G. Woodward  
Dorothy F. Woodward

Date: 1-1-1901 '13  
Survey # 14607310  
Drawn by: RCM

State of Alabama:  
County of Etowah:

I, Ray G. Giddens, a notary public in & for the county of Etowah, hereby certify that S. S. Parker and wife, Ima B. Parker, Billy G. Woodward and wife, Dorothy F. Woodward, who names are signed to the foregoing plat, and who are known to me, appeared before me on this day, that being the 31st day of the month of May, 1914, they executed the same voluntarily on the day the same bears date. Witness my hand and seal, this the 31st day of May 1914.

*Ray G. Giddens*  
Notary Public

State of Alabama:  
County of Etowah:

I, Robert W. Mayhew, a registered professional land surveyor in the State of Alabama, hereby certify that the foregoing plat, and the correct representation of the same, as shown on the plat, is a true and correct representation of the land shown thereon, and that the same has been recorded in the Public Office, Etowah County, Alabama, as required on this the 22nd day of November, 1913.

*Robert W. Mayhew*  
Professional Land Surveyor

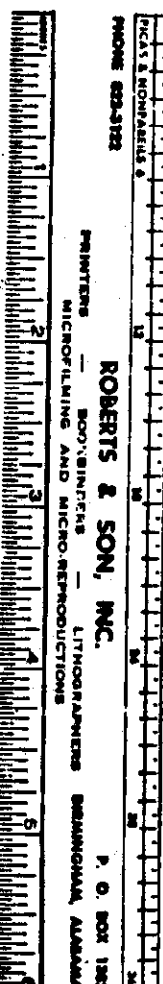
State of Alabama:  
County of Etowah:

I, the undersigned, hereby approve the subdivision represented by the foregoing plat, with the alterations as needed, if any.

for: Etowah County Health Department  
*W. H. Huggins* 5/10/14  
Health Officer

for: Etowah County Engineering Department  
*Samuel D. Tucker* 5/10/14  
Bennett Tucker, County Engineer

Arrowhead Associated  
Surveyors and Land Planning  
Consultants  
412 South Third Street  
Gadsden, Alabama 35901



ROBERTS & SON, INC.  
LITHOGRAPHERS  
BIRMINGHAM, ALABAMA