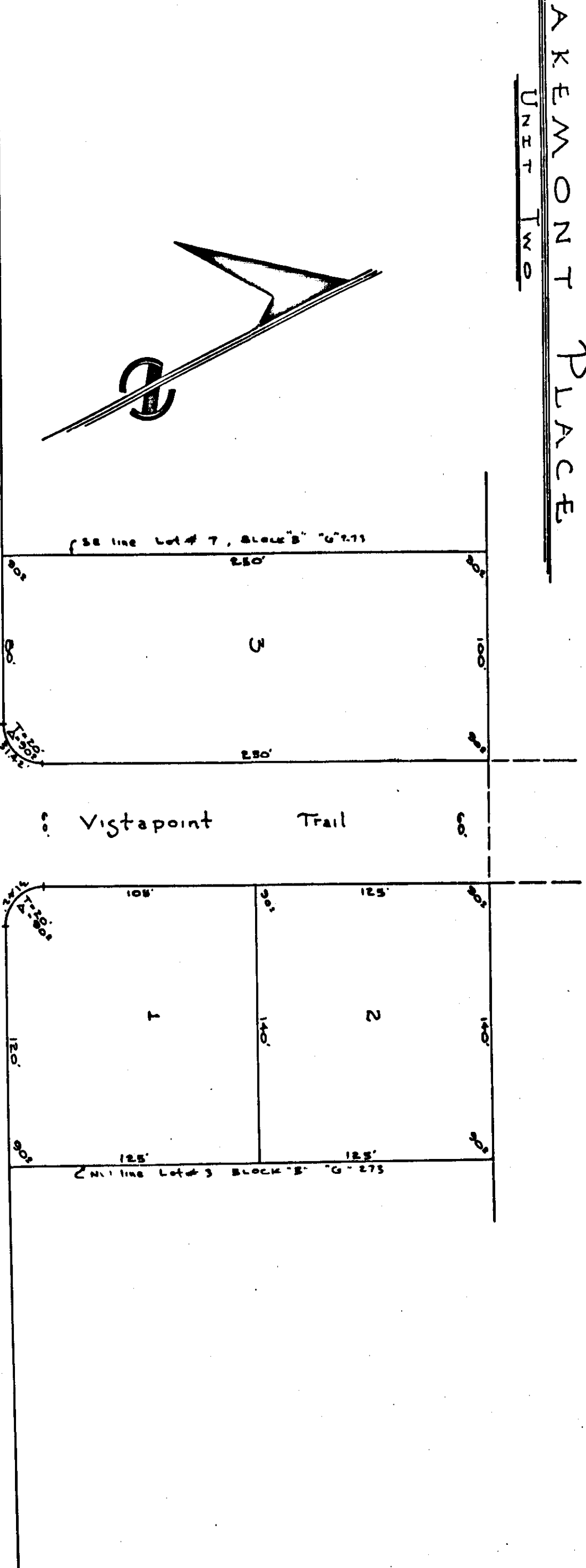


LAKEMONT PLACE  
UNIT TWO

Plot Book  
Page 28



State of Alabama:  
County of Etowah:

The undersigned, Green Valley Lake Sports, Incorporated, a corporation, as owner of the lands described herein, hereby certifies that the plat hereon shown is a true and correct representation of the lands described herein, and that the same have been surveyed and laid out in accordance with the laws of the State of Alabama, and that the same are being filed for record on this day of December, 1973.

This the 10th day of December, 1973.  
Green Valley Lake Sports, Incorporated  
By: *Richard H. Giddley*  
Raymond Kitchens, Register

Vista Point 50'

LAKEMONT

DRIVE

Vistapoint Trail

State of Alabama:  
County of Etowah:

In the year 1973, I, Robert H. Wagner, a registered professional land surveyor of Etowah County, Alabama, hereby certify that the foregoing plat is a true and correct representation of the lands described herein, and that the same have been surveyed and laid out in accordance with the laws of the State of Alabama, and that the same are being filed for record on this day of December, 1973.

This the 10th day of December, 1973.  
Robert H. Wagner  
Professional Land Surveyor

*Paul Miller*  
Paul Miller  
Raymond Kitchens, Register

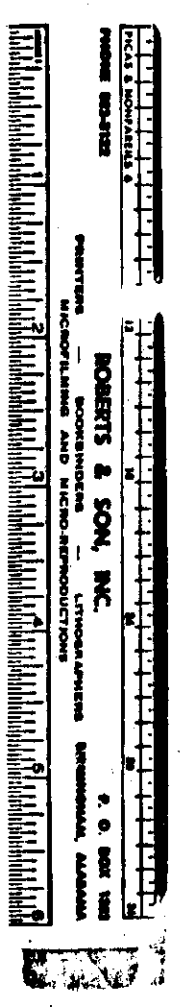
Survey station  
shown on  
plat by  
p. 28

Arrowhead Associates  
Surveying & Land Planning Engineers  
416 South Third Street  
Gadsden, Alabama 35901

State of Alabama:  
County of Etowah:

I, the undersigned, hereby approve the subdivision represented by the foregoing plat, with the exceptions as noted, if any.  
Etowah County Health Department  
William R. Sledge, Administrator  
Norton W. Sledge, Administrative Assistant  
For: Etowah County Engineering Department  
By: *Richard H. Giddley*  
Sergeant Tatum, County Engineer

THE STATE OF ALABAMA  
OFFICE OF THE REGISTER  
Raymond Kitchens, Register  
1111 North 11th Street  
Montgomery, Alabama 36103  
Phone: (205) 261-2444



ROBERTS & SON, INC.  
P. O. BOX 100  
MONTGOMERY, ALABAMA 36102