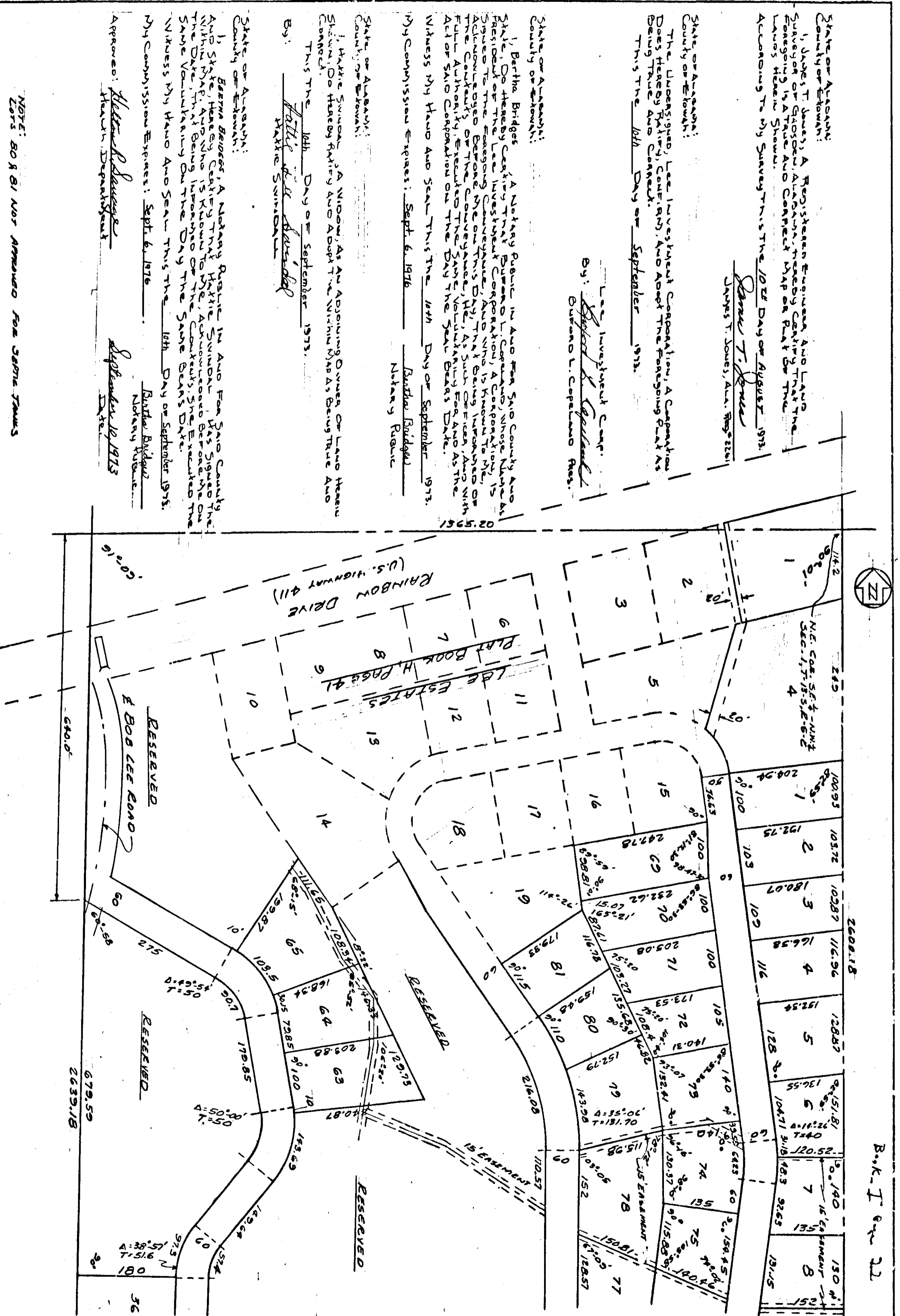


RESTRICTIONS - Misc. 81 Page 2 81



LEE ESTATES, ADDITION NO. 1

THE STATE OF ALABAMA
 COUNTY OF ETOWAH
 I, Notary Public, do hereby certify that the foregoing is a true and correct copy of the original as the same appears in my records.
 My Commission Expires: Sept. 6, 1976
 Notary Public
 Etowah County, Alabama

APPROVED: Robert S. Son, Inc.
 5-2583 72-8-57
 SWEET 1002

NOTE: 80 & 81 NOT APPROVED FOR SEPT. TAXES