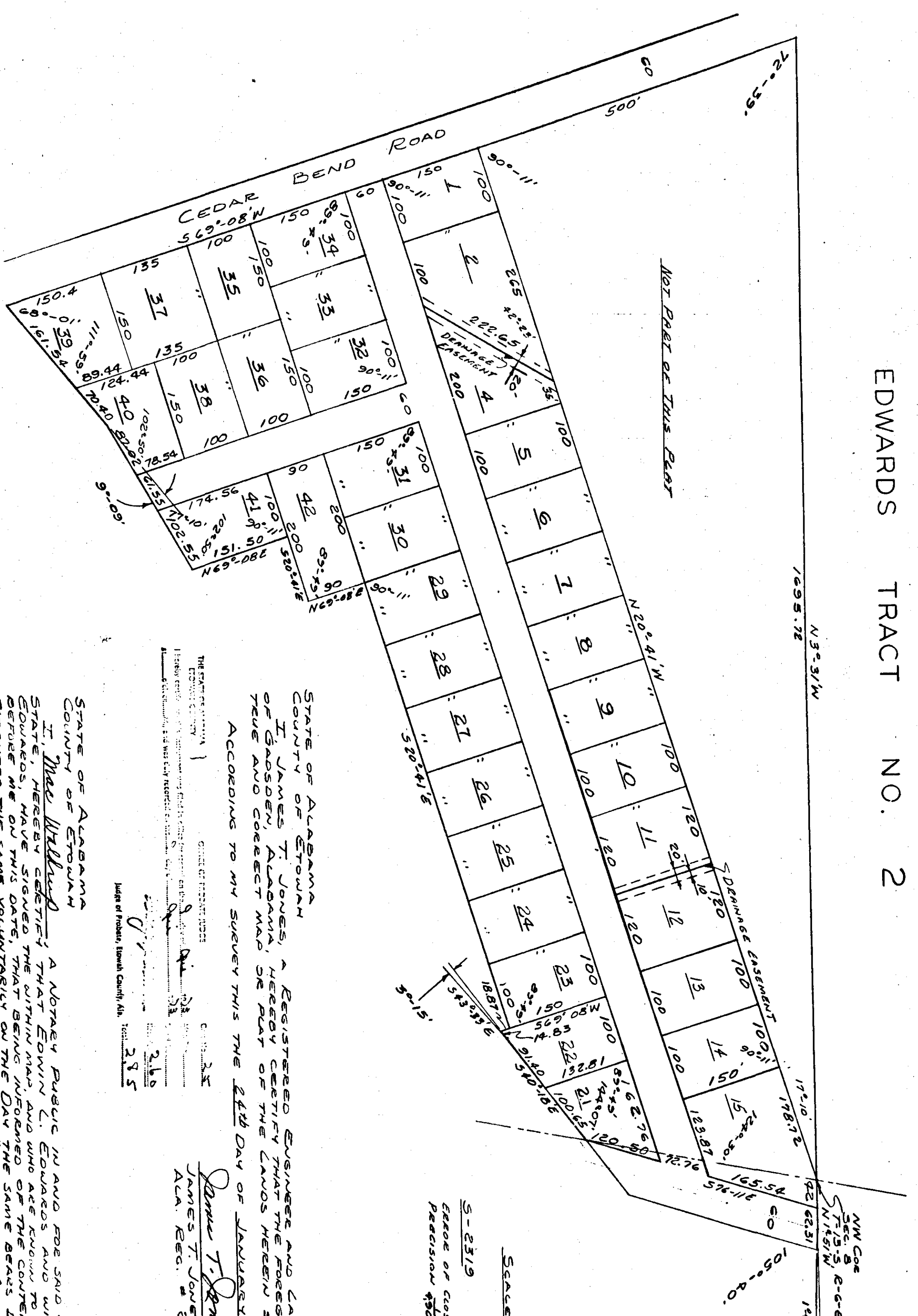


EDWARDS TRACT NO. 2

Book I. Page 8



SCALE: 1"=100'
 5-2319
 DATE OF COURSE 092
 PRECISION 4508

STATE OF ALABAMA
 COUNTY OF STOWAN
 I, James T. Jones, a Registered Engineer and Land Surveyor of Stowan Alabama, hereby certify that the foregoing is a true and correct map or plat of the lands herein shown.
 ACCORDING TO MY SURVEY THIS THE 24th DAY OF JANUARY, 1973.
 JAMES T. JONES
 ALA. REG. # 2261

STATE OF ALABAMA
 COUNTY OF STOWAN
 WE, EDWIN L. EDWARDS AND WIFE ANN S. EDWARDS, AS GRANTEES OF THE LANDS HEREIN SHOWN, DO HEREBY RATIFY AND ADOPT THE WITHIN MAP AS BEING TRUE AND CORRECT.
 THIS THE 2nd DAY OF APRIL, 1973.

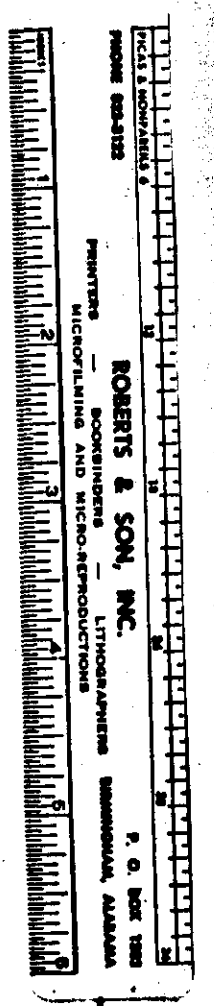
My Commission Expires 3/17/76

True Witness
 Notary Public

Robert H. Hui
 78-483

Edwin L. Edwards
 Ann S. Edwards

Approved: Walter Sledge
 HEALTH DEPARTMENT
 April 9, 1973
 DATE



5-2319