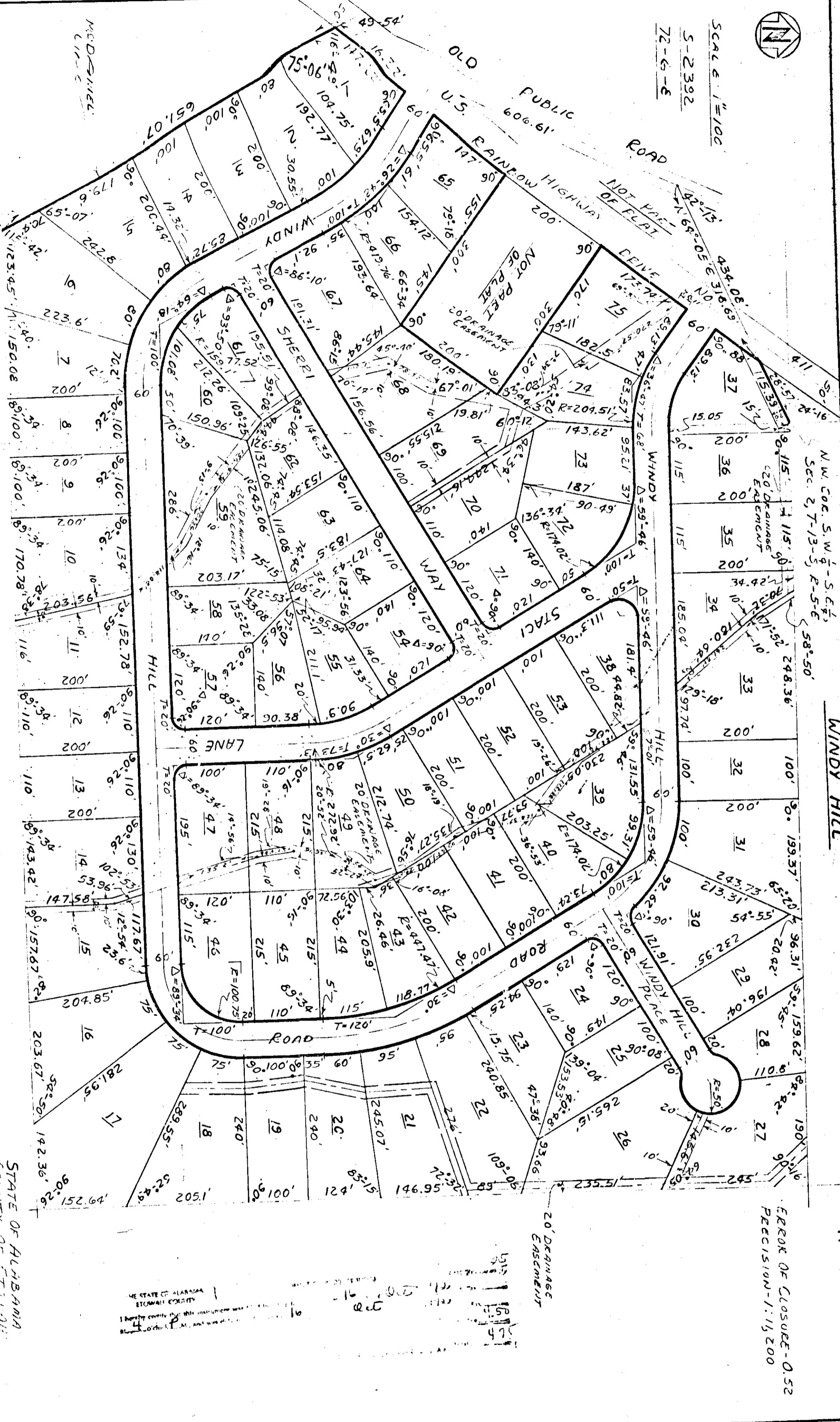




SCALE 1"=100'

S-2392
72-6-6



Plat for Windy Hill Road
H-135

FEED OF CLOSURE-0.52
PRECISION-1/10,000

STATE OF ALABAMA
COUNTY OF ETOWAH
I, CHARLES T. JONES, A REGISTERED ENGINEER AND
LAND SURVEYOR OF ALABAMA, HEREBY
CERTIFY THAT THE FOREGOING IS A TRUE AND
CORRECT MAP OR PART OF THE LANDS HEREIN
SHOWN.

APPROVED: *[Signature]*
JAMES T. JONES
R.M. Reg. #2261

HEALTH DEPARTMENT
ETOWAH COUNTY

APPROVED: *[Signature]*
COUNTY ENGINEER
COUNTY OF ETOWAH

STATE OF ALABAMA
COUNTY OF ETOWAH
WE, FRED FITTS JR. AND WIFE GAUL C. FITTS, J. P. KING III AND WIFE
SHIRLEY F. KING, EDWIN C. EDWARDS AND WIFE ANN G. EDWARDS, AND
BILLY W. ROGERS AND WIFE BETTY R. ROGERS, DO HEREBY CERTIFY AND ADOPT THE WITHIN MAP AS
BEING TRUE AND CORRECT
THIS THE 15TH DAY OF OCT., 1972.

STATE OF ALABAMA
COUNTY OF ETOWAH
I, PRISCILLA COLE, Notary
Public in and for the said County
and State, do hereby certify that
the within map was duly recorded
for J. P. KING III, SHIRLEY F. KING,
EDWIN C. EDWARDS, ANN G. EDWARDS,
BILLY W. ROGERS, and BETTY R. ROGERS
AND I HEREBY CERTIFY THAT THE
WITHIN MAP, AND THE WITNESSES
TO THE SAME, HAVE SIGNED THE
SAME IN THE PRESENCE OF ME
AND THAT THEY HAVE DECLARED
TO ME THAT THEY ARE THE
SAME PERSONS WHOSE NAMES
ARE SET FORTH IN THE
WITHIN MAP, AND THAT THEY
WITNESS MY HAND AND SEAL THIS
THE 15TH DAY OF OCT., 1972.

ROBERTS & SON, INC.
PLAT ENGINEERS
1000 1/2 AVENUE
N.W. ALBUQUERQUE, N.M. 87102

