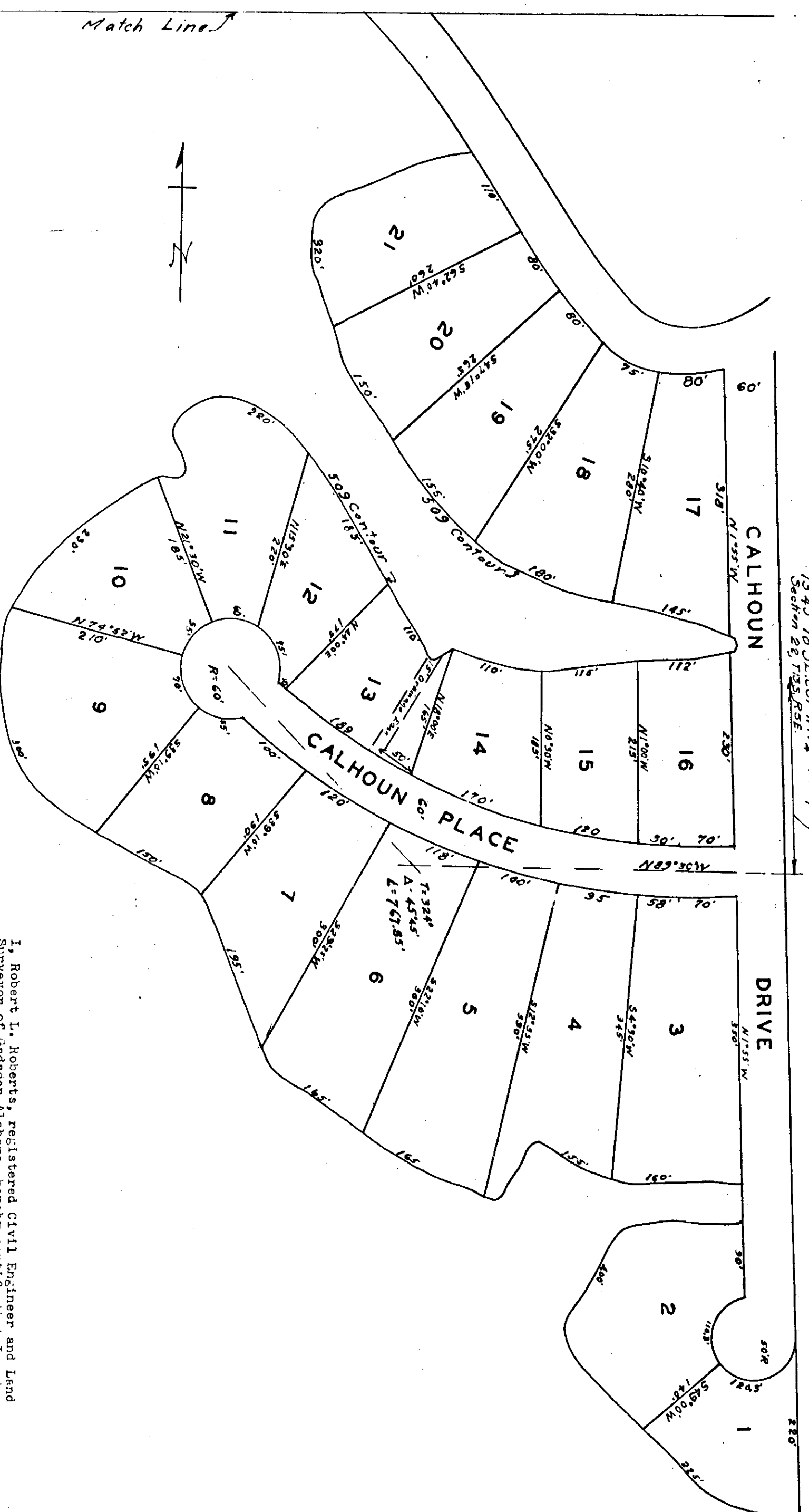


H-133

CALHOUN ESTATES

SHEET NO 2



State of Alabama
County of Etowah

The undersigned, T. J. Calhoun being Administrator for the estate of T. J. Calhoun, deceased, hereby certifies that the above and foregoing plat, map and subdivision, was lawfully made and is correct, true and correct.

This the 13th day of October 1972.

T. J. Calhoun

State of Alabama
County of Etowah

I, T. J. Calhoun, a Notary Public in and for said county in said state, hereby certify that, T. J. Calhoun as administrator of said lands whose name is known to me, or the contents of said map or plat, were informed voluntarily on the day the same bears date.

Given under my hand and notary seal, this the 13th day of October 1972.

T. J. Calhoun
Notary Public

I, Robert L. Roberts, registered Civil Engineer and Land Surveyor of Etowah County, Alabama, hereby certify that I made a survey of the lands within the foregoing plat, said lands being portions of the west 1/4 of Section 22 and of the east 1/4 of Section 23 of the Huntsville Meridian, Etowah County, Alabama and that the same are true and correct representation of said survey, this the 13th day of October, 1972.

Scale 1" = 100'

Robert L. Roberts
Reg. #3307

State of Alabama
County of Etowah

We, the undersigned, hereby approve the subdivision as noted by the foregoing plat, with the exceptions as noted, if any.

For the Etowah County Health Department

Date

Walter B. Savage

For the Etowah County Engineering Department

Date

Robert L. Roberts

10

11

12 Oct 72

25
366
385

