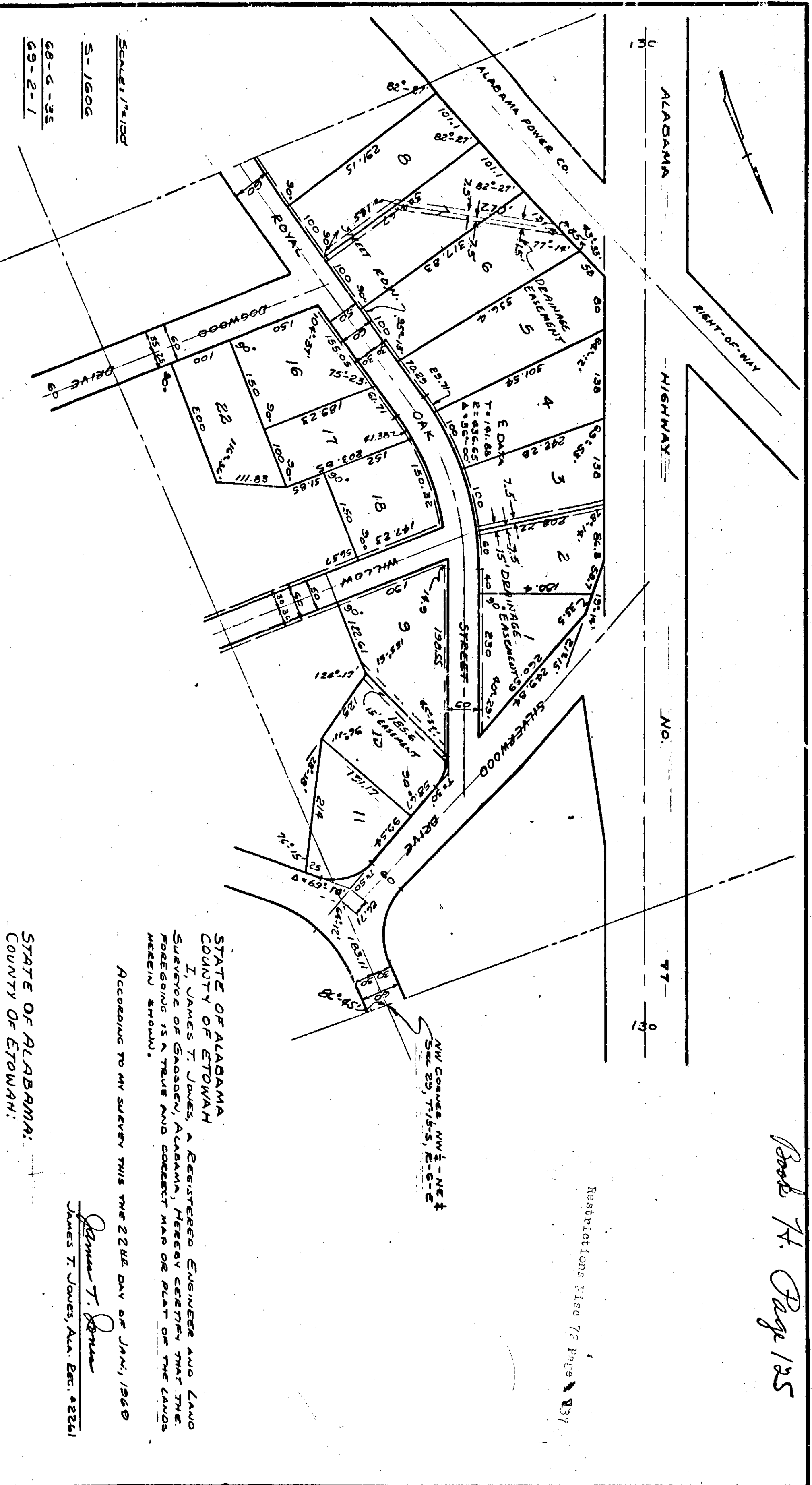


Book 74 Page 135



### OAKLAND HEIGHTS

SCALE: 1/2"=100'  
 S-1606  
 68-6-35  
 69-2-1

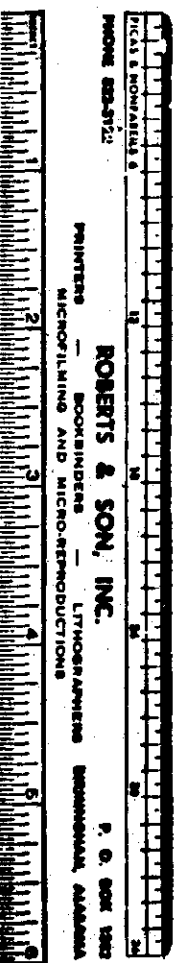
STATE OF ALABAMA  
COUNTY OF ETOWAH:

I, Mac Wellcamp Notary Public in and for said County and State, hereby certify that Thomas P. Memmeskin and wife Harelett Ann Memmeskin, T. W. Memmeskin, Jr. and wife Louise C. Memmeskin, and Lloyd Lee Christopher and wife Iris Memmeskin have signed the within map and who are known to me as the owners of the lands therein shown, do hereby ratify and adopt the within map as being true and correct, they executed the same voluntarily on the day the same bears date.

WITNESS MY HAND AND SEAL THIS THE 25th Day of July, 1972.

Mac Wellcamp  
Notary Public for Alabama

MY COMMISSION EXPIRES Sept. 1972



ROBERTS & SON, INC.  
 SURVEYORS  
 1100 1/2 N. 9th St.  
 Birmingham, Alabama

STATE OF ALABAMA  
 COUNTY OF ETOWAH  
 I, James T. Jones, a Registered Engineer and Land Surveyor of Alabama, Alabama, hereby certify that the foregoing is true and correct map of the lands herein shown.

According to my survey this the 22nd day of July, 1972  
James T. Jones  
 James T. Jones, Ala. Eng. #2261

STATE OF ALABAMA:  
COUNTY OF ETOWAH:

WE, THOMAS P. MEMMESKIN AND WIFE HARELETT ANN MEMMESKIN, T. W. MEMMESKIN, JR. AND WIFE LOUISE C. MEMMESKIN, AND LLOYD LEE CHRISTOPHER AND WIFE IRIS LEE CHRISTOPHER, AS OWNERS OF THE LANDS HEREIN SHOWN, DO HEREBY RATIFY AND ADOPT THE WITHIN MAP AS BEING TRUE AND CORRECT  
 THIS THE 25th Day of July, 1972.

By: Thomas P. Memmeskin      By: Thomas P. Memmeskin  
Harelett Ann Memmeskin      Thomas P. Memmeskin  
 By: Lloyd Lee Christopher      By: Lloyd Lee Christopher  
Louise C. Memmeskin      Louise C. Memmeskin  
 By: Iris Lee Christopher      By: Iris Lee Christopher  
Iris Lee Christopher      Lloyd Lee Christopher

Witness my hand and seal this the 26th day of July, 1972.  
Walter R. Slaughter  
 Notary Public for Alabama  
 My Commission Expires 7/26/73  
 Date

S-1606