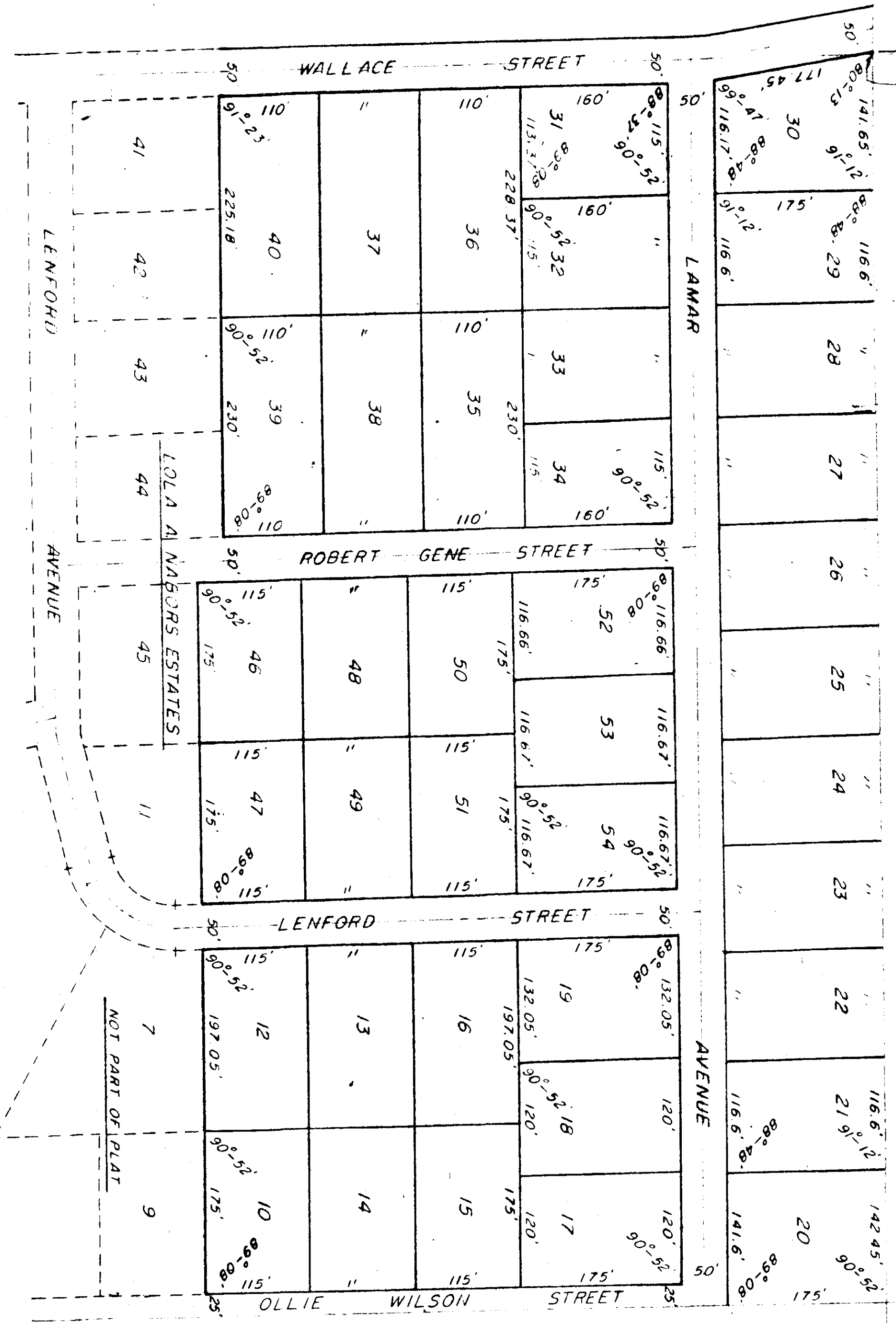




S W COR N W 4 - N E 4,  
SEC 31, T-12-S, R-7-E

FIRST ADDITION  
TO  
LOLA A NABORS ESTATES



5-1847

SCALE 1"=100'

70-1-5  
70-1-36

SUBJECT TO RESTRICTIONS, RESEVENTH AND CREDITORS SET OUT IN INSTRUMENT DATED OCTOBER 15, 1970 AND RECORDED IN MISCELLANEOUS, REGISTER 66, PAGE 253 IN THE PRIVATE OFFICE OF ETOWAH COUNTY, ALABAMA

THE STATE OF ALABAMA  
ETOWAH COUNTY  
NOTARY PUBLIC  
I, John H. ...  
Notary Public, Etowah County, Ala.  
1970

STATE OF ALABAMA,  
COUNTY OF ETOWAH:

I, John H. ..., A NOTARY PUBLIC IN AND FOR SAID COUNTY AND STATE, HEREBY CERTIFY THAT LOLA A. NABORS, A WIDOW, JOE F. NABORS AND WIFE MARTHA S. NABORS HAVE SIGNED THE WITHIN MAP, AND WHO ARE KNOWN TO ME, ACKNOWLEDGED BEFORE ME ON THIS DATE, THAT BEING INFORMED OF THE CONTENTS, THEY EXECUTED THE SAME VOLUNTARILY ON THE DAY THE SAME BEARS DATE

WITNESS MY HAND AND SEAL THIS THE 15<sup>TH</sup> DAY OF OCTOBER, 1970

John H. ...  
NOTARY PUBLIC

MY COMMISSION EXPIRES 2-27-71  
DATE

STATE OF ALABAMA,  
COUNTY OF ETOWAH:

WE, LOLA A. NABORS, A WIDOW, JOE F. NABORS AND WIFE MARTHA S. NABORS, AS OWNERS OF THE LANDS HEREIN SHOWN, DO HEREBY RATIFY AND ADOPT THE WITHIN MAP AS BEING TRUE AND CORRECT.

THIS THE 15<sup>TH</sup> DAY OF OCTOBER, 1970.

BY: John H. ...  
LOLA A. NABORS  
BY: Joe F. Nabors  
JOE F. NABORS  
BY: Martha S. Nabors  
MARTHA S. NABORS

STATE OF ALABAMA,  
COUNTY OF ETOWAH:

I, Doyle W. Blair, A REGISTERED ENGINEER AND LAND SURVEYOR OF GADSDEN, ALABAMA, HEREBY CERTIFY THAT THE FOREGOING IS A TRUE AND CORRECT MAP OR PLAT OF THE LANDS HEREIN SHOWN.

ACCORDING TO MY SURVEY THIS THE 15<sup>TH</sup> DAY OF OCTOBER, 1970.

Doyle W. Blair  
DOYLE W. BLAIR, ALA REG. #4796

APPROVED: John H. ...  
HEALTH DEPARTMENT

John H. ...  
DATE